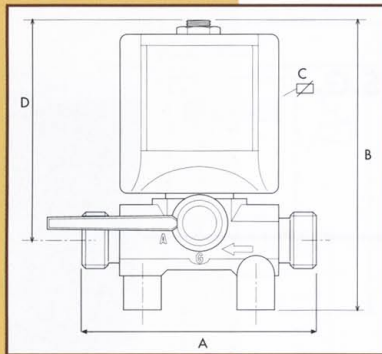


# FLUID CONTROL COMPONENTS

## CARATTERISTICHE SPECIFICATIONS

ATTACCHI PIPES in → out	Ø mm	CODICE CODE	KV m <sup>3</sup> /h	M.O.P.D. bar		DIMENSIONI/DIMENSIONS mm				PESO/WEIGHT Kg
				AC	DC	A •	B •	C •	D •	
1/2"	5,7	EL05X1	0.415	2.5	1.5	56	83.5	65	62.5	0.500
1/2"	10	EL05X6	0.800	1.5	1	56	97	67	76	0.570
1"	19	EL10X3	8.400	5	4	100	190	105	170	3.000



## CARATTERISTICHE ELETTRICHE ELECTRICAL INFORMATION

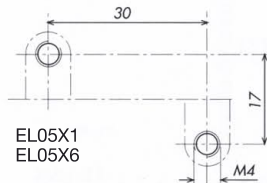
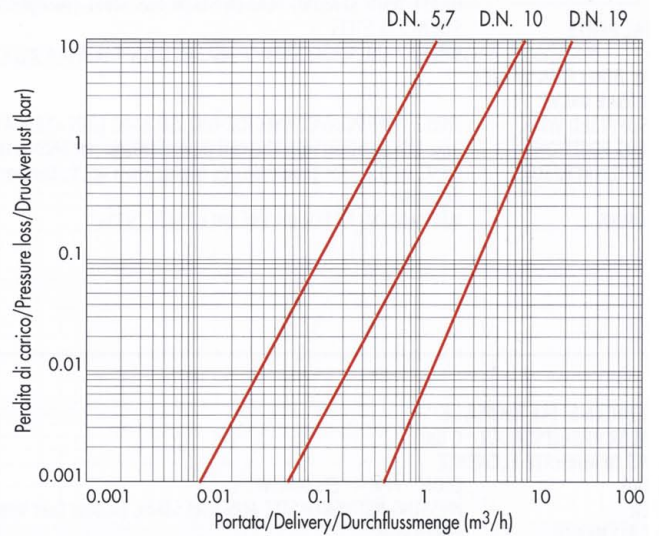
			POTENZA/POWER					
			EL05X1		EL10X3		EL05X6	
			NOMINALE HOLDING	SPUNTO IN RUSH	NOMINALE HOLDING	SPUNTO IN RUSH	NOMINALE HOLDING	SPUNTO IN RUSH
V~	12 24 48 110 230 400	50 60 Hz	27VA	38VA	140VA	430VA	18,5VA	32VA
V=	12 24 48 110		14W		43W		14W	

Per dettagli costruttivi sulle bobine vedi capitolo "INFORMAZIONI DI PROGETTO"  
For construction details of the coils see chapter "PROJECT INFORMATION"  
Ausführliche Daten über die Ventilspulen finden Sie unter Abschnitt "TECHNISCHE INFORMATIONEN"

## MAX TEMPERATURA MAX TEMPERATURE

FLUIDI/FLUIDS		AMBIENTE/AMBIENT	
FPM		80°C	
150°C			

## DIAGRAMMA PERDITA DI CARICO PRESSURE LOSS DIAGRAM



EL05X1  
EL05X6

## EL05X1 - EL05X6

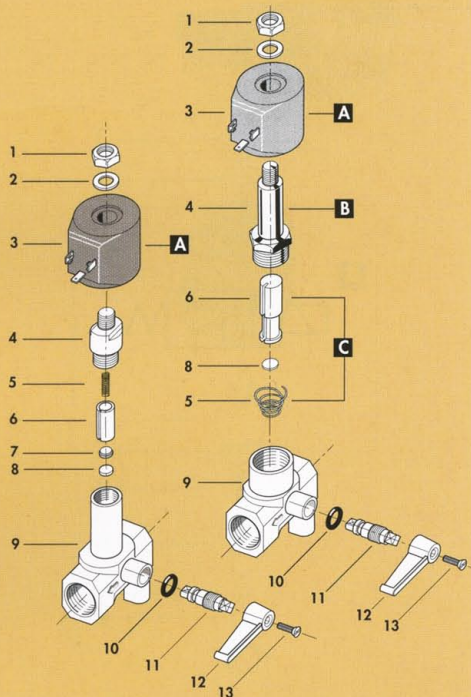


## EL10X3



## EL05X1

## EL05X6



## EL05X1 - EL05X6

1 Dado	Lock nut	Mutter
2 Rondella	Washer	Beilagscheibe
3 Bobina	Coil	Magnetspule
4 Nucleo fisso	Tube top	Kern
5 Molla	Spring	Feder
6 Nucleo mobile	Plunger	Plunger
7 Piattello	Support	Scheibe
8 Pastiglia	Seal	Dichtung
9 Corpo	Valve body base	Grundkörper
10 O-ring	O-ring	O-ring
11 Perno di regolazione	Regulation bolt	Einstellungsbolzen
12 Manopola	Knob	Handrad
13 Vite	Screw	Schraube

RICAMBI	SPARE PARTS	ERSATZTEILE
<b>A</b> Bobina	Coil	Magnetspule
<b>B</b> Cannotto	Tube guide	Plungerrohr
<b>C</b> Nucleo mobile	Plunger	Plunger

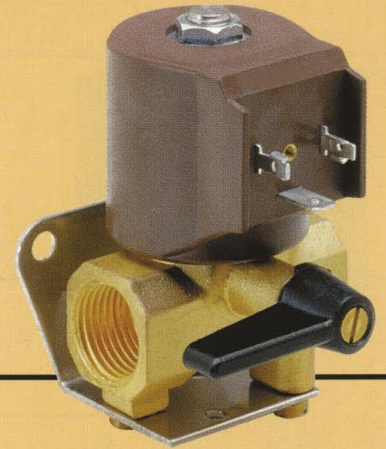
## EL10X3

RICAMBI	SPARE PARTS	ERSATZTEILE
Rivolgersi al nostro SERVIZIO TECNICO	Please contact our TECHNICAL SERVICE	Bitte wenden Sie sich an unsere TECHNISCHE DIENSTABTEILUNG

## ELETTOVALVOLA COMANDO MANUALE AZIONE DIRETTA 2/2 VIE N.C.

## SOLENOID VALVE MANUAL OVERRIDE DIRECT ACTING 2/2 WAY N.C.

## ELEKTROMAGNETISCHES BZW. HANDBETAETIGTES DIREKTGESTEUERTES MAGNETVENTIL 2/2 WEGE S.G.



I

### CARATTERISTICHE GENERALI

PRESSIONE MINIMA DI FUNZIONAMENTO 0 bar

PARTI A CONTATTO CON IL FLUIDO

TENUTA FPM  
CORPO OTTONE  
ORGANI INTERNI OTTONE NICHELATO (EL10X3)  
FLUIDI ACCIAIO INOX  
VALVOLA UNIDIREZIONALE GASOLIO, ACQUA, OLII LEGGERI  
VALVOLA ISPEZIONABILE  
COMANDO MANUALE DI APERTURA/CHIUSURA

VALVOLA FORNITA CON

CONNETTORE TRIPOLARE UNI ISO 4400 (DIN 43650A) -IP65 (EL05X1-EL05X6-EL10X3)  
STAFFA E VITE DI FISSAGGIO (EL05X1-EL05X6)

POSIZIONE DI MONTAGGIO Qualsiasi; sconsigliata quella con bobina rivolta verso il basso

TEMPERATURA AMBIENTE 80°C, in D.C. per temperature superiori a 40°C, le performance (M.O.P.D.) potrebbero diminuire

GB

### GENERAL FEATURES

MINIMUM WORKING PRESSURE 0 bar

PARTS IN CONTACT WITH THE FLUID:

SEALING FPM  
BODY BRASS  
INTERNAL PARTS NICKEL-PLATED BRASS (EL10X3)  
FLUIDS STAINLESS STEEL  
ONE WAY DIRECTION VALVE DIESEL OIL, WATER, LIGHT OILS  
SERVICEABLE VALVE  
MANUAL CONTROL FOR OPENING/CLOSING

VALVE SUPPLIED WITH

- THREE POLE PLUG CONNECTOR UNI ISO 4400 (DIN 43650A) -IP65 (EL05X1-EL05X6-EL10X3)  
SCREW AND MOUNTING BRACKET(EL05X1-EL05X6)

MOUNTING POSITION Any, the position with the coil downwards is not recommended.

AMBIENT TEMPERATURE 80°C, in D.C. for temperatures higher than 40°C, the performances (M.O.P.D.) could decrease.

D

### ALLGEMEINE MERKMALE

MINIMALER ARBEITSDRUCK 0 bar

MEDIUMS BERUEHRTE ELEMENTE

DICHTUNG FPM  
KOERPER MESSING  
INNERE ELEMENTE VERNICKELTES MESSING (EL10X3)  
MEDIEN EDELSTAHL  
UNIDIREKTIONALES VENTIL DIESEL OEL, WASSER, LEICHTE OEL  
VENTIL WARTUNGSFREUNDLICH  
STELLMAN ZUR MANUELLEN BETAETIGUNG

LIEFERUMFANG

DREIPOLIGER STECKER UNI ISO 4400 (DIN 43650A) -IP65 (EL05X1-EL05X6-EL10X3)  
SCHRAUBE UND BEFESTIGUNGSBUEGEL (EL05X1-EL05X6)

MONTAGEPOSITION Keine Einschränkungen. Fuer Montage mit dem Spulenkopf senkrecht nach unten, auf Anfrage.

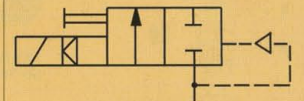
UMGEBUNGSTEMPERATUR 80°C, im D.C-Betrieb koennen Temperaturen ueber 40°C die Schaltkraefte (M.O.P.D.) des Ventils beeintraehtigen.

EL05X1 EL05X6

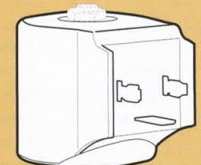


COMANDO MANUALE  
MANUAL OVERRIDE  
MANUELLE BETÄTIGUNG

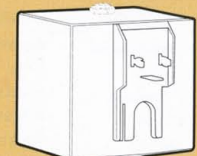
EL10X3



COMANDO MANUALE  
MANUAL OVERRIDE  
MANUELLE BETÄTIGUNG



EL05X1-EL05X6  
BOBINA TIPO B12  
COIL TYPE B12  
SPULE TYP B12



EL10X3  
BOBINA TIPO B60  
COIL TYPE B60  
SPULE TYP B60