

Scan here
to save a copy



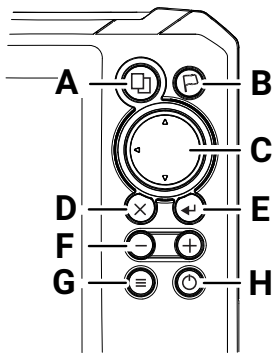
EAGLE® Quick start guide

Lowrance® Eagle® multi-function display (MFD) is available in multiple sizes. This document describes the basic controls of the unit.

For the latest version of this document and the full operator manual, visit: www.lowrance.com/downloads/eagle.

→ **Note:** Refer to the enclosed Installation Manual before you turn on the unit.

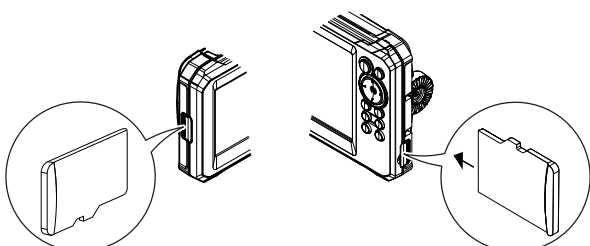
Physical control keys



- A** Pages
 - Press to activate the home screen.
- B** Waypoint
 - Press to open the new waypoint dialog.
 - Press twice to save a waypoint.
 - Press and hold to access the find dialog.
- C** Arrows
 - On full screen pages:
 - Press to position the cursor.
 - Press to pan the image in any direction.
 - On multi-panel pages:
 - Press to select a panel.
 - On menus:
 - Press to navigate.
- D** Exit
 - On a maximized, multi-panel page:
 - Press to return to the multi-panel page.
 - In menus and dialogs:
 - Press to return to the previous menu level and to exit a dialog.
- E** Enter
 - On multi-panel pages:
 - Press to maximize the current selected panel.
 - In menus and dialogs:
 - Press to confirm a selection.
- F** Zoom
 - Press to zoom the image.
 - Press both keys together to create a MOB (Crew Overboard) waypoint at your position.
- G** Menu
 - Press to display the menu on full screen pages.
- H** Power
 - Press once to display the **System Controls** dialog.
 - Press and hold to power the unit on /off.
 - Repeat short presses to cycle the backlight brightness.

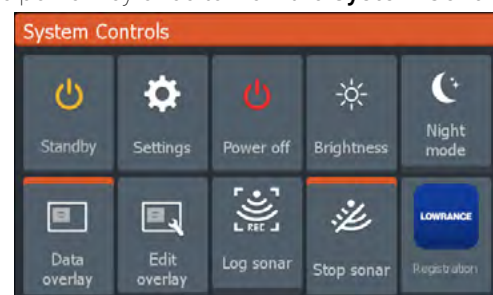
Card reader

Carefully slide a microSD® into the card reader slot on the side of the device. To remove the microSD® card, gently pull the card.



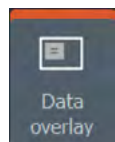
System controls

Press the power key once to view the **System Controls** dialog.

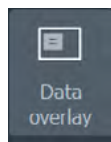


→ **Note:** The content of the **System Controls** dialog depends on connected equipment and the active panel.

Active options are orange in the **System Controls** dialog.



Option ON



Option OFF

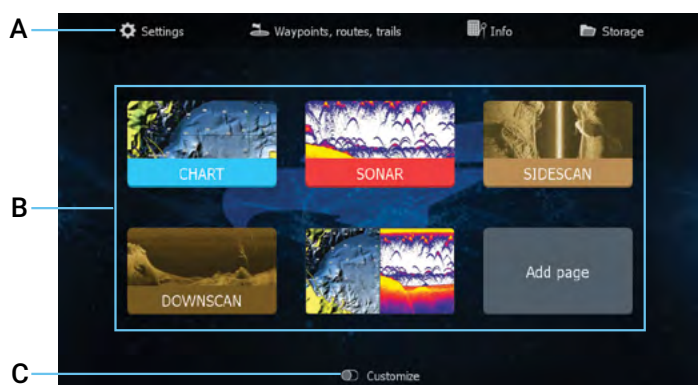
Display illumination

Set brightness and select day/night mode from the **System Controls** dialog.

Cycle backlight brightness levels by repeatedly pressing the power key.

Home screen

Press the pages key to view the home screen.



A Tools — Select to access dialogs used for carrying out a task or for browsing stored information.

B Application icons — Select to display an application.

C Customize — Activate customize mode to modify or delete custom pages.

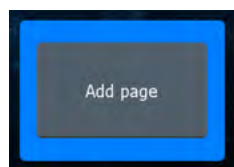
→ **Note:** Application icons on the home screen vary with MFD features.

Pages

You can display an application page by selecting its icon on the home screen.

Custom pages

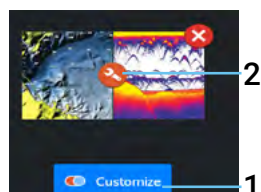
The system is delivered with one predefined custom page, and you can also create your own.



Select the **Add Page** icon to create a custom page.

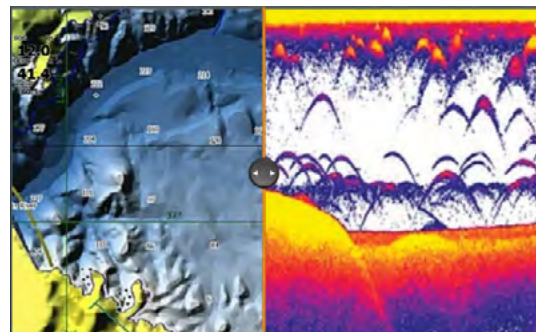
1 Switch ON **Customize** to edit existing custom pages.

2 Select the custom page to edit.



Multi-panel pages

- The active panel is indicated by an orange border.
- Press the arrow keys to change active panels.
- Press the enter key to maximize the active panel. Press the exit key to return to the multi-panel page.
- Select the **Adjust splits** option in the **System Controls** dialog, and use the arrow keys to change the panel size. Confirm the layout by pressing the menu or enter key.

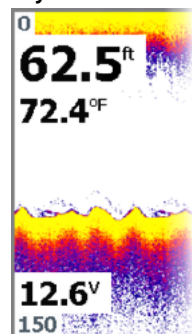
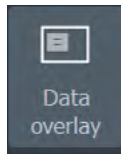


→ **Note:** The panel menu is available on maximized panels.

Data overlay

You can display information as a data overlay on chart and sonar pages. The information is set individually for each default and custom page.

Turn **Data overlay** ON or OFF from the **System Controls** dialog.



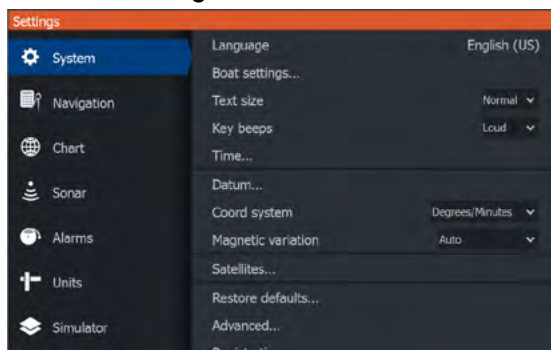
To change the data overlay position or information:

- 1 Select the **Edit overlay** option in the **System Controls** dialog to activate edit mode.
- 2 Press the menu key to display edit options.
- 3 Press the exit key to save your changes.

Settings

There are two ways to view the **Settings** screen:

- Select **Settings** on the **System Controls** dialog, or
- Select **Settings** on the home screen.



Chart

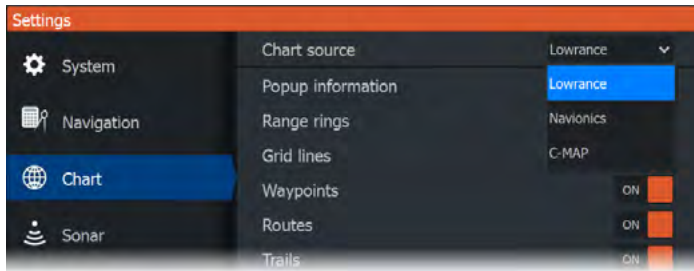
Use the chart page to navigate to a waypoint, create a route, or track your current course.



- Use the zoom and arrow keys to adjust the chart scale and location.
- Position the cursor and press the enter key to select a chart item and activate the detailed information dialog.

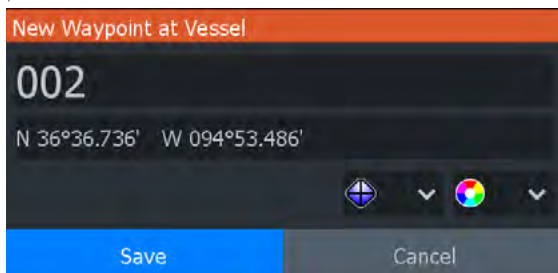
Chart source

Change the chart source if a chart card is inserted.

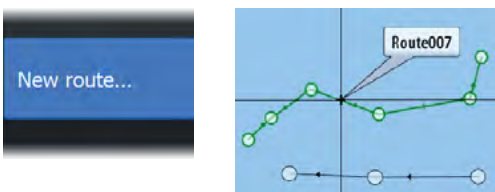


Waypoints

Press the waypoint key to save a waypoint. By default, the waypoint is placed at the vessel's position. With an active cursor, the waypoint is placed at the selected cursor position.



Routes



To create a route:

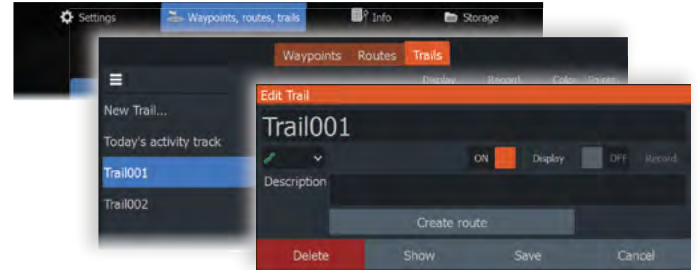
- 1 Activate a full screen chart panel.
- 2 Press the menu key to activate the panel menu, then select the **New route** option in the menu.
- 3 Use the arrow keys to position the first route point, then press the enter key to confirm the position.
- 4 Repeat the previous step to place additional route points.
- 5 Press the exit key to save the route.

Trails

Your unit automatically tracks and draws the vessel's movement on the chart panel. Trails are managed from the **Trails** dialog.

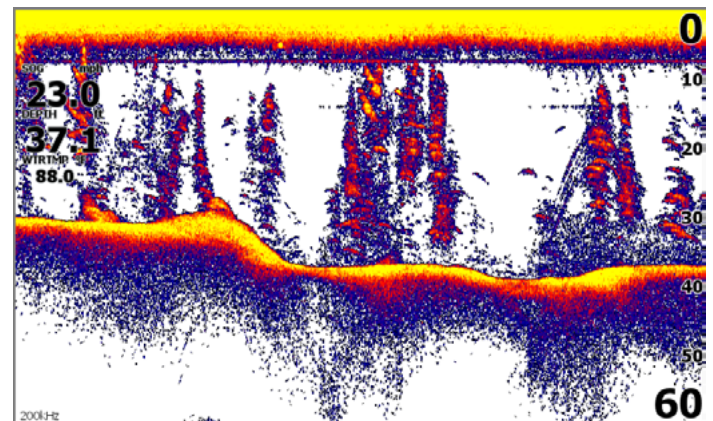
To display the **Trails** dialog:

- 1 Select **Waypoints, Routes, Trails** from the home screen.
- 2 Select the **Trails** tab in the dialog.
- 3 Select the trail you want to edit.



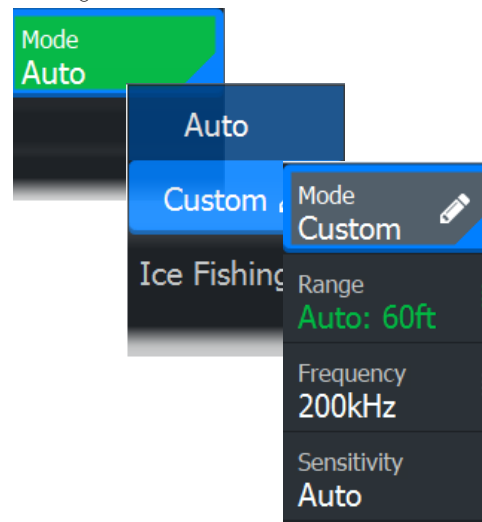
Sonar

The sonar application displays an image of the water and sea floor beneath your vessel, allowing you to detect fish and examine the structure of the seafloor.



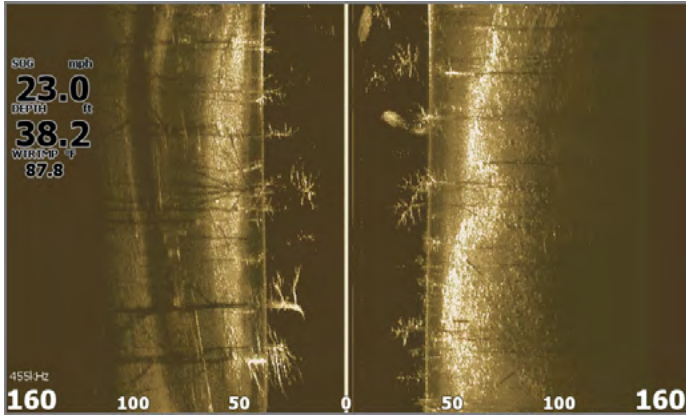
- Use the zoom keys to zoom view different parts of the water column.
- Use the arrow keys to position the cursor and pan the image.

By default, your unit is set to **Auto** mode, and all settings are automated. Select **Auto** in the panel menu and change to **Custom** or **Ice Fishing** mode to customize the sonar settings.



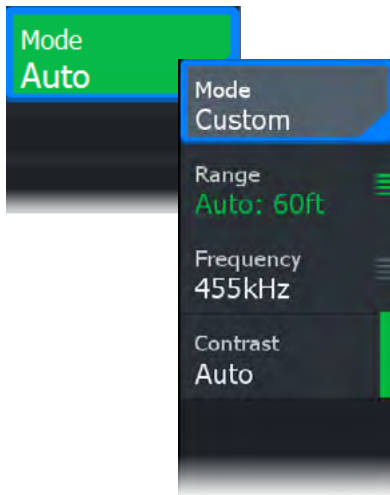
SideScan

SideScan provides a wide coverage in high detail of the seabed to the sides of your vessel. The SideScan application is available when a SideScan capable transducer is connected your unit.



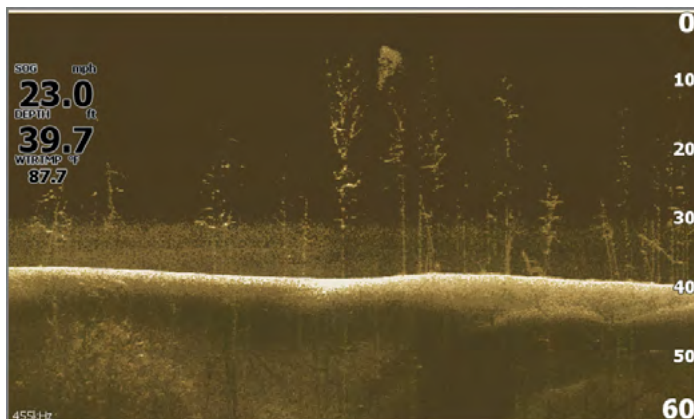
- Use the zoom keys to zoom view different parts of the water column.
- Use the arrow keys to position the cursor and pan the image.

By default, your unit is set to **Auto** mode, and all settings are automated. Select **Auto** in the panel menu and change to **Custom** mode to customize the sonar settings.



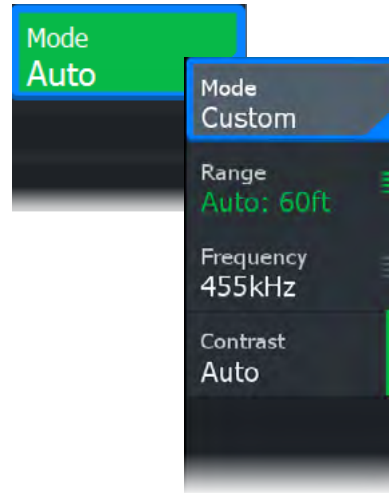
DownScan

DownScan provides detailed images of structure and fish directly below your vessel. The DownScan application is available when a DownScan-capable transducer is connected to your unit.



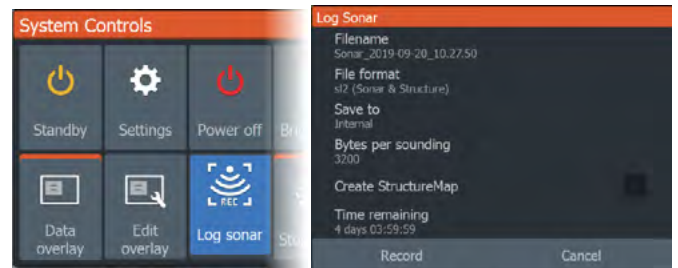
- Use the zoom keys to zoom view different parts of the water column.
- Use the arrow keys to position the cursor and pan the image.

By default, your unit is set to **Auto** mode, and all settings are automated. Select **Auto** in the panel menu and change to **Custom** mode to customize the sonar settings.

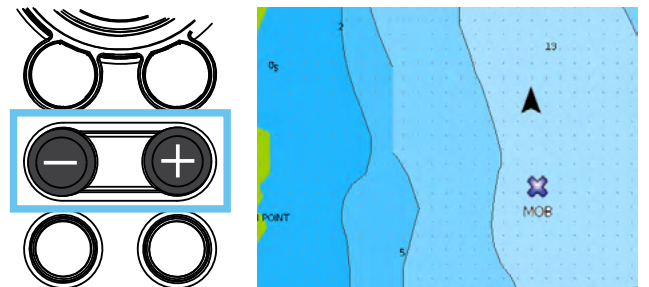


Log Sonar

Activate the **Log Sonar** dialog from the **System Controls** or **Settings > Sonar** dialogs. Save the sonar log data internally or to a microSD® card.



MOB waypoint



Activate a crew overboard (MOB) waypoint by pressing both + and - keys simultaneously. The display shows navigation information to the MOB waypoint.

©Reg. U.S. Pat. & Trm. Off, and ™ common law marks.

Visit www.navico.com/intellectual-property to review the global trademark rights and accreditations for Navico Group and other entities.

©2024 Navico Group. All Rights Reserved. Navico Group is a division of Brunswick Corporation.