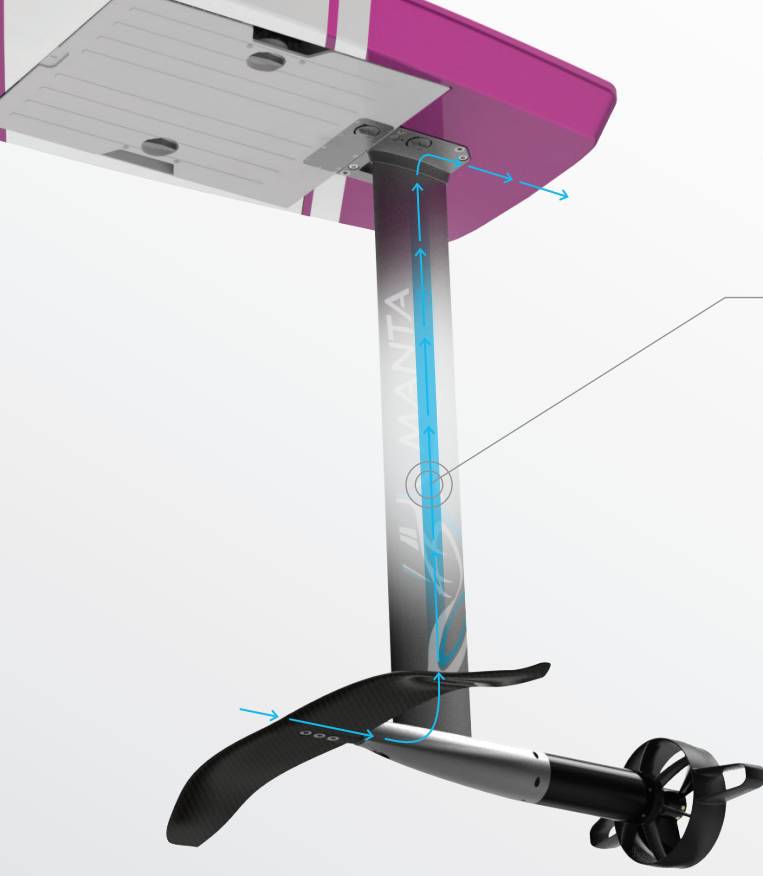


THE **VOLT4** E-FOIL



MANTA
FUTURE IS FOILING
FOILS



Water-Cooled Electronics

Improved Performance
Improved Thermal Management

Improved Grip

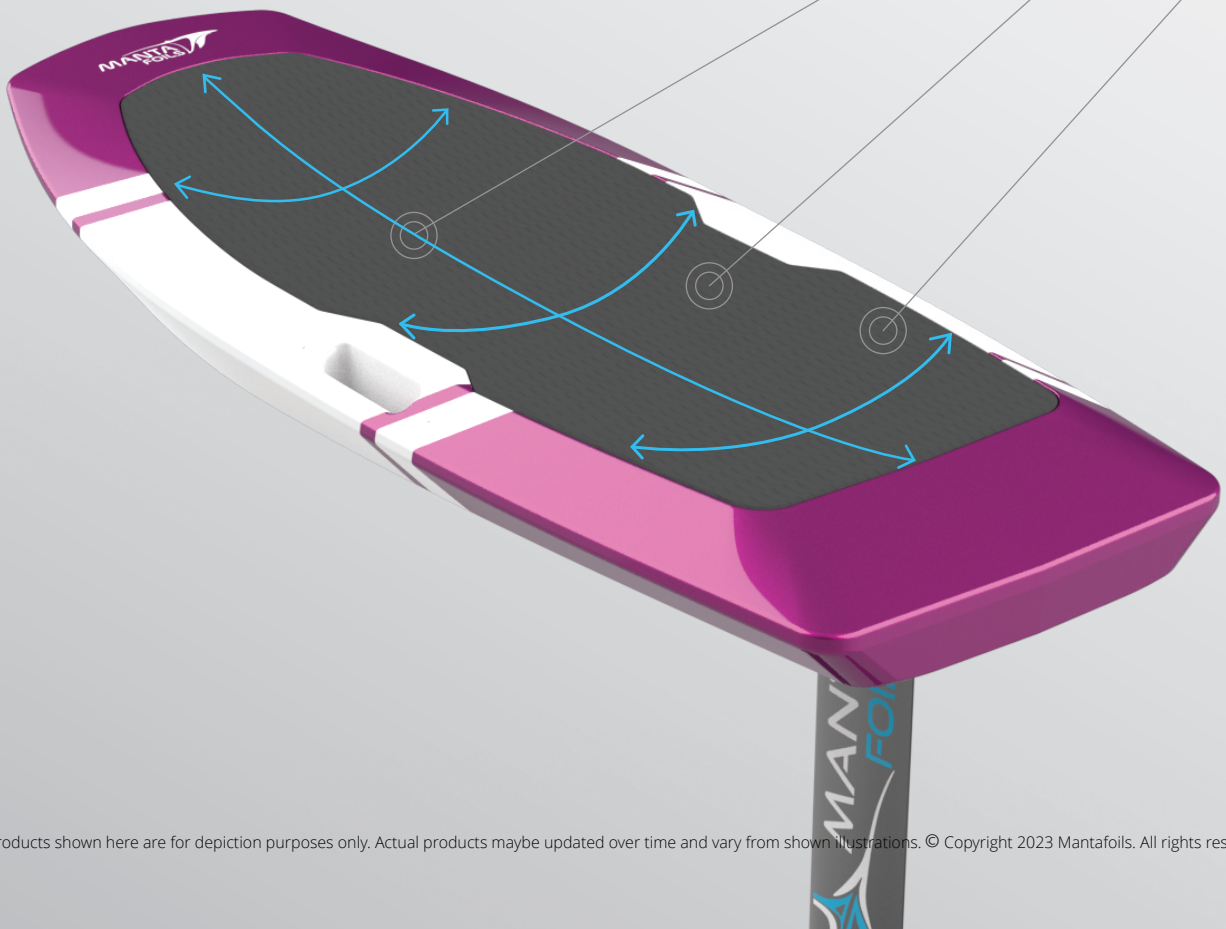
New Deck Pad Surface

Clean Deck

No Hinges / No Latches

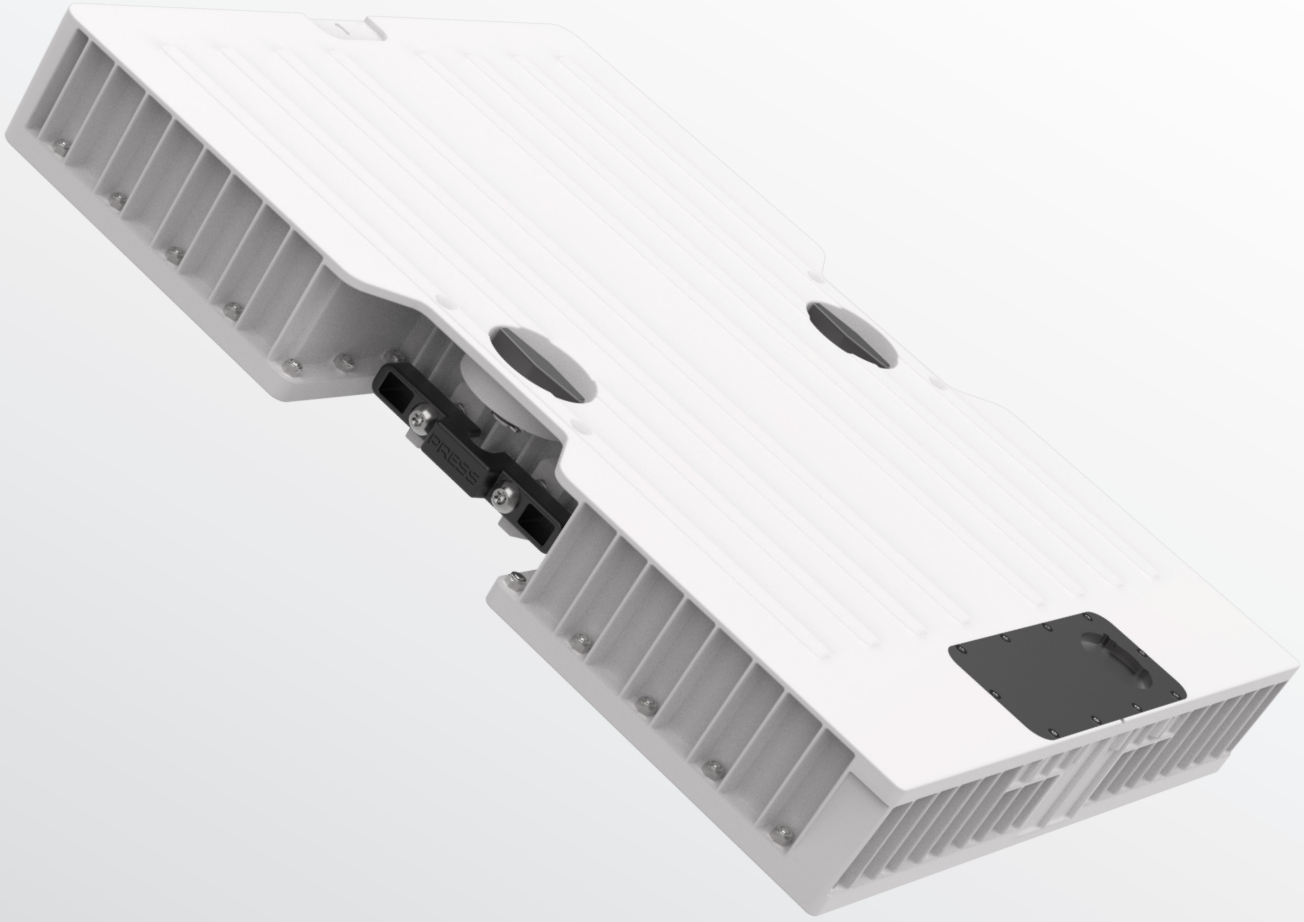
Improved Board Control

3D Concave Deck




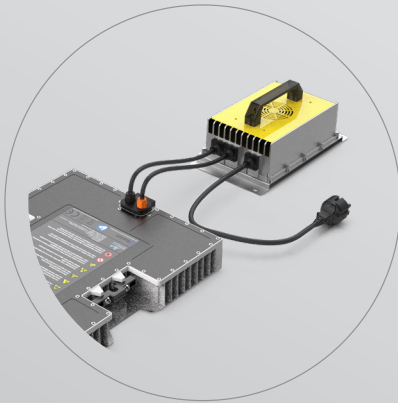
New Battery Design

Largest battery on the Market!



 180 mins Ride Time

 Sleek Design



Fast Charging
2.5 hours



Dual-seal Protection



Battery Monitoring Application
Bluetooth Connectivity

Innovative Battery Design

10x less solder points for improved reliability
Reduced heat under sun exposure

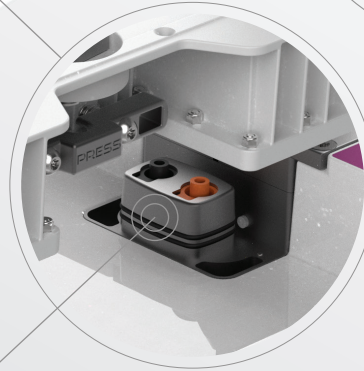
Quick-Lock Technology

Tool-free installation



Safety Locks

Spring-loaded safety release mechanism



Power Connectors

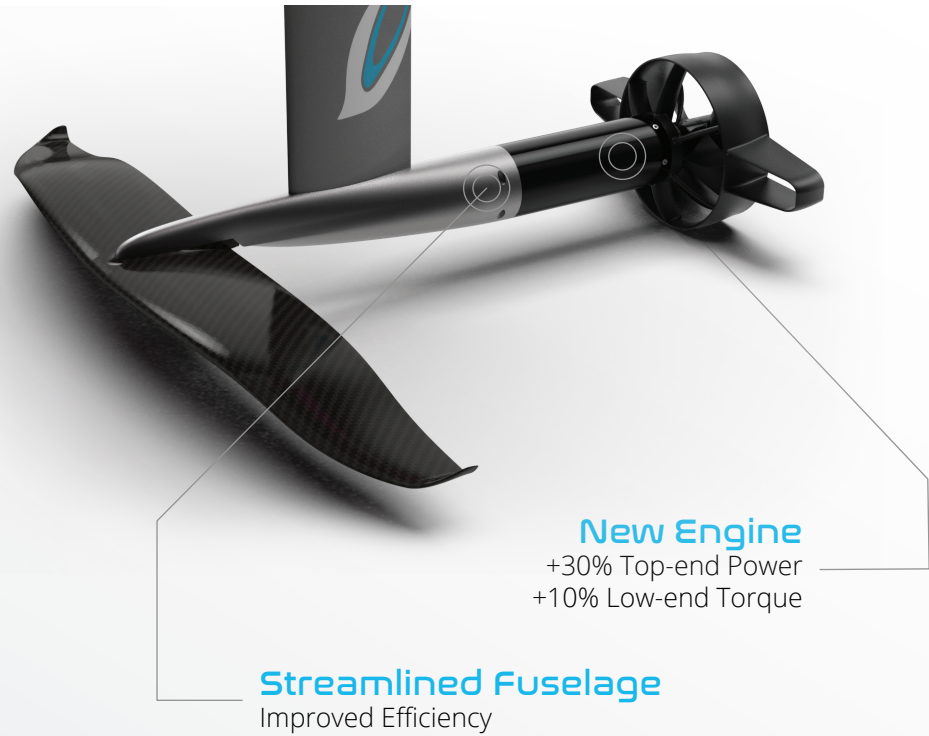
Cable-free power connectors
Triple seal waterproofing
Improved reliability



Magnetic Activation

Board activation via magnet





Streamlined Fuselage
Improved Efficiency

New Engine
+30% Top-end Power
+10% Low-end Torque

Manta Prop Guard
Innovative Design



Surfing Stabilizer
Hydrodynamic design
Reduced drag

Normal Prop
3 Blades
High Power



Folding Prop
2 Blades
Increased Efficiency
Optimized for Surfing



JET PROPULSION

Modular Design
Plug-n-play design



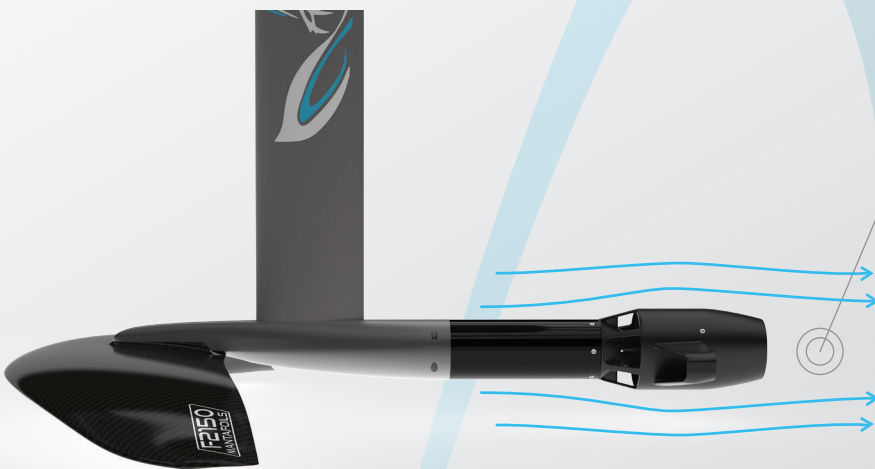
Increased Safety
Fully Ducted Propulsion



Efficient
High Efficiency Propulsion



Smoother Ride
Reduced Drag
Smooth Throttle Delivery



Modular Design

Choose between different combinations to match your riding style.

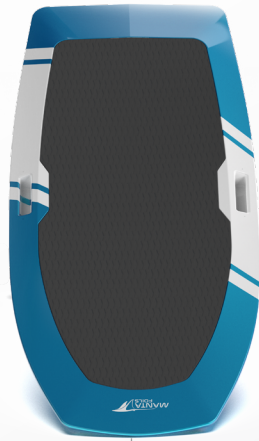


Discovery

5'11" - 180x79cm (150L)

Material: Carbon Fiber Reinforced Composite

Level: Beginner / School Riders



Explore

5'5" - 165x70cm (100L)

Material: Carbon Fiber Reinforced Composite

Level: Occasional and Heavier Riders



Elite

4'8" - 142x60cm (75L)

Material: Carbon Fiber Reinforced Composite

Level: Confirmed Riders



Absolute

4'4" - 132x56cm (50L)

Material: Ultra-light Carbon Fiber Prepreg

Level: Expert & Light Riders



Race Wing

800cm²

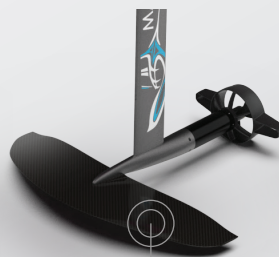
High Speed
Aggressive Carving



Glider Wing

1350cm²

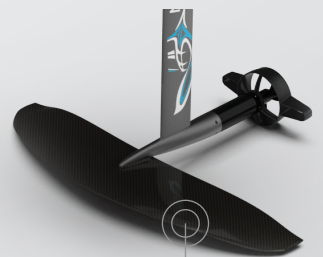
High Efficiency
Long Range



Free Ride Wing

1600cm²

All-around Wing
Smooth Turns



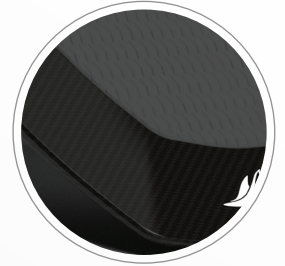
Lifter Wing

2150cm²

Stronger Lift
Heavy Riders

Exclusive New Colors & Finishes

Automotive Grade finishes with custom color options are now available!



Lightest E-foil Board at only 5.5 kg

The Absolute **50L** **CARBON** **FINISH**

Complete Range of Colors

Choose from our wide range of Paints and Finishes.



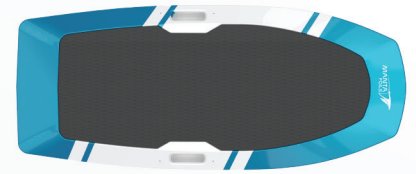
GUNMETAL
MATTE FINISH



FIRECRACKER ORANGE
METALLIC FINISH



JET BLUE
METALLIC FINISH



STELLAR PURPLE
METALLIC FINISH



VOLCANO RED
METALLIC FINISH



PHOENIX YELLOW
METALLIC FINISH



GREEN HORNET
METALLIC FINISH



All New Remote Control

Most Advanced Remote Control on an E-foil.



High Res. Display







Soft-click Buttons



High Precision Trigger



-  Wireless Charging
-  Ergonomic Size
-  Logs Recording
-  Dual-core Microprocessor



BOARD BAG TROLLEY

The Mantafoils Board Bag is designed to protect your premium board from unnecessary UV light exposure and to ensure your board stays free from scratches and other damage that may happen during transportation.

Our Board Bag comes with snap-on wheels attachment so you can easily roll your board to the water at the beach

WING FOIL ADAPTER

Never miss a session with our Wingfoil adaptor which is designed to snap in place of the battery

Quickly switch between the efoil set up or the wingfoil setup and enjoy your foiling sessions to the fullest.



WARRANTY

Your e-foil package comes standard with a 2 years manufacturer's warranty*.

*Warranty covers any manufacturing defects in the E-foil and Battery pack for a period of 2 years or 300 cycles; whichever comes first.



Contact Us

sales@mantafoils.com

PBU C 49 - Dubai Production City

Dubai - United Arab Emirates

www.mantafoils.com