



NSX®

BASIC OPERATION GUIDE ENGLISH

Software version: 1.3.257



CONTENTS

- 6 About**
- 6 Turn unit on/off**
 - 6 External power control
- 7 First startup**
- 8 Quick access menu**
 - 8 Access by swiping
 - 8 Access by power button
 - 9 Connect to mobile app
 - 10 Standby
 - 10 Screen lock
 - 10 Screenshot
 - 10 Report issues
 - 11 Night mode
 - 11 Brightness
- 12 Home screen**
 - 13 Edit home screen
- 14 Recent apps panel**
 - 15 Emergency and MOB
- 16 Apps**
 - 16 Open apps
 - 16 Close apps
 - 17 Pin apps
 - 17 Unpin apps
 - 18 Custom app groups
- 19 Controllers**
 - 19 Show control bar
 - 20 Open controller
 - 20 Float a controller
 - 21 CZone® Digital switching controller
 - 21 Mercury® Engines controller
- 22 Alerts**
 - 22 View alert messages
 - 23 Manage alert rules
- 24 Status icons**
- 25 USB port**
- 25 Card reader**
- 26 Connected devices**
 - 26 Configure connected devices
 - 26 Run simulator
- 27 System software**
 - 27 Update software
 - 27 Backup data
- 28 System settings**
 - 28 Adjust system settings
 - 30 Restore factory settings

Disclaimer

⚠ WARNING: Refer to important safety information in the user app guides, product documentation and review all warnings, limitations, and disclaimers before using this product.

This product is not a substitute for proper training and prudent seamanship. It is the owner's sole responsibility to install and use the equipment in a manner that will not cause accidents, personal injury or property damage. The user of this product is solely responsible for observing maritime safety practices.

Navigational features that appear in this guide are not a substitute for proper training and prudent seamanship. They do not replace a human navigator and SHOULD NOT be relied on as a sole or primary source of navigation. It is the operator's sole responsibility to use more than one navigational methods to ensure the route suggested by the system is safe.

NAVICO HOLDING AS AND ITS SUBSIDIARIES, BRANCHES AND AFFILIATES DISCLAIM ALL LIABILITY FOR ANY USE OF THIS PRODUCT IN A WAY THAT MAY CAUSE ACCIDENTS, DAMAGE OR THAT MAY VIOLATE THE LAW.

This manual represents the product as at the time of printing. Navico Holding AS and its subsidiaries, branches and affiliates reserve the right to make changes to the product and/or specifications at any time without notice. Please contact your nearest distributor if you require any further assistance.

Governing language

This statement, any instruction manuals, user guides and other information relating to the product (Documentation) may be translated to, or has been translated from, another language (Translation).

In the event of any conflict between any Translation of the Documentation, the English language version of the Documentation will be the official version of the Documentation.

Copyright

Copyright © 2023 Navico Holding AS.

Trademarks

®Reg. U.S. Pat. & Tm. Off, and ™ common law marks. Visit www.navico.com/intellectual-property to review the global trademark rights and accreditations for Navico Holding AS and other entities.

- Navico® is a trademark of Navico Holding AS.
- Simrad® is a trademark of Kongsberg Maritime AS, licensed to Navico Holding AS.
- NSX® is a trademark of Navico Holding AS.
- CZone® is a trademark of POWER PRODUCTS, LLC.
- Mercury Marine® is a trademark of Brunswick Corporation.
- SmartCraft® is a trademark of Brunswick Corporation.
- App Store® and App Store logos are trademarks of Apple Inc.
- Google Play® and Google Play logos are trademarks of Google LLC.
- QR code® is a trademark of Denso Wave Incorporated.
- Bluetooth® is a trademark of Bluetooth SIG, Inc.
- Wi-Fi® is a trademark of Wi-Fi Alliance.
- SD® and microSD® are trademarks of SD-3C, LLC.

Compliance statements

Declarations

The relevant declarations of conformity are available at: www.simrad-yachting.com.

United Kingdom

Simrad® NSX complies with UKCA under The Radio Equipment Regulations 2017.

Europe

Navico declare under our sole responsibility that the product conforms with the requirements of CE under RED 2014/53/EU.

United States of America

Navico declare under our sole responsibility that the product conforms with the requirements of Part 15 of the FCC Rules. Operation is subject to the following two conditions: (1) this device may not cause harmful interference, and (2) this device must accept any interference received, including interference that may cause undesired operation.

⚠ WARNING: The user is cautioned that any changes or modifications not expressly approved by the party responsible for compliance could void the user's authority to operate the equipment.

This equipment generates, uses and can radiate radio frequency energy and, if not installed and used in accordance with the instructions, may cause harmful interference to radio communications. However, there is no guarantee that the interference will not occur in a particular installation. If this equipment does cause harmful interference to radio or television reception, which can be determined by turning the equipment off and on, the user is encouraged to try to correct the interference by one or more of the following measures:

- Reorient or relocate the receiving antenna.
- Increase the separation between the equipment and receiver.
- Connect the equipment into an outlet on a circuit different from that of the receiver is connected.
- Consult the dealer or an experienced technician for help.

ISED Canada

This device complies with ISED (Innovation, Science and Economic Development) Canada's license-exempt RSSs. Operation is subject to the following two conditions: (1) This device may not cause interference; and (2) This device must accept any interference, including interference that may cause undesired operation of the device.

La traduction française de ce document est disponible sur le site Web du produit.

Australia and New Zealand

Navico declare under our sole responsibility that the product conforms with the requirements of:

- Level 2 devices of the Radiocommunications (Electromagnetic Compatibility) standard 2017.
- Radiocommunications (Short Range Devices) Standards 2021.

Warranty

The warranty card is supplied as a separate document. In case of any queries, refer to the brand website of your unit or system: www.simrad-yachting.com

Internet usage

Some features in this product use an internet connection to perform data downloads and uploads. Internet usage via a connected mobile/cell phone internet connection or a pay-per-MB type internet connection may require large data usage. Your service provider may charge you based on the amount of data you transfer. If you are unsure, contact your service provider to confirm rates and restrictions. Contact your service provider for information about charges and data download restrictions.

About this manual

Product features

Features described and illustrated in this guide may vary from your display unit due to continuous development of the software.

Document version 004

For the latest version of this document in supported languages, use your mobile device to scan the QR code® below or visit: www.simrad-yachting.com/downloads/nsx



ABOUT

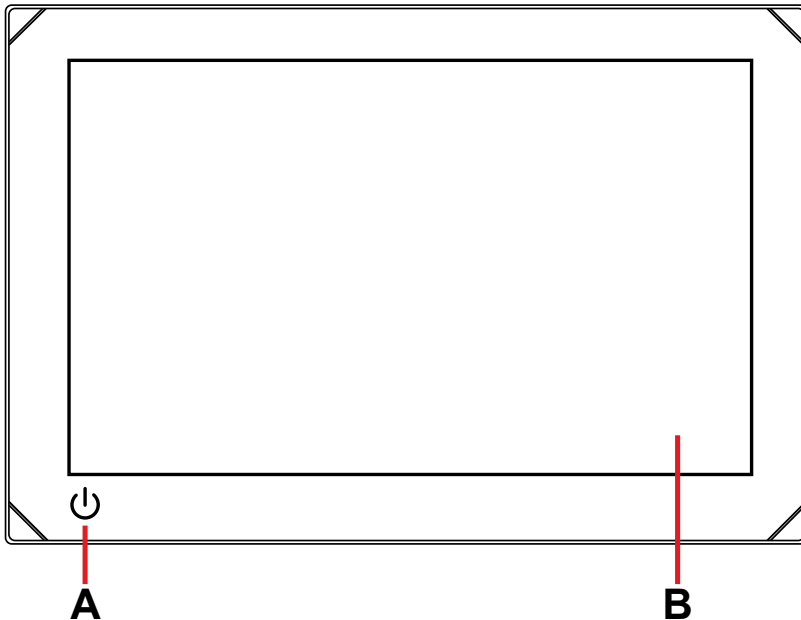
This document describes the basic operation of the NSX multi-function display (MFD) unit.

For the latest version of this document and other app guides, we recommend you download the Simrad® mobile app or visit www.simrad-yachting.com/nsx.

TURN UNIT ON/OFF

To turn the unit on, press and hold the power button. A beep sounds to indicate it is powering up.

To turn the unit off, press and hold the power button, or select **Power off** from the quick access menu.



A Power button

B Touchscreen

External power control

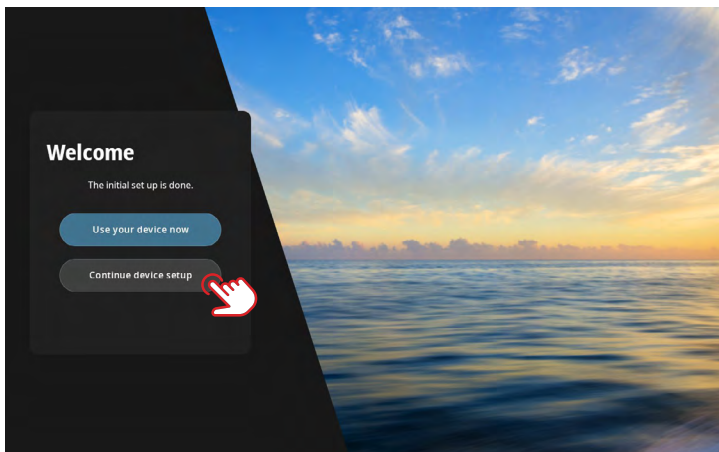
Power to the unit can be controlled by an external switch or other units. For details about available power options, refer to the unit's installation manual.

→ *Note: If your MFD is controlled by an external power source, it cannot be powered off using the power button. Pressing and holding the power button puts the unit in standby mode. To wake the unit, press the power button again.*

FIRST STARTUP

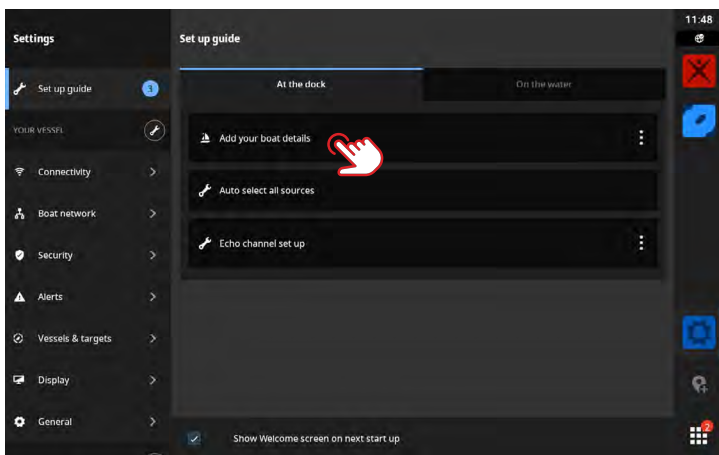
When you start the unit for the first time, or when you start it after a factory reset, you need to complete the initial setup for language, country, timezone and scan for an existing boat network. After that, the **Welcome** screen presents you with two choices:

- Select **Use your device now** to start using the device immediately.
 - *Note: If you select this option, you will continue to receive alert notifications to complete the device setup.*
- Select **Continue device setup** (recommended) to complete the device setup.



From the **At the dock** tab, complete the details as per the on-screen prompts.

- *Note: The **On the water** tab remains disabled if there are no outstanding configuration tasks.*



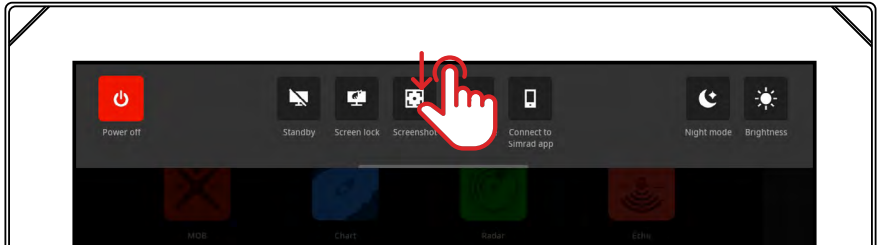
- *Note: All settings configured during the first startup can be changed later.*

QUICK ACCESS MENU

The quick access menu gives you quick access to basic system settings and features.

Access by swiping

You can display the quick access menu by swiping down from the top of the screen.



Access by power button

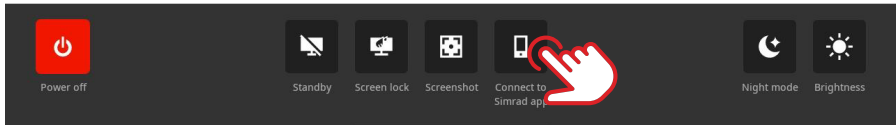
Alternatively, you can display the quick access menu by pressing the power button.



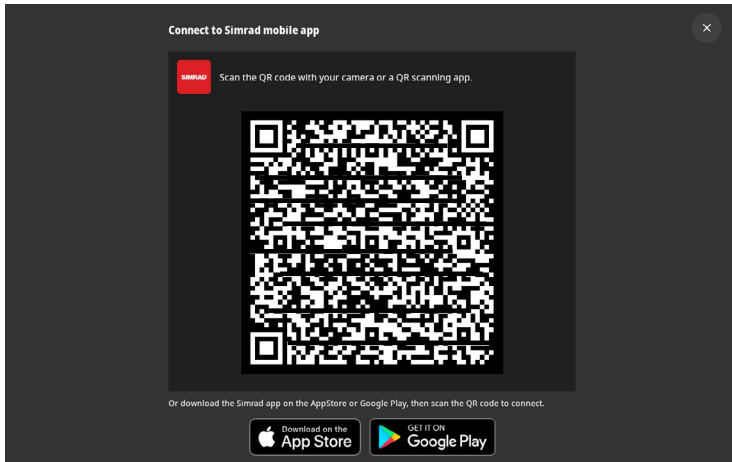
→ *Note: To hide the quick access menu, swipe up or tap anywhere on the screen.*

Connect to mobile app

Select **Connect to Simrad® app** from the quick access menu to connect your mobile device (phone or tablet) to the unit.



Download the Simrad® app from the App Store® or Google Play®, then scan the QR code.



Once connected, you can use the mobile app to:

- View and download app guides for your mobile device
- Register your display unit
- Subscribe to Premium charts
- Create your own waypoints, routes and tracks
- Explore points of interest (POI)
- Monitor marine traffic and weather
- Read the latest tips and tricks
- Download and apply software updates to the display unit

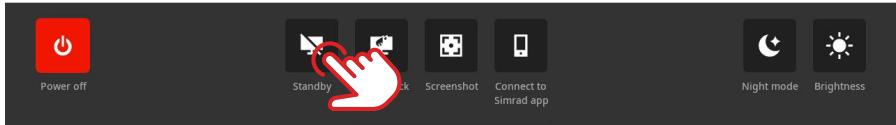
→ **Note:** You need an active internet connection to establish a connection between your mobile device and display unit. You can also use the hotspot function on the display unit to connect to your mobile device via Wi-Fi® connection.

Standby

Standby mode helps conserve power when the unit is not in use without completely turning it off. When in standby, the screen turns off while the system and connected devices continue to run.

Select **Standby** from the quick access menu to enter standby.

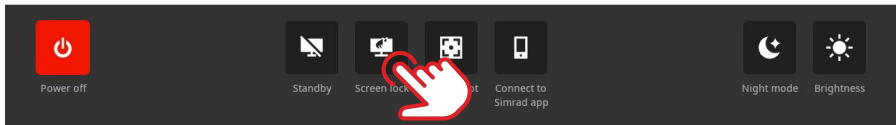
Press the power button to exit standby mode.



→ *Note: The on-screen power button is not available when the unit is controlled by an external switch or other units.*

Screen lock

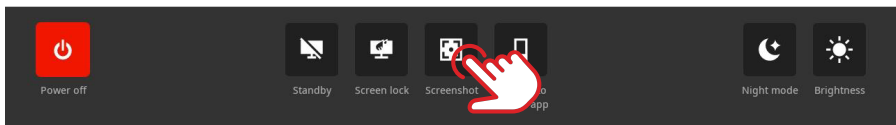
Select **Screen lock** from the quick access menu to lock the touchscreen and prevent accidental operation. Press the power button to unlock the touchscreen.



→ *Note: The touchscreen automatically unlocks to display alarms or warning alerts even if the touchscreen was previously locked.*

Screenshot

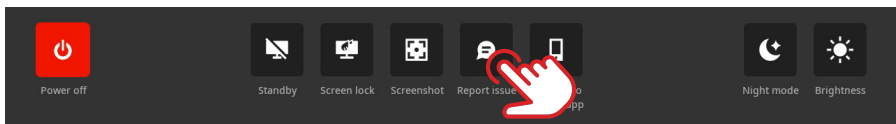
Select **Screenshot** from the quick access menu to capture an image of your screen. Images are stored on a microSD® card or USB storage device inserted into the unit.



→ *Note: If a microSD® card and USB storage device are both inserted, images are saved to the USB storage device.*

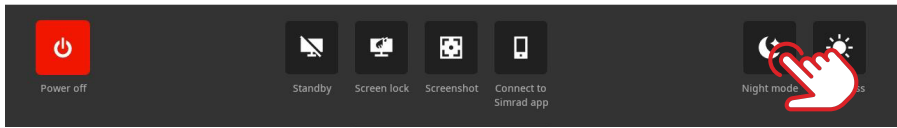
Report issues

To report software issues, select **Report issue** from the quick access menu. Follow the on-screen prompts to add a name and description to the report, it will be saved onto the microSD® card. If you need further assistance, contact Simrad® Technical Support.



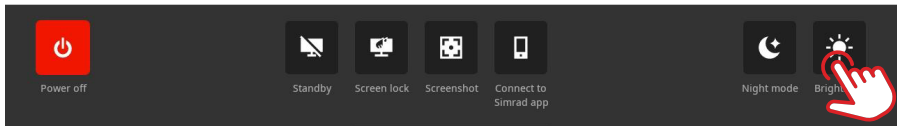
Night mode

Night mode optimizes the color palette and backlight for low light conditions. Select **Night mode** from the quick access menu to turn night mode on or off.




Brightness

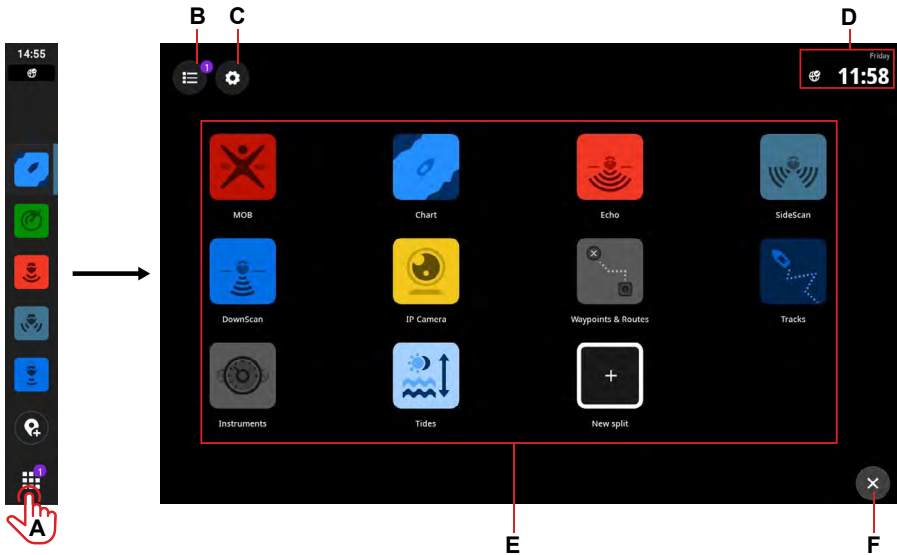
To switch between the display's pre-defined brightness levels, press the power button repeatedly. Alternatively, select **Brightness** from the quick access menu and slide the bar to the desired level.



→ *Note: If you dim the brightness so the screen appears black when in brighter environments, the unit may appear to be turned off.*

HOME SCREEN

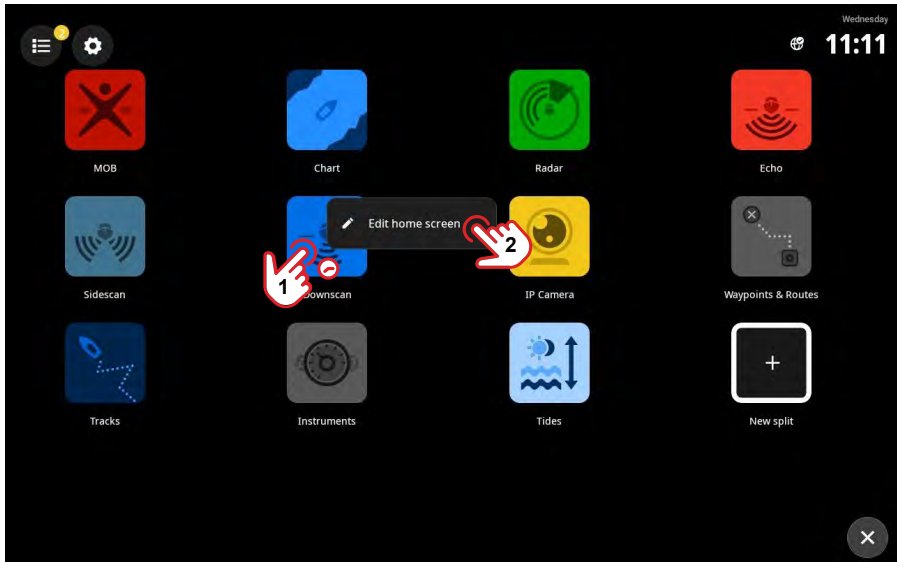
To open your home screen, select the home button  on the recent apps panel. All apps, settings and alert messages can be accessed from the home screen.



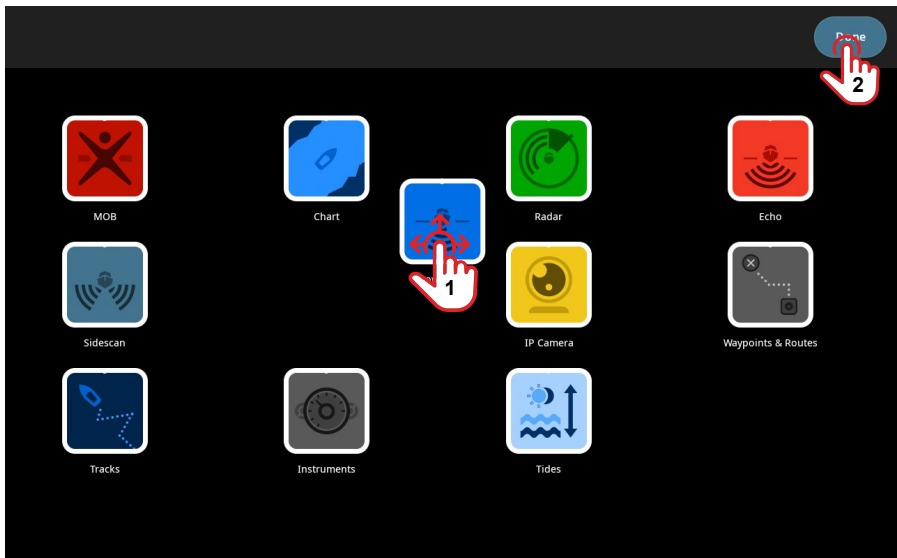
- A Home button - select to view the home screen
 - B Alerts list - select to view recent and historic system alerts
 - C Settings - select to view MFD settings
 - D Status bar - displays the current day and time
 - E Apps - displays a grid layout of all the system and custom app groups
 - F Exit - select to exit the home screen and return to last app
- *Note: The exit button (F) is disabled if there are no active apps.*

Edit home screen

To change the order of your home screen apps, select and hold an app (1) to view the **Edit home screen** button (2), then select it.

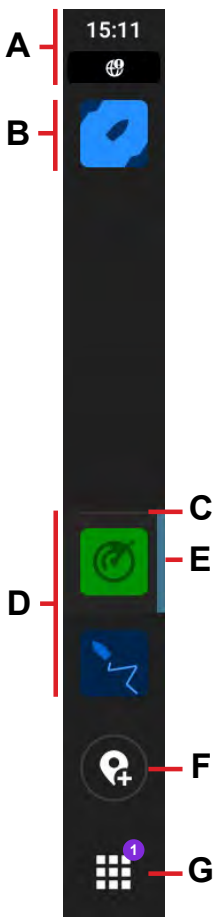


All the app icons will appear with a white outline. Select and drag the app icon (1) to your desired position on the screen grid, then select **Done** (2).



RECENT APPS PANEL

When an app is running or pinned, its icon displays on the recent apps panel.

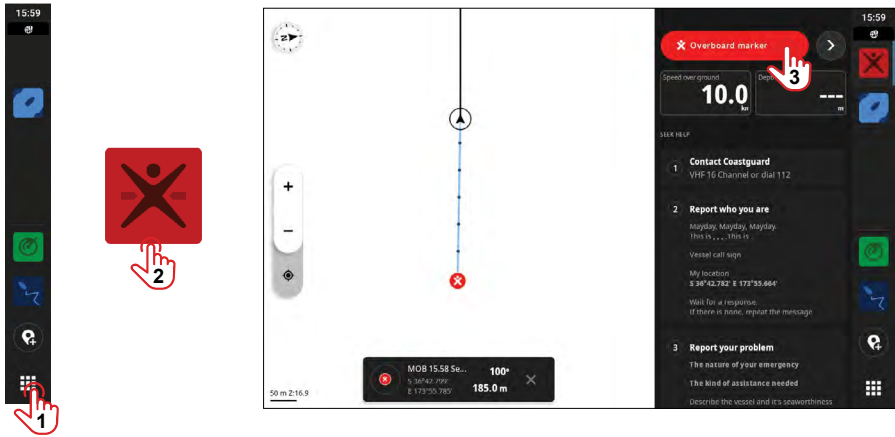


- A Status information – Displays the time and status icons
- B Pinned apps display at the top of the panel
- C Divider – A horizontal line separates pinned and unpinned apps
- D Unpinned apps display at the bottom of the panel
- E Active app – A vertical line appears next to the app currently showing on the main display
- F Waypoint button – Creates a waypoint at the vessel's current location and displays a confirmation. Waypoints created this way are visible in the Chart app and Waypoints & Routes app.
- G Home button – When selected, the home screen displays and the button changes to the close/back button. A badge indicates the number of alert messages that need attention.

Emergency and MOB

Use the Man Overboard (MOB) app for emergency situations. To open the app, select **MOB** from your home screen.

Select **Overboard marker** to create a MOB waypoint at your vessel's location and follow the instructions to respond to the emergency.



→ *Note: Use the Waypoints & Routes app to remove your MOB waypoint.*

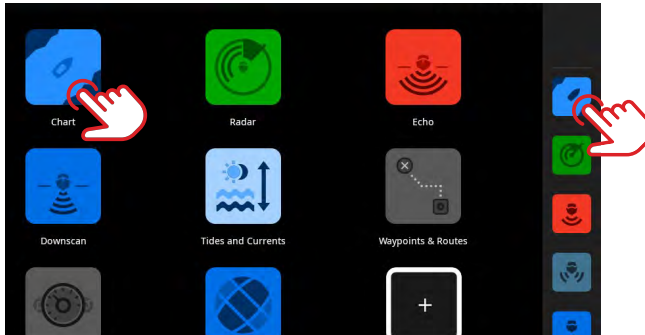
APPS

An app is a program for a unique feature or piece of functionality. The availability of some apps depends on the size of your display unit and hardware connected to your system.

For app-specific user guides, download the Simrad® app on your mobile device and connect it to your display unit, or visit: www.simrad-yachting.com.

Open apps

To open an app, select the app icon from your home screen. Alternatively, if the app is pinned, you can select it from the recent apps panel.

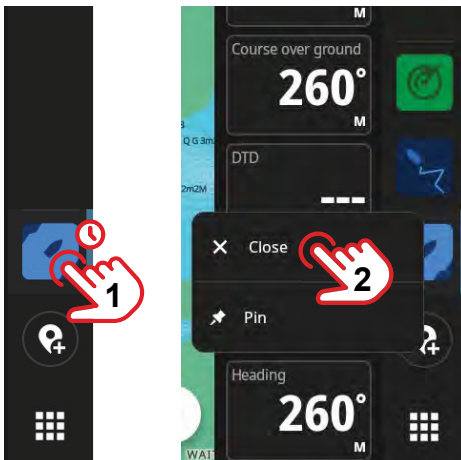


→ *Note: If an app is already open but not currently showing on your display, simply select it from your home screen or recent apps panel.*

Close apps

To close an app, select and hold it in the recent apps panel and select **Close**.

When you close an unpinned app, it disappears from the recent apps panel. If you close a pinned app, it continues to show in the recent apps panel.



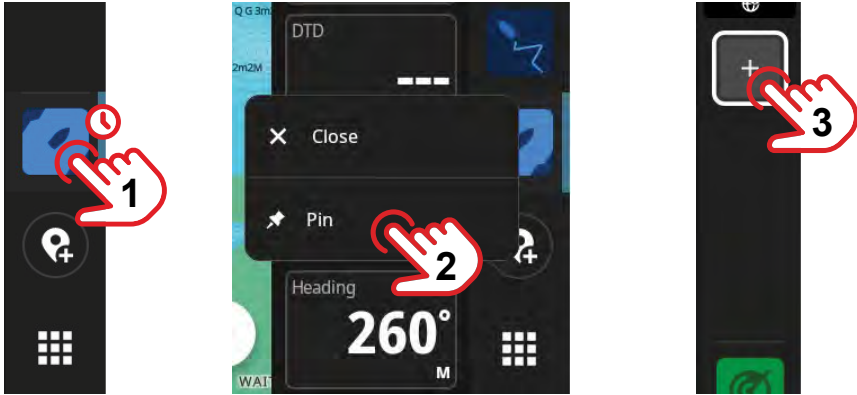
Pin apps

You can pin the apps you use most often to your recent apps panel. Both individual apps or custom app groups can be pinned to the recent apps panel.

To pin an app, select and hold it on the recent apps panel and select **Pin**.

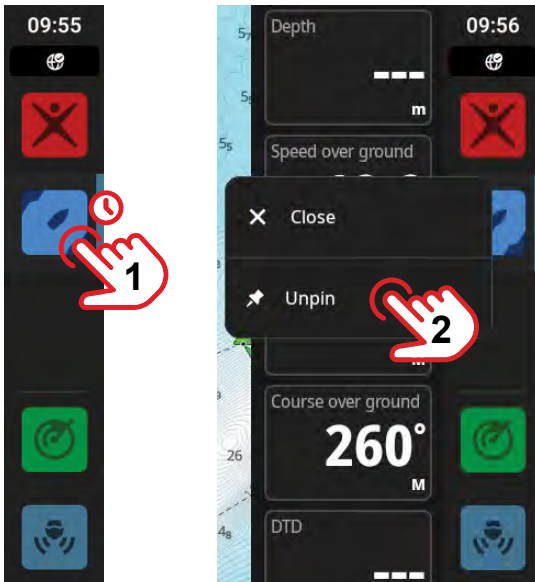
Select a plus button in the recent apps panel to specify where you want to position the app.

→ *Note: The app you pin at the top of the recent apps panel opens by default each time you restart the unit.*



Unpin apps

To unpin an app, select and hold it in the recent apps panel and select **Unpin**.

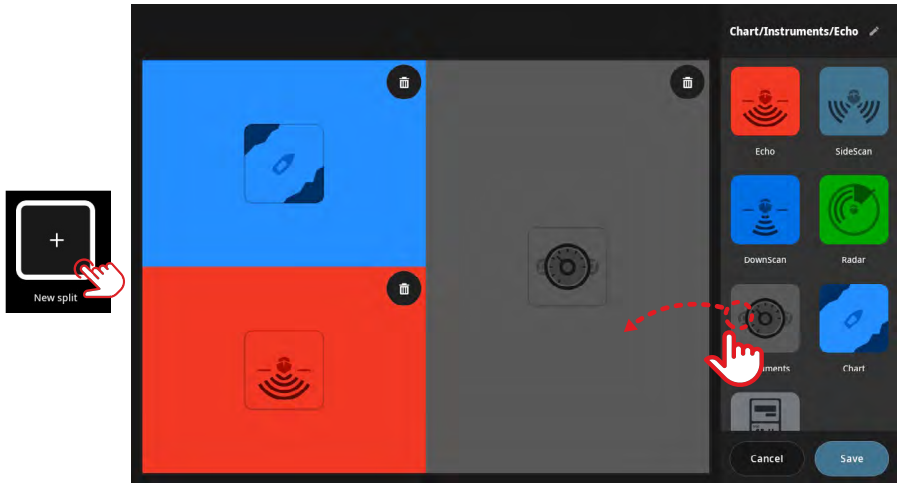


Custom app groups

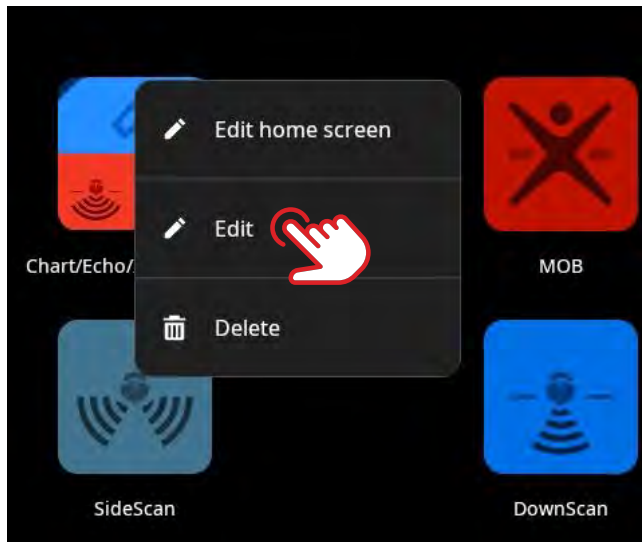
When you group apps, you can view two or more apps at the same time.

You can view more than one instance of the same app, such as two instances of the Chart app with different zoom levels.

To create a new app group, select **New split** on the home screen. Drag and drop the desired apps onto your new app group and select the edit icon to give it a unique name before you select **Save**.



To edit or delete an app group, select and hold its icon on your home screen or recent apps panel and select **Edit** or **Delete**.



CONTROLLERS

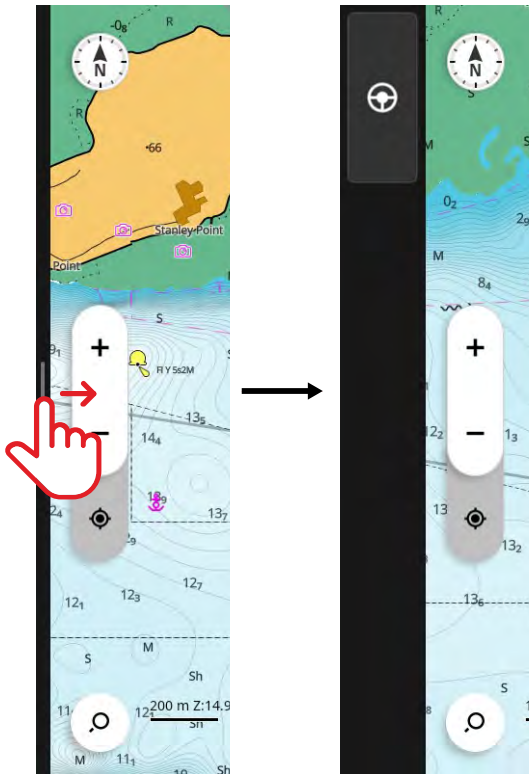
Controllers are vertical panels on your screen that allow you to remotely operate system devices, such as an autopilot control or audio server. If these devices are installed, you can access their controllers from your unit's control bar. For detailed information about a controller, refer to its specific guide.

The following controllers are available:

- Audio
- Autopilot
- CZone® Digital switching
- Mercury® Engines (cruise and troll functions)

Show control bar

To show the control bar, swipe in from the left edge of the screen.



To hide the control bar, swipe out to the left of the screen.

→ Notes:

- Any active control bar app must be closed to hide the control bar.
- Hiding the control bar gives you more space to display your apps.

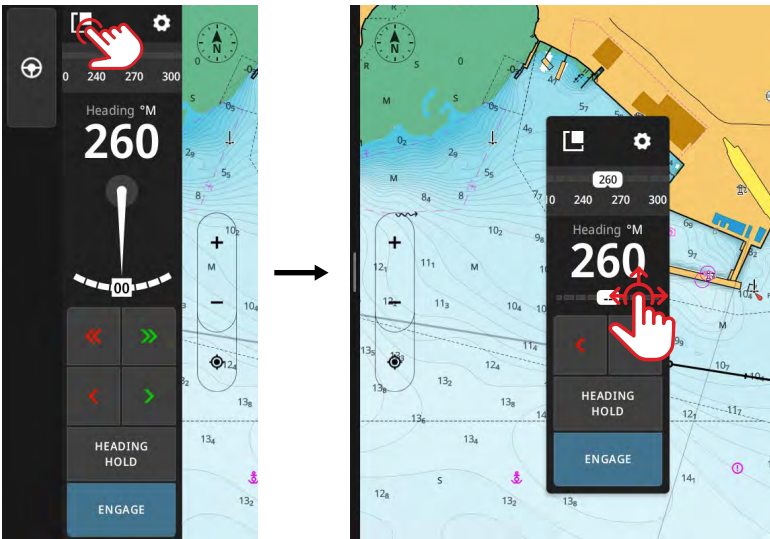
Open controller

To open a controller, select the controller button from the control bar. Select the controller button again to close it.



Float a controller

To detach a controller from the control bar, select and drag the float icon to your desired location on the screen. Select the float icon again to re-attach the controller to the sidebar.

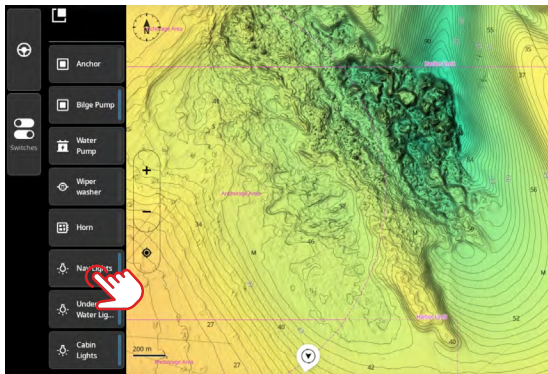


→ *Note: The floating controller feature is available on units with 9" and 12" displays.*

CZone® Digital switching controller

The control bar switches appear automatically when a CZone® device is commissioned on the NMEA 2000® network. Select a button to toggle on/off the device.

→ *Note: Refer to the CZone® switch documentation and configuration tool for guidance.*



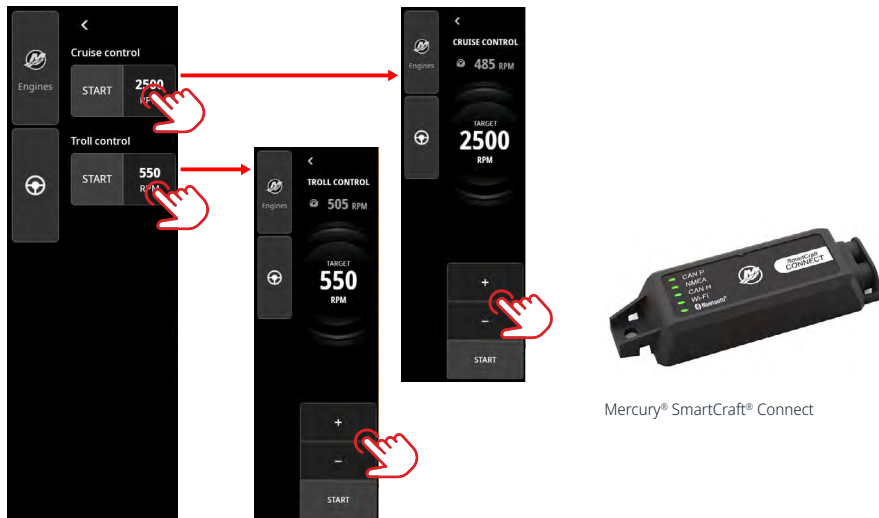
Mercury Engines controller

The Mercury Engines controller is available when a Mercury SmartCraft Connect gateway is installed and commissioned on the vessel. Refer to the **Mercury Controller Guide** for operating instructions.

The following features are supported:

- Cruise control — provides precise control of the engine RPM or speed control
- Troll control — provides precise low-speed control in 10 RPM increments

→ *Note: Consult your Mercury SmartCraft Connect installer or refer to the product documentation for further information.*



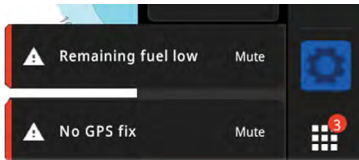
Mercury® SmartCraft® Connect

ALERTS

The unit continuously monitors connected sensors and devices for alerts, system faults and environmental changes. Alerts can be configured by setting up rules.

When triggered, an alert rule generates one of the following message types:

- **Notification** – a message that stays on the screen for 15 seconds and then automatically disappears, or until you acknowledge it.
- **Warning** – a message that stays on the screen until you acknowledge it.
- **Alarm** – a message that stays on the screen until you acknowledge it. If your system's siren is on, it is also accompanied by an audible alarm.



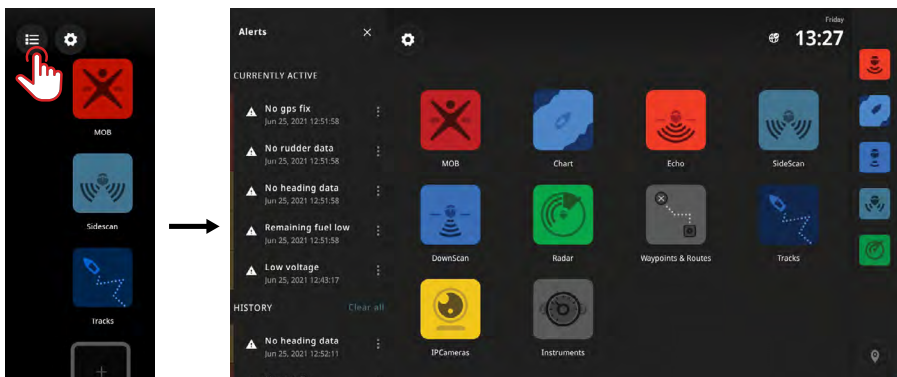
Acknowledge an alert

Select **Mute** or swipe it towards the right of the screen to dismiss an alarm alert. A badge continues to display on the home button until the alert is resolved.

View alert messages

To view a list of all your alert messages, select the alerts button on your home screen.

- The **CURRENTLY ACTIVE** section contains alarms and warnings with unresolved conditions (the conditions that triggered the alerts still exist).
- The **UNREAD** section contains notifications you did not acknowledge (they automatically disappeared after 15 seconds).
- The **HISTORY** section contains alarms and warnings with resolved conditions, and notifications you have acknowledged.



Select the more button  to manage or remove an alert.

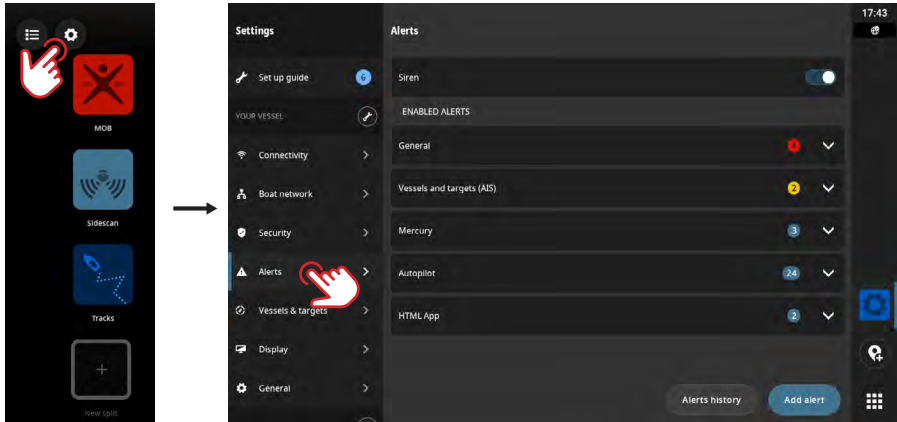
→ *Note: The alerts list only displays alerts generated since the unit was last turned on.*

Manage alert rules

You can edit and delete default alert rules, or create your own, through the **Settings** menu.

The **Alerts** panel allows you to apply one or more message types (notification, warning or alarm) to each alert and set the value that triggers it.

You can also delete your alerts history and turn on the unit's siren from this panel.





















→ Notes:

- Turn on the siren for audible alarm alerts.
- When connected, external alarms will also be audible if an alarm alert is triggered.

STATUS ICONS

Status icons show on your home screen or at the top of your recent apps panel when an app is open.

Icon	Description	
	Wi-Fi® signal strength	
	Wi-Fi® signal error	
	Wi-Fi® disconnected	
	Internet connected	
	Internet connection error	
	No internet	
	Connection to internet	
	Navigation indicator	Shows when actively navigating towards a waypoint or along a route.
	Mobile device disconnected	Shows only if the phone is expected to be connected
	Bluetooth® connected	Shows if a Bluetooth® device is connected
	Sound off	Shows if an audio device is connected and the sound is off
	Water mode	Shows if the screen is less responsive due to water on the display
	Screen locked	Shows if the screen has been locked via the quick access menu
	Check oil	
	Fuel low	
	Radar transmitting	
	Remote controller	The MFD is controlled by a remote controller
	Synchronizing	Synchronizing waypoints, routes and tracks

USB PORT

The USB-A port can be used to:

- Connect a MI-10 microSD® card reader.
- Connect a USB storage device or a generic USB card reader.
- Store screenshots, sonar recordings and other system data.

→ *Note: USB storage devices should be standard, PC-compatible hardware in FAT32, ExFAT or NTFS file system.*

CARD READER

A microSD® card can be used to:

- Provide detailed charts
- Store or transfer user data (waypoints, routes, tracks, screenshots)
- Update software

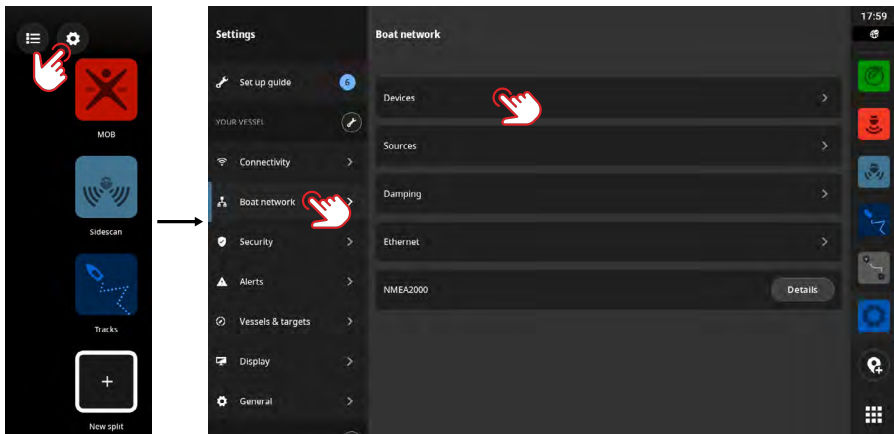
→ *Notes:*

- *If a microSD® card and USB storage device are both inserted, by default, data and screenshots are saved to the USB storage device.*
- *Do not download, transfer or copy files to a chart card as it can damage chart information on the card.*
- *MicroSD® cards up to a maximum of 256 GB capacity are supported in FAT32, ExFAT or NTFS file system.*
- *Always shut the protective cover securely after inserting or removing a microSD® card to keep the slot watertight.*

CONNECTED DEVICES

Configure connected devices

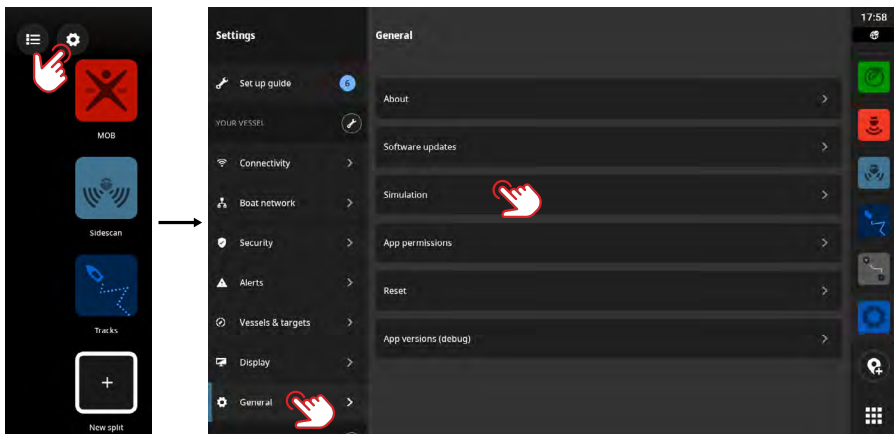
You can configure connected equipment from the devices list. Select the settings button from the home screen, then **Boat network** > **Devices** to open the devices list.



→ *Note: The configuration options available depend on the connected devices.*

Run simulator

The simulation feature lets you see how the unit works without being connected to sensors or other devices.



SYSTEM SOFTWARE

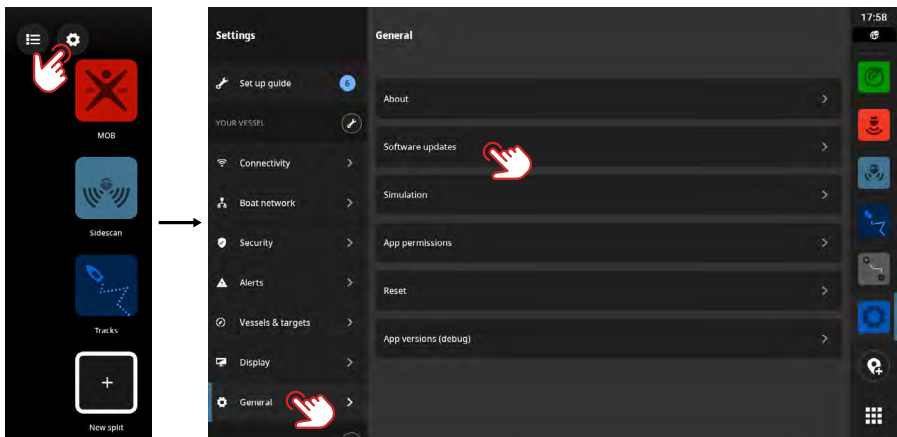
Update software

Your unit will automatically check for software updates for itself and connected devices when it's connected to the internet.

We recommend you register your device and install the Simrad® companion app onto your mobile device. You can update the unit's software using the mobile app too.

Alternatively, you can download software updates from the Simrad® website onto a USB storage device or microSD® card and manually update the software.

When you insert a microSD® card (or USB storage device for 9" and 12" models) with a newer software version, the unit automatically moves it to the right location and prompts for your permission to update.



Backup data

Waypoints, routes, and tracks data can be saved onto a microSD® card or USB storage device as a backup or to transfer data onto another unit. Refer to the **Waypoints & Routes** or **Tracks** app guide for instructions on data export.

Supported file format

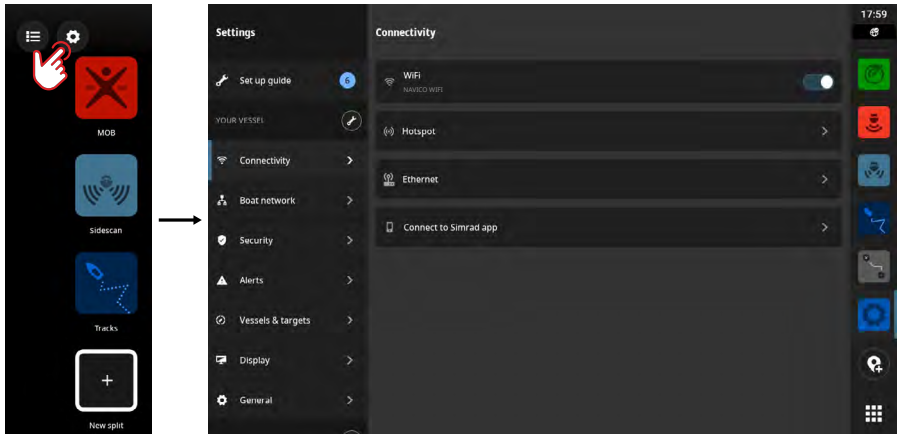
Backup data is created in the .USR file format. These files contain information such as waypoints, routes, tracks, and are used for backups or to transfer data between devices.

This unit supports the export and import of v6 .USR files.

SYSTEM SETTINGS

Adjust system settings

On the **Settings** screen, you can manage system settings and settings for connected devices.



Your vessel (the vessel's name)

Use to adjust vessel-specific settings. Most of the settings for your vessel were configured the first time the device was started.

→ *Note: The unit shows 'Your vessel' by default but changes as soon as you give your vessel a name in the devices list.*

Connectivity

Use to connect the unit to a Wi-Fi® network, create a hotspot, manage Ethernet connection settings, manage Bluetooth® settings, or connect to the Simrad® companion app.

→ *Note: Some marinas may require you to accept their terms of use to access Wi-Fi® internet connections. This connection method is not supported by the unit. We recommend you install the Simrad® companion app on your mobile device to download and install updates to your unit.*

Hotspot

This display unit can simultaneously connect to the internet and be a hotspot for Wi-Fi® connections; for example, to connect another mobile device to the unit. Turn on the device hotspot to connect to the Simrad® companion app without an active internet connection.

Boat network

Use to manage connected devices.

Devices

Lists all internal and external devices and modules. You can access setup options, configuration options and view details from the list.

Sources

Lists selected sources for various functions. You can manually select sources or let the system perform an automatic source selection for you.

Damping

If data appears erratic or too sensitive, apply damping to stabilize the data.

→ *Note: Damping values are only applied to data shown on the display where you set the damping.*

Security

Set a 4-digit PIN to prevent unauthorized access to your unit. You will need to set up a Simrad® account to set up a PIN.

You will be asked to enter your PIN when you turn on the unit or when you want to use the unit again after placing it on standby.

→ *Note: If you forget your display unit's PIN, use your Simrad® account login details to unlock it. An active internet connection is needed.*

Alerts

Use to add, edit and delete alerts. For more information, refer to the **Alerts** section of this guide.

Vessels & targets

Use to manage AIS and radar target settings.

Display

Use to manage additional display settings.

General

Provides information about your unit, system updates and more.

Simrad® account

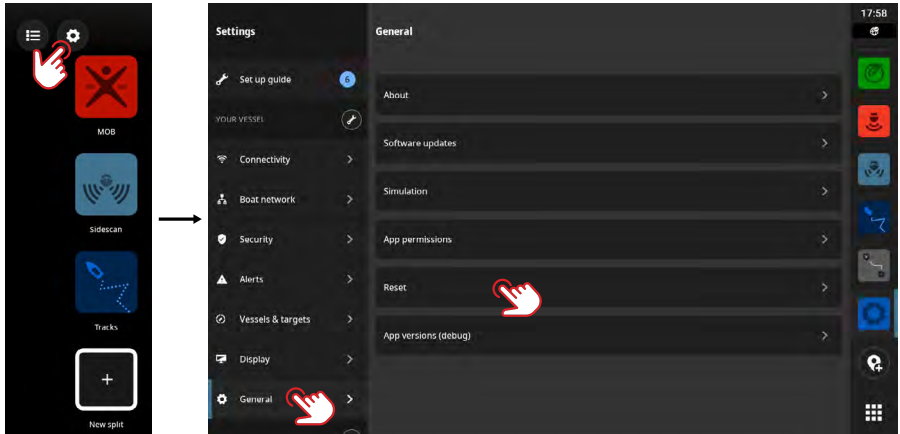
Use to manage your Simrad® account, backups and more.

Preference

Use to manage language and country, date and time, navigation, and units of measure.

Restore factory settings

Use the **Reset** option to restore your display unit to the factory default settings.



→ *Note: All personalized settings and content are deleted, including waypoints, routes and tracks.*



©Reg. U.S. Pat. & Tm. Off, and ™ common law marks.
Visit www.navico.com/intellectual-property to review
the global trademark rights and accreditations for
Navico Holding AS and other entities.

www.simrad-yachting.com