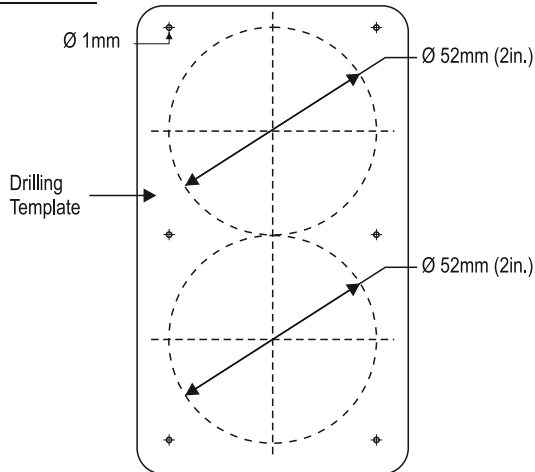
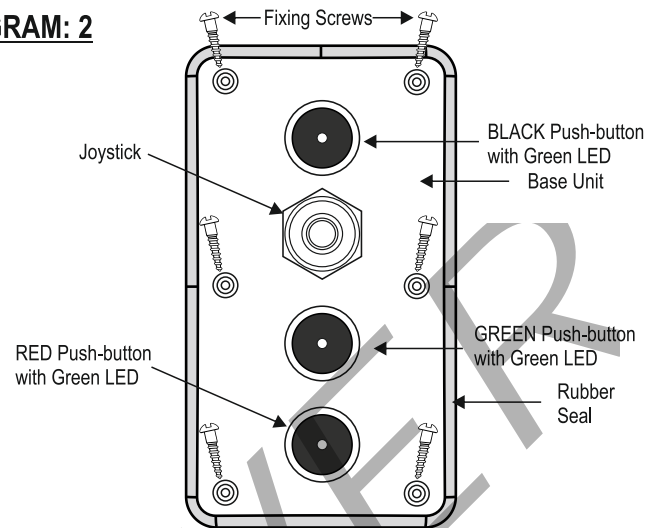


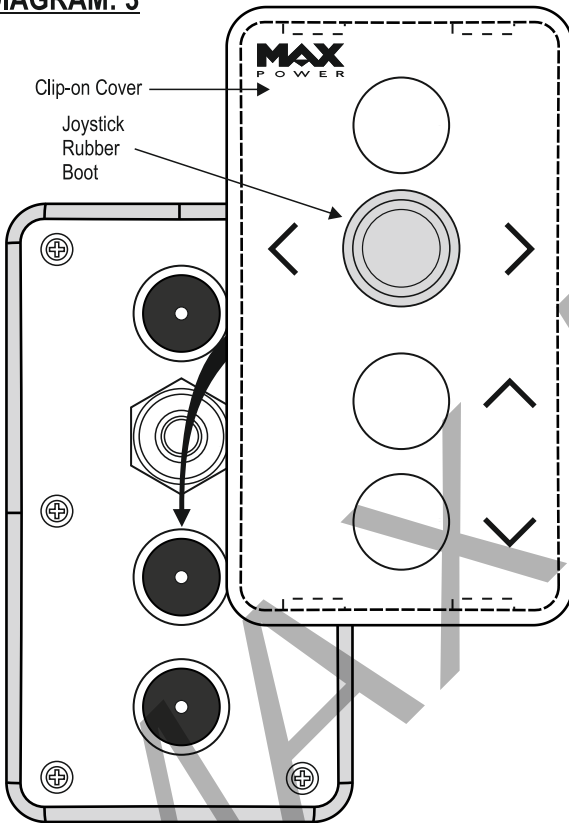
**DIAGRAM: 1**



**DIAGRAM: 2**



**DIAGRAM: 3**



## INSTALLATION GUIDELINES

### Diagram: 1

- 1.1) Stick drilling template in desired mounting position.
- 1.2) Drill the two 52 mm diameter holes using a holesaw.
- 1.3) Place panel in holes and mark the 6 fixing holes.
- 1.4) Remove panel and drill the six 1 mm diameter fixing holes.

### Diagram: 2

- 2.1) Make sure that rubber seal is placed on the base column.
- 2.2) Wire and/or plug unit to the control circuit.
- 2.3) Position base so that the joystick is at the top and the "Red" button at the bottom.
- 2.4) Fix base unit with the six fixing screws as supplied with unit.

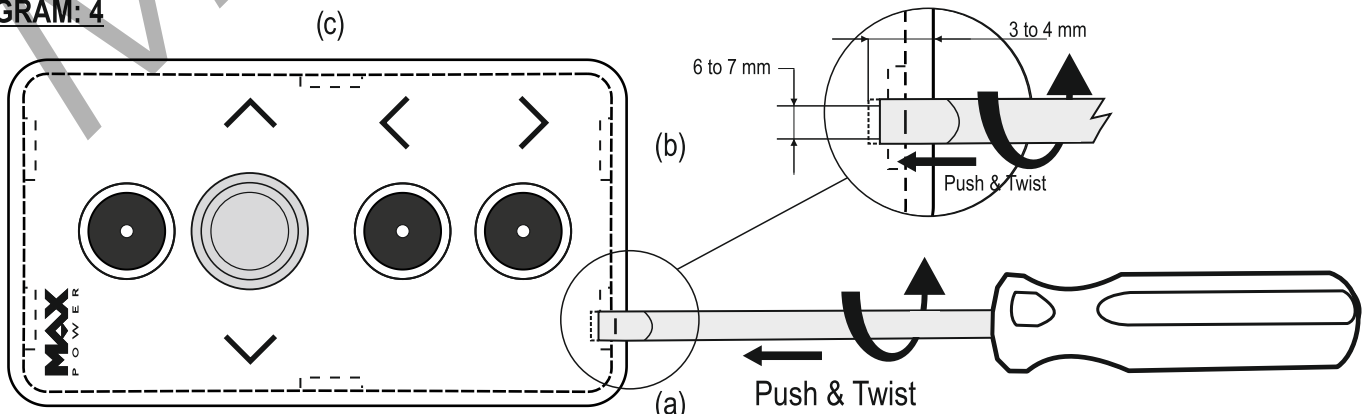
### Diagram: 3

- 3.1) Only when totally finished and satisfied with wiring and positioning of the unit, clip-on the face panel/cover.
- 3.2) Make sure that the transparent waterproof button covers are placed properly.
- 3.3) When clipping the face panel/cover into place, leave the joystick rubber boots inserted into the clip-on cover. **Make sure that the joystick rubber boot is placed properly without being stretched.** Push down well once in place.

### Diagram: 4

- 4.1) To remove the clip-on cover slide a flat headed screwdriver, with 6-7 mm wide tip, between the clip-on cover and the dashboard at position (a), (b) and then (c) and twist the tip slightly. Push in the tip of the screwdriver at least 3 to 4 mm before twisting it.

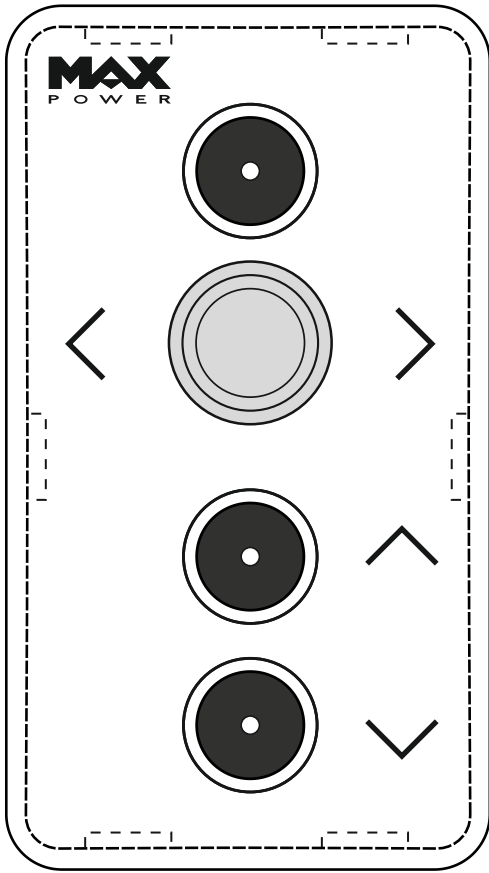
**DIAGRAM: 4**



# CONTROL PANEL INSTALLATION GUIDELINES

318206: Joystick VIP&Retract Black - 318224: Joystick VIP&Retract Gray

318226: Joystick for hydraulic retractable thrusters R300 & R450



BLUE  
BROWN  
YELLOW  
BLACK  
WHITE  
RED

ORANGE  
PURPLE  
(Blank)  
GREY  
GREEN  
(Blank)

**6 ways male WAGO**

Cable	Operation
Blue	Right Position
Brown	Left Position
Yellow	Buzzer (-)
Black	Switch's LED - Button
White	Switch ON-OFF
Red	Power supply positive + Buzzer (+)

Cable	Operation
Orange	Green Button UP (ON-OFF)
Purple	Green Button (UP) LED
(Blank)	
Grey	Red Button DOWN (ON-OFF)
Green	Red Button (DOWN) LED
(Blank)	