



YACHTS FOR SALE

**32 METRI**

YEAR  
**2022**

LENGTH  
**32.00 m**

  
**AZIMUT**  
YACHTS  
MONTENEGRO

YEAR  
2022LENGTH  
32.00 m

VAT NOT PAID | WITHOUT OPTIONS

32 METRI

By request

Length overall	32.00 m
Beam overall	7.30 m
Draft	1.89 m
Material	GRP
Cabines	5 + 3 crew
Head compartments	6 + 3 crew
Engine	2 x MTU 16V 2000 M86 2.200 HP
Fuel capacity	16000 l
Water capacity	2900 l
Max speed	27.00 knots
Cruising speed	21.00 knots
Range	1100 nm
Location	Italy

The company is not liable for validity of the information provided by the yacht-owner (images, specification of the yacht, list of equipment installed, its operability, engine hours, legal aspects). Actual engine hours are indicated at the moment of initial information placement and gets further periodically updated. Detailed information and characteristics will be provided on buyer's request and indicated in the contract.





Exterior Azimut Grande 32 METRI

Exterior Azimut Grande 32 METRI







Exterior Azimut Grande 32 METRI

Exterior Azimut Grande 32 METRI







Exterior Azimut Grande 32 METRI

Exterior Azimut Grande 32 METRI







Exterior Azimut Grande 32 METRI

Exterior Azimut Grande 32 METRI







Exterior Azimut Grande 32 METRI

Helm station on flybridge





Dining area on flybridge

Relaxing area on aft flybridge







Relaxing area on aft flybridge

Flybridge





Bow lounge area

Cockpit







Aft beach club

Main helm station





Main helm station

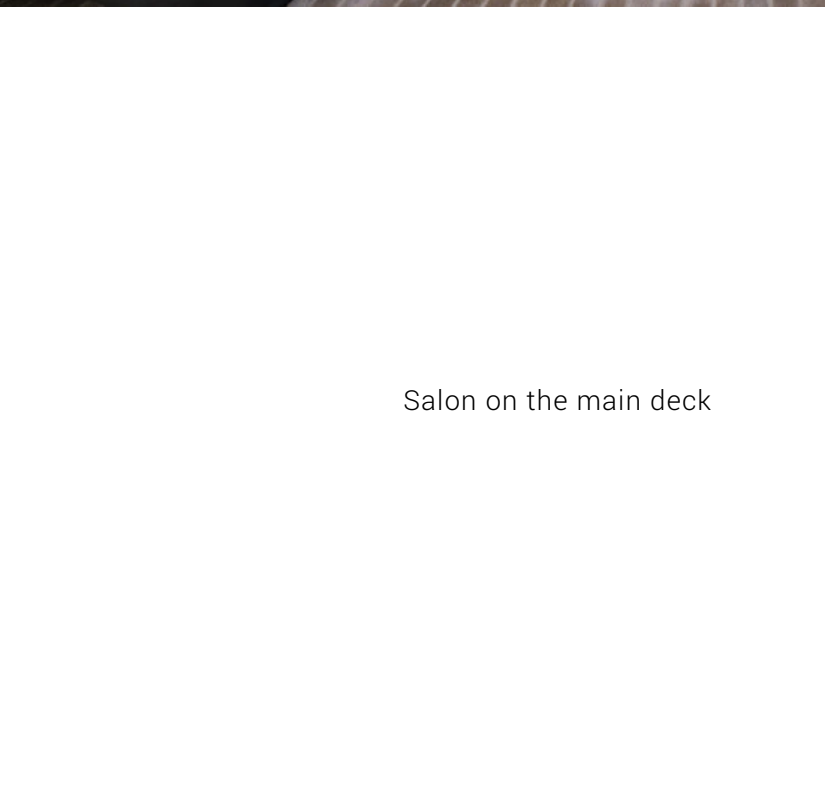
Salon on the main deck







Salon on the main deck

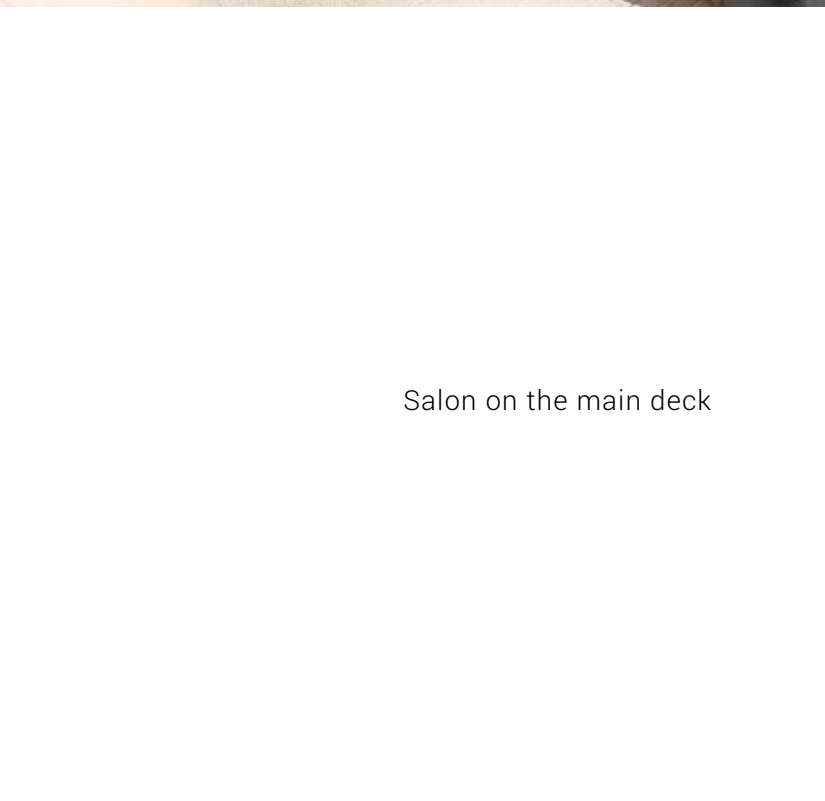


Salon on the main deck





Salon on the main deck



Salon on the main deck







Salon on the main deck



Salon on the main deck



Salon on the main deck

Salon on the main deck







Interior details

Dining area





Dining area

Galley







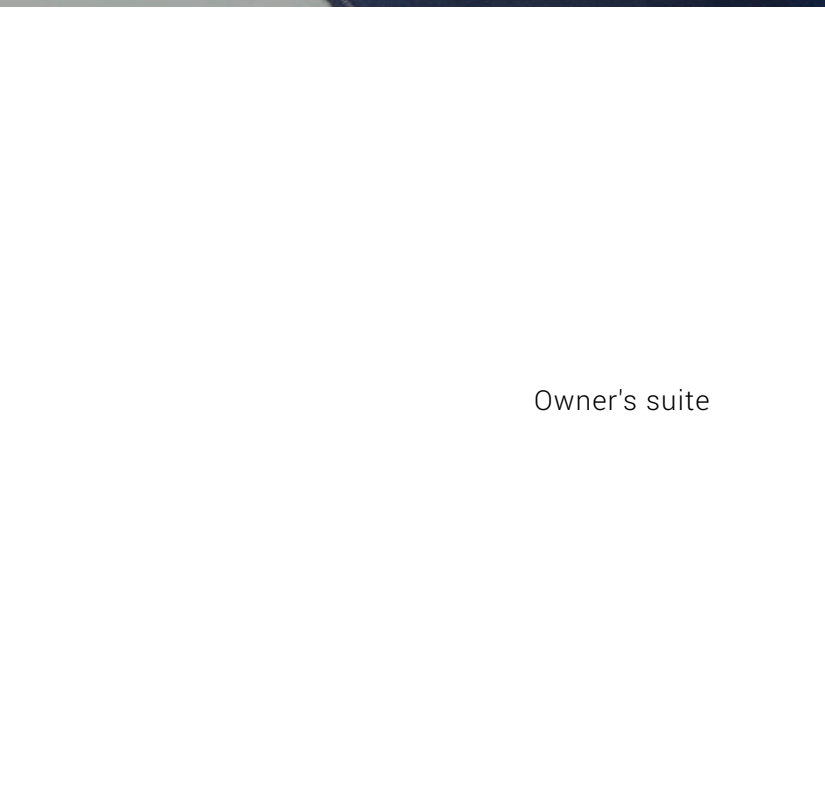
Owner's suite

Owner's suite





Owner's suite



Owner's suite







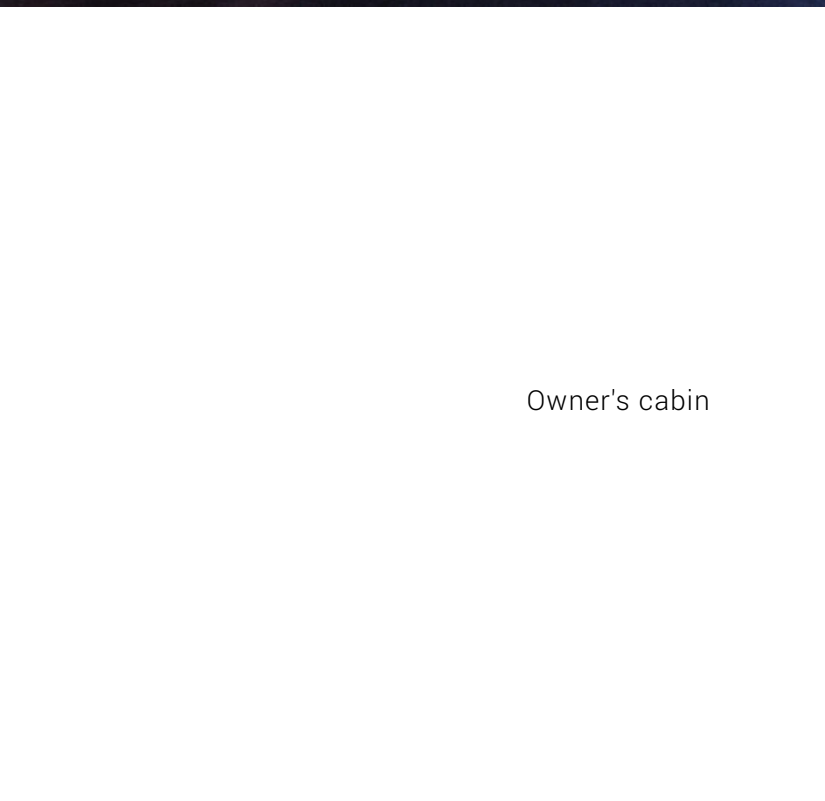
Owner's suite

Owner's suite





Owner's suite



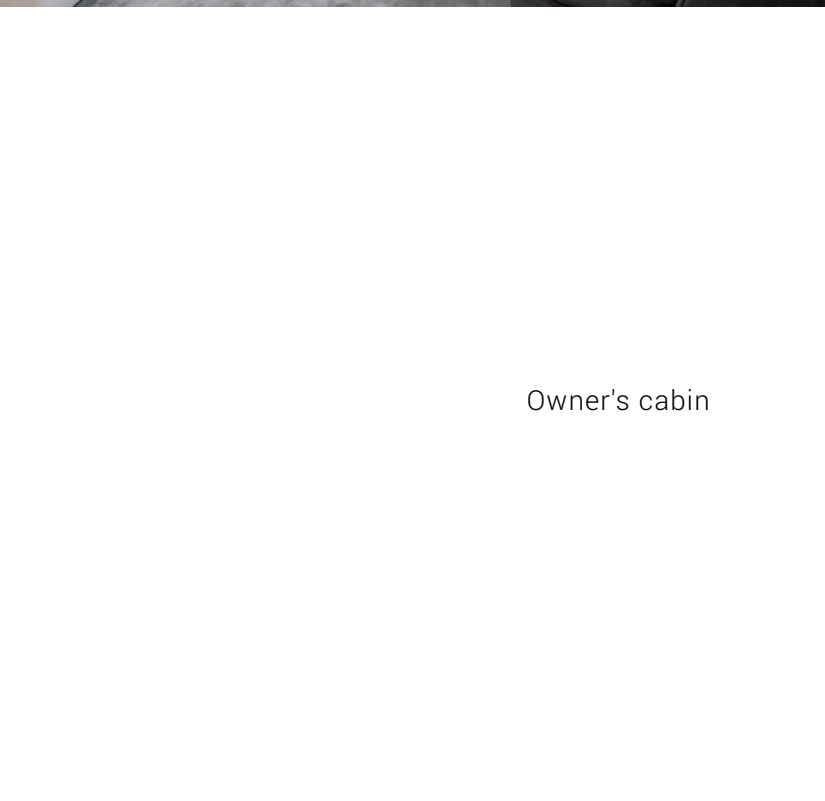
Owner's cabin







Owner's cabin



Owner's cabin





Vanity table in owner's cabin

Owner's head







Steps to lower deck

Corridor





Two VIP cabins

VIP cabin on the port side







VIP cabin on the port side

VIP cabin on the port side





VIP cabin on the starboard side

VIP head on the port side



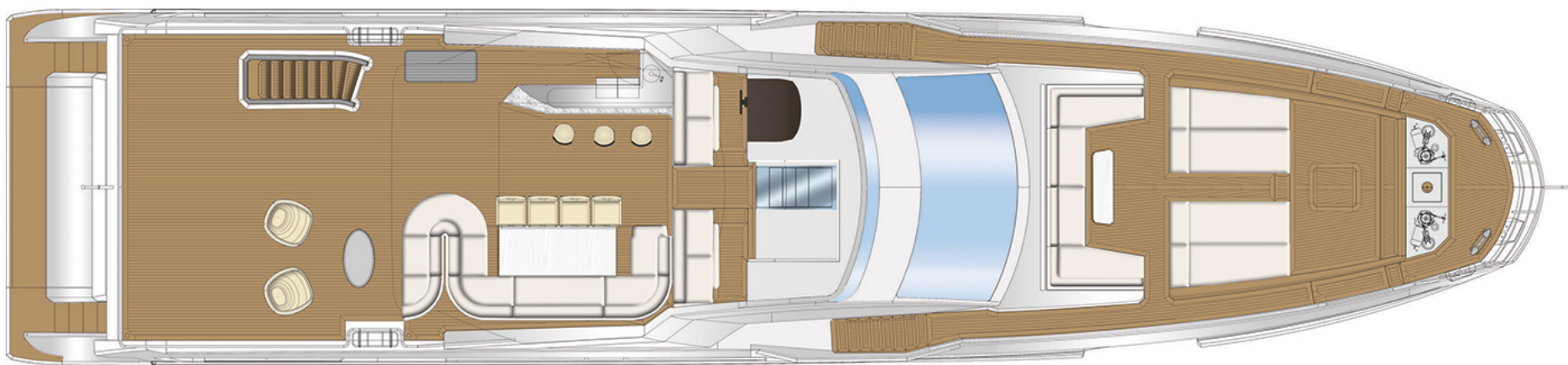




Exterior Azimut Grande 32 METRI

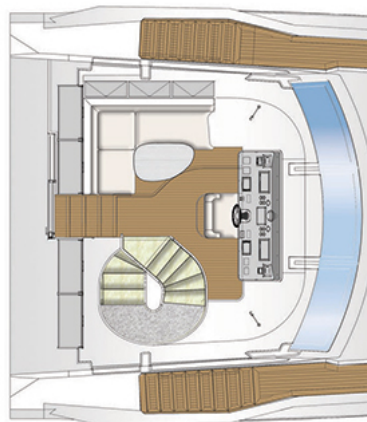
Exterior Azimut Grande 32 METRI



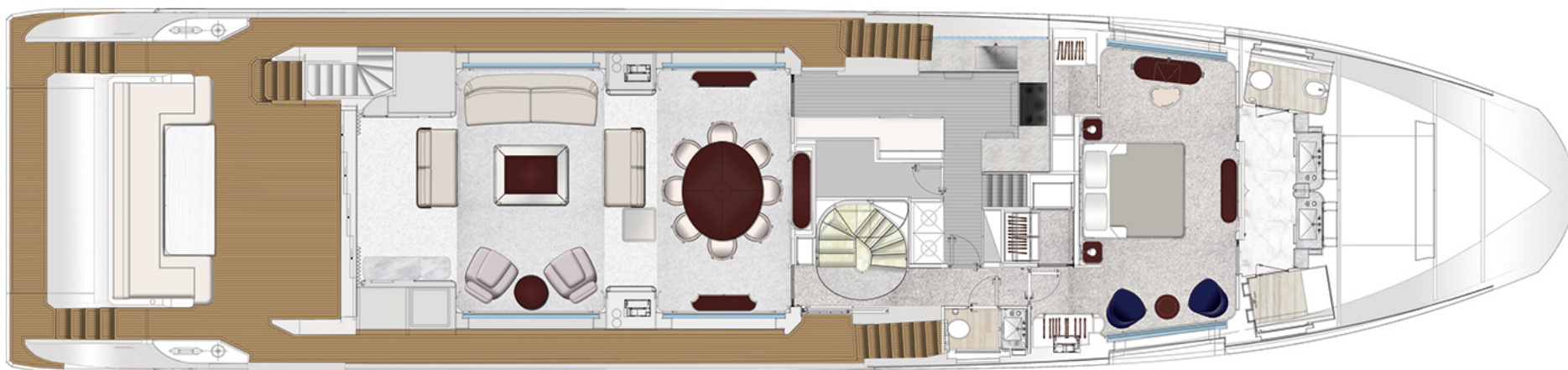


Flybridge



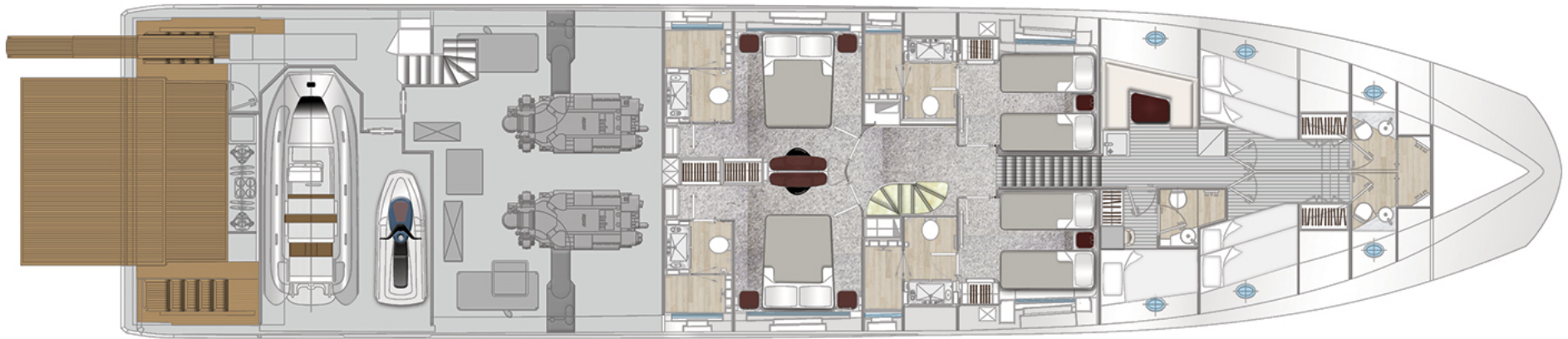


Rised Pilot House



Main deck





Lower deck

32 METRI

YEAR  
2022

LENGTH  
32.00 m

VAT NOT PAID | WITHOUT OPTIONS

By request

## SPECIFICATIONS

Gross tonnage	218 t	Length overall	32.00 m
Beam overall	7.30 m	Draft	1.89 m
Material	GRP	Berths	10 + 5 crew
Cabines	5 + 3 crew	Head compartments	6 + 3 crew
Engine	2 x MTU 16V 2000 M86 2.200 HP	Fuel capacity	16000 l
Water capacity	2900 l	Grey water capacity	3000 l
Max speed	27.00 knots	Cruising speed	21.00 knots
Range	1100 nm	Displacement	142.00 t
Interior designer	Achille Salvagni Architetti	Exterior styling & concept	Stefano Righini
Builder	Azimut Yachts (Италия)	Keel	D2P Displacement to Planing

The company is not liable for validity of the information provided by the yacht-owner (images, specification of the yacht, list of equipment installed, its operability, engine hours, legal aspects). Actual engine hours are indicated at the moment of initial information placement and gets further periodically updated. Detailed information and characteristics will be provided on buyer's request and indicated in the contract.



32 METRI

YEAR  
2022LENGTH  
32.00 m

VAT NOT PAID | WITHOUT OPTIONS

By request

## STANDART SPECIFICATION

## Details of the hull

The structural project of the hull has been carried out according to the High Speed Craft Classification and has been approved by R.I.Na. according to the "Rules for the Classification of Yachts". VINYLESTER RESIN is used for the first coats of the hand laid-up lamination below the water line. This kind of resin is extremely effective in preventing osmosis thanks to its chemical and physical characteristics. Worldwide acknowledged quality isophthalic resin is used for all the stages of the hand laid-up lamination process. High quality PVC with outstanding mechanical peculiarities is used for hullsides, main deck and superstructure lamination with sandwich. Engine room and collision bulkheads are laminated in sandwich. All other internal bulkheads are using advanced composite materials.

## Engines systemsMain engines

- 2 MTU 16V 2000M84. Diesel engines 16V cylinders , with the following main characteristics :
  - MCR: 1630 kW @ 2450 RPM
  - Single piston displacement : lt. 2,23
  - Stroke: 156 mm
  - Bore: 135 mm
  - Spec. consumption @ M.C.R.: 208 g/kWh (tolerance + 5%, ISO 3046 conditions; L.H.V. Fuel = 42800 kJ/kg)
  - Displays: MTU Blue Vision Basic.

## Gearboxes

- 2 ZF 3060 V, reduction rate 3:1, installed on resilient mountings.

## Transmission

- V-Drive with universal joint.

## Shafts

- Model : BCS
  - Marinox 17, 110 mm, supported by brass stands and tubes.
- Fluiten shaft seals, or equivalent.

## Propellers

- Number of blades: 5
  - Diameter: 1150 mm,
- Material: NiBrAl.

YEAR  
2022LENGTH  
32.00 m

VAT NOT PAID | WITHOUT OPTIONS

32 METRI

By request

**SteeringRudders**

- Model : BCS (hydraulic steering)
- Rudderholes in brass and pole of the rudders in Marinox 17. Bar and yoke in carbon steel.
- Rudders in Aisi 316, area 0.42 sqm.

**Flaps**

- Model : BCS MY4 (Hydraulic)
- Tab size: 980 X 600 mm.

**Intruder**

- Fixed , AISI316L

**Bow thruster**

- Model : CMC 16" BTM 40 H System : hydraulic.
- Thrust : 550 kgf

**Mooring**

- Two 105 Kg high holding power Posidonia anchors in galvanised steel.
- Two built-in stainless steel bow protections.
- Main data: electric engine power: 4000W – 230V/50-60Hz/triphas
- Main data: electric engine power: 2200W – 230V/50-60Hz/triphas
- Six fairleads (two on aft, four on bow).
- Two pop-up cleats on the swim platform.
- 100m studless chains in galvanised steel (13mm of diameter).
- Two anchor winches in the bow area (model: MZ Sun).
- Two mooring winches in the aft cockpit (model: MZ Aran)
- Six cleats (two on aft, four on bow).
- Two fairleads with integrated cleats amidships.

**External layoutFlybridge**

- The wide flybridge is accessible through the external staircase in the aft cockpit with teak steps and though the internal staircase from the wheelhouse.



32 METRI

YEAR  
2022LENGTH  
32.00 m

VAT NOT PAID | WITHOUT OPTIONS

By request

- Windscreen in plexiglass and steel.
- GRP pilot seat for two people on starboard side, with cushions and stainless steel footrest.
- - main engines controls,
- - navigation instruments,
- - forward anchor winches control,
- - horn control,
- - fire extinguisher pump control (chain wash),
- L-shaped sofa in the forward portside corner, with cushions and stainless steel footrest.
- Cabinet for storage on starboard side, under the pilot seat.
- Table in teak in front of the sitting area on portside, with two legs in stainless steel.
- GRP roll bar including:
  - - antennas,
  - - Jabsco searchlight
- U-shaped stainless steel handrails on sides of the flybridge and around the area of the staircase to main deck.
- Covers for sofas, tables and console.
- One coffee table in teak.

- GRP hard top with electric awning (soft top).
- Pilot console on starboard side including:
  - - steering wheel,
  - - main engines and gear boxes gauges,
  - - bow thruster control,
  - - navigation lights control,
  - - search light control,
  - - manouvering intercom.
- Bar unit on starboard side with countertop in granite, floating top in teak, equipped with sink, faucet, trash bin and appliances
- L-shaped sofa on portside with cushions and storage trays underneath.
- Five teak folding chairs.
- - navigation lights,
- - horn,
- - Two chrome "95 RPH" logos.
- Drainage holes.
- Antiskid flooring.
- Three loungers.
- Six decorative cushions 35X50 cm.

#### Transom

The company is not liable for validity of the information provided by the yacht-owner (images, specification of the yacht, list of equipment installed, its operability, engine hours, legal aspects). Actual engine hours are indicated at the moment of initial information placement and gets further periodically updated. Detailed information and characteristics will be provided on buyer's request and indicated in the contract.

32 METRI

YEAR  
2022LENGTH  
32.00 m

VAT NOT PAID | WITHOUT OPTIONS

By request

- Hydraulic transom door with teak-laid flooring (8mm.)
- Launching and recovering system for tender in the garage. Max capacity: 1,000 Kg.
- Electro-hydraulic retractable gangway (Pincraft) in stainless steel and teak on transom.
- Shore power connection and TV/telephone inlets placed inside cabinet on transom.
- Black water shore discharge system inside cabinet on transom.

**Cockpit**

- Teak-laid decking (8 mm)
- C-shaped settee in GRP with cushions.
- Stainless steel handrail on both sides of the settee.
- Four teak folding chairs.
- Bar cabinet in GRP with appliances (see 25. Appliances) and sink.
- Two stainless steel gates to access the swim platform.
- Covers for the settee and the table.
- Drainage holes.

**Sides**

- Chrome Azimut logo on each side of superstructure.
- Stainless steel handrail on bulwark.

- Integrated garage designed to host a diesel tender.
- Structural staircases with teak steps on both sides of the transom to access the swim platform. Stainless steel handrail on the external side of each staircase.
- Manual swim ladder in stainless steel and teak.
- Fresh water shore connection, shower, fresh water outlet inside cabinet on transom.
- Name of the yacht and port of registry in stainless steel letters on transom.
- Integrated staircase to the flybridge in GRP with teak steps (8 mm), courtesy lights and stainless steel handrail.
- Cockpit table in teak with two legs in stainless steel.
- Control panel for the gangway, the garage door and the launching/recovering system for tender placed inside the handrail on the side of the settee.
- Salon door in tempered glass and stainless steel divided into two sections.
- GRP cabinet on portside, in the superstructure, with fire hose, nozzle connected to fire main, controls for engine room fixed fire fighting equipment, emergency stop controls.
- Watertight halogen lights on the ceiling.
- N.4 decorative cushions 55X55 cm.
- One GRP pillar from bulwark to superstructure on each side.

The company is not liable for validity of the information provided by the yacht-owner (images, specification of the yacht, list of equipment installed, its operability, engine hours, legal aspects). Actual engine hours are indicated at the moment of initial information placement and gets further periodically updated. Detailed information and characteristics will be provided on buyer's request and indicated in the contract.



32 METRI

YEAR  
2022LENGTH  
32.00 m

VAT NOT PAID | WITHOUT OPTIONS

By request

- Two fuel fillers, one on each side of the superstructure, inside adequate cabinet.
- Watertight halogen lights on the ceiling and courtesy lights.
- Two water mist separators (Munters) installed in way of the engine room ventilation air grids.
- Weatertight door on starboard side of the superstructure for direct access to the main deck foyer.

**Bow**

- Chain locker with drainage.
- Storage area for fenders integrated in the forward area of the chain locker
- One coffee table in teak with leg in stainless steel.
- N.4 decorative cushions 40X40 cm.
- Fresh water connection.
- Cable controls for anchor winch and chain washer.
- Three window wipers for forward windscreen.
- Teak-laid decking (8 mm.).

**Internal layoutMain DeckSalon/dining area**

- One cabinet with shelves, storage and A/V equipment next to the entrance door.
- One low cabinet with storage on each side between salon and dining area.

- Two fresh water intakes, one on each side of the superstructure, inside adequate cabinet.
- Windows in high thickness tempered glass (Gray Europe), bonded to the superstructure without metal frames.
- Weatertight door on aft portside of the superstructure to access the engines room.
- Weatertight door on portside of the superstructure for direct access to the galley.
- Teak-laid decking (8 mm.).
- Drainage holes.
- Chain washer feed by fire main.
- C-shaped sofa integrated in the superstructure, with cushions and backrest.
- Covers for the teak tables and sofa.
- Emergency escape hatch from the Master cabin.
- Intercom
- Lights in the mooring area.
- Black mesh covers for the wheelhouse forward windscreen and the wheelhouse side windows.
- Drainage holes.
- 40" TV on starboard side with electric mechanism pivoting from the ceiling.

32 METRI

YEAR  
2022LENGTH  
32.00 m

VAT NOT PAID | WITHOUT OPTIONS

By request

- One storage cabinet on each side of the dining area for dishware, glassware and cutlery (sets for 12 people). Portside cabinet is loose, starboard side cabinet is integrated in the furnishing.
- Two sliding doors on the bow bulkhead to access the galley and the main deck foyer.
- One 3-seater sofa on portside.
- One ottoman table with integrated lacquered wood trays.
- N.3 decorative cushions (40x30 cm.).
- Lights, curtains and upholstery.

**Pantry**

- Dinette with two seats and table.
- Lights, curtains and upholstery.

**Galley**

- The galley is equipped with: appliances, two sinks in stainless steel, countertop in granite, hanging cabinets and cabinets with shelves.

**Main deck foyer**

- Placed on the starboard side on the main deck, the main deck foyer leads to: dining area, wheelhouse, lower deck accommodation, master cabin, day head.

**Day head**

- Mirror, shelves and cabinet under the sink.
- Sink.

- One storage cabinet in the middle of the bow bulkhead.
- One decorative panel with wallpaper in the middle of the bow bulkhead.
- Dining table with legs in lacquered wood bases and wooden top. Eight dining chairs.
- Two 2-seater sofas on aft and bow of the salon.
- Two armchairs and one coffee table on portside.
- N.4 decorative cushions (40x40 cm.).

- Storage cabinets on portside.

- Staircase to the crew quarters.
- Lights, curtains and upholstery.

- Cabinet for air conditioning on starboard side.
- Lights, curtains and upholstery.

- TECMA WC, model Privilege.



32 METRI

YEAR  
2022LENGTH  
32.00 m

VAT NOT PAID | WITHOUT OPTIONS

By request

- Tap and toilet accessories.

**Master cabin**

- Double bed with storage underneath, mattress in latex, two pillows, bedspread and two pillow covers.
- Two storage cabinets on the sides.
- N.2 club chairs with coffee table on portside.
- Two large windows on the sides.
- N. 5 decorative cushions (40x40 cm.).

**Master head**

- TECMA WC, model Privilege.
- Sink.
- Shower unit with column and central rain shower on ceiling, teak grating, teak bench and glass door.
- Air extraction.
- Lights, curtains and upholstery

**Master closet**

- Hanging bars with lighting.
- Storage cabinet with drawers.
- Raised pilot house

- Lights and upholstery.

- Two nightstands with drawer and USB-type socket.
- Two closets with shelves on the bow bulkhead, on port and starboard side.
- One storage cabinet on the bow bulkhead.
- N.5 decorative panels in wallpaper above the headboard.
- 32" TV on the bow bulkhead, behind mirror.
- Lights, curtains and upholstery.

- Bidet.
- Tap and toilet accessories.
- Mirror, shelves and cabinet with integrated towel bar in stainless steel under the sink.
- Two open-cabinets on the sides, with shelves and fiddles.
- Opening porthole.

- Safe box.
- Lights, curtains and upholstery.

32 METRI

YEAR  
2022LENGTH  
32.00 m

VAT NOT PAID | WITHOUT OPTIONS

By request

- Raised pilot house console equipped with:
- - Main engines and gear boxes gauges,
- - Navigation electronics,
- - Wheel upholstered in leather,
- Navigation (navigation lights, horn)
- fuel transfer pump,
- storage fuel tank level,
- sewage/grey water pump,
- Bilge system (bilge pump display and controls, main bilge pump control)
- on/off switch and overload alarm for generator 1,
- on/off switch for the shore power connection,
- gauges (tension, Amp, kW and frequency) for shore power.
- gauges (tension, charging and discharging Amp) for service batteries,
- gauge (tension) for generator starter batteries.
- fire alarm panel with smoke detectors placed as follows (saloon, dining area, galley, raised pilot house, master cabin, lower deck lobby, crew corridor, engine room)
- Staircase to flybridge.
- Lights, curtains and upholstery
- - Main engines controls,
- - Bow thruster controls.
- - Intercom controls,
- - 12" touch-screen monitoring system for (220Vac – 24Vdc system: window wipers, engine room fans, hydraulic steering)
- Tanks:
- daily fuel tank level,
- fresh water tank level,
- sewage/greywater tank level
- 220 Vac sources:
- on/off switch and overload alarm for generator 2,
- gauges (tension, Amp, kW and frequency) for diesel generators.
- 24Vdc sources:
- gauge (tension) for main engines starter batteries,
- safety systems:
- Leaning bar.
- L-shaped sofa.
- Reading light.

**Lower DeckLower deck lobby**

The company is not liable for validity of the information provided by the yacht-owner (images, specification of the yacht, list of equipment installed, its operability, engine hours, legal aspects). Actual engine hours are indicated at the moment of initial information placement and gets further periodically updated. Detailed information and characteristics will be provided on buyer's request and indicated in the contract.



32 METRI

YEAR  
2022LENGTH  
32.00 m

VAT NOT PAID | WITHOUT OPTIONS

By request

- Staircase to lower deck with steps in backlit onyx, balustrade in lacquered wood and wooden handrail,
- Cabinet with electrical panel on bow bulkhead.
- One handrail in stainless steel on portside and bow bulkhead.

**Guest cabins (x2)**

- Two single beds with drawers and storage underneath, with two latex mattresses, two pillows, two bedspreads and two pillow covers.
- Wardrobe with hanging bar, shelves and drawers.
- Opening porthole.
- Lights, curtains and upholstery.

**Guest heads**

- TECMA WC, model Privilege.
- Tap and toilet accessories.
- Mirror, shelves and cabinet with integrated towel bar in stainless steel under the sink.
- Air extraction.
- Lights, curtains and upholstery.

**Vip cabin (x2)**

- Double bed with drawers and storage underneath, one latex mattress, two pillows, one bedspread and two pillow covers.

- Storage cabinet under the stairs.
- Storage cabinet with shelves on portside.
- One decorative panel on aft.
- Lights, curtains and upholstery.
- N.4 decorative cushions (40x40 cm.)
- Nightstand between the beds with drawer and USB-type socket.
- One rectangular window on hull-side.
- 22" TV on the bow bulkhead, behind mirror.
- Sink.
- Shower unit with column and central rain shower on ceiling, wooden grating and glass door.
- Storage recess with shelves and fiddles.
- Opening porthole.

32 METRI

YEAR  
2022LENGTH  
32.00 m

VAT NOT PAID | WITHOUT OPTIONS

By request

- Two nightstands with drawer and USB-type socket.
- Cabinet with electric board.
- One stool.
- Opening porthole.
- N.4 decorative cushions (40x40 cm.)

**Vip head**

- TECMA WC, model Privilege.
- Tap and toilet accessories.
- Mirror, shelves and cabinet with integrated towel bar in stainless steel under the sink.
- Air extraction.
- Lights, curtains and upholstery.

**Lower Deck – Crew Quarters**

- Access from the galley through a staircase.

**Aft crew cabin**

- Two bunk beds, with two foam mattresses, two pillows, two bedspreads and two pillow covers.
- Wardrobe with shelf and hanging bar.

**Bow crew cabin**

- One bed, with foam mattress, pillow, bedspread and pillow cover.

- Wardrobe with hanging bar, shelves and drawers.
- One beauty desk with opening top.
- One large window on the hull-side.
- 26" TV on the inboard-side bulkhead, above the beauty desk, behind mirror.
- Lights, curtains and upholstery.

- Sink.
- Shower unit with column and central rain shower on ceiling, wooden grating and glass door.
- Storage recess with shelves and fiddles.
- Opening porthole.

- Drawers and storage underneath the lower bed.
- Opening porthole.
- Lights, curtains and upholstery.

32 METRI

YEAR  
2022LENGTH  
32.00 m

VAT NOT PAID | WITHOUT OPTIONS

By request

- Storage underneath the bed.
- Wardrobe with shelf and hanging bar.

**Crew head**

- Tecma WC.
- Wooden grating floor.
- Tap and toilet accessories.
- Opening porthole.

**Captain's cabin**

- One bed, with foam mattress, two pillows, one bedspread and two pillow covers.
- Opening porthole.
- Lights, curtains and upholstery.
- Tecma WC.
- Wooden grating floor.
- Tap and toilet accessories.
- Opening porthole.

**Electrical systemMain characteristics**

- The whole system has been carried out according to the I.E.C. an C.E.I. rules.
- - 220 V a.c. triphase, 50 Hz, for power circuits,
- - lights in the engines room,

- Opening porthole.
- Lights, curtains and upholstery.

- Shower.
- Sink.
- Cabinet with shelves.
- Lights, curtains and upholstery.

- Drawers and storage underneath the bed.
- Wardrobe with drawers and hanging bar.
- Captain's head
- Shower.
- Cabinet Sink.
- Cabinet with mirror and shelves.
- Lights, curtains and upholstery

- The voltages on board are the following:
- - 220 V a.c. single phase, 50 Hz, for:



32 METRI

YEAR  
2022LENGTH  
32.00 m

VAT NOT PAID | WITHOUT OPTIONS

By request

- - lights in the technical areas,
- - 24 V a.c. single phase, 50 Hz, for:
- - internal lights;
- - emergency circuits,
- - small users,
- - navigation electronics.
- Electrical wiring is constructed with no flammable materials and with proper cross section related to the use.
- - One conduit from roll bar (portside) to the technical area under the wheelhouse console;
- Secondary electrical panels are installed in all areas of the yacht.
- copper or aluminum with proper cross section.
- The ground system is the following:
- - ground system for electrical circuits, which joins all control panel

**Power sourcesGenerators**

- One 45 kw generator and one 33kW generator, 220V, 50Hz, triphase in engines room, installed on silent blocks.

**Shore power**

- One 125A shore power connector on transom, connected to an insulation transformer 40kVA triphase with 400Vac input

- - sockets;
- - external lights,
- - 24 V c.c. with grounded negative for:
- - spotlights, headboards and courtesy lights,
- - navigation lights,
- Electrical wiring is housed in metal or self-extinguishing closed PVC conduits.
- Additional empty conduits (40mm of diameter) in the following areas:
- - One conduit from the roll bar (starboard side) to the A/V rack cabinet in salon;
- - One conduit from the A/V rack cabinet in salon to lower deck accommodation.
- The main electrical panel is installed in the engine room.
- All equipment have ground junctions with adequate cords and braiding of
- The ground system is integrated to the cathodic protection system and is made up by a ring of copper straps going all around the yacht, connected to two zincs on transom.
- - ground system for machinery, sea water intakes, etc..;
- grounds and electrical equipment grounds.
- Sound shield box, control panel and 12V c.c starter.
- Remote starter

32 METRI

YEAR  
2022LENGTH  
32.00 m

VAT NOT PAID | WITHOUT OPTIONS

By request

**Batteries and chargers**

- Group of 24V gel batteries 1000Ah, for service/emergency.
- Two groups of 24V gel batteries of 240 Ah for engine electronics.
- One 75A 24V DC MasterVolt automatic battery charger for service batteries.
- One 75A 24V DC backup MasterVolt battery charger for service batteries (switch to use it for the emergency batteries)
- During the navigation main engines' alternators will charge their own batteries

**Lighting system and outlets**

- The engines room lighting is made by IP 65 lamps and neon lights
- - lights on ceiling: LED spotlights. All controls are close to entrance door and at the nightstand;
- - 220V outlets;
- - ceiling lights (LED spotlights) with controls in various places;
- - 220V outlets.
- - Ceiling lights (LED spotlights) with controls in various places;
- Dimmer controls for all internal ceiling lights (excluding galley, corridor, lobby, crew area, wheelhouse -red light -, and heads).

**Electronics**

- Due to continuous updating on the electronics field, the above electronic package may change at any time.

- Two Groups of 24V gel batteries of 2 x 240 Ah for engine starter.
- Two groups of 12 V gel batteries of 2 x 120 Ah for generator starter.
- One 75A 24V DC MasterVolt automatic battery charger for emergency batteries.
- One 50A 24V DC MasterVolt automatic battery charger for engine starter batteries.
- One 35A 12V DC MasterVolt automatic battery chargers for generator starter batteries.
- During the navigation gen sets' alternators will charge their own batteries

- Lighting of cabins is done through LED spot lights. Each cabin is provided with the following:
  - - reading lights (LED lights) with controls at the nightstand;
  - - LED lights on ceiling in the head with controls close to the door;
- Lighting of the internal main deck is defined as follows:
  - - ceiling lights (LED spotlights) in the head compartments with controls close to the door;
- Lighting of the galley and crew quarters is defined as follows:
  - - 220V outlets.

32 METRI

YEAR  
2022LENGTH  
32.00 m

VAT NOT PAID | WITHOUT OPTIONS

By request

**Hull**

- 1 x Raymarine BF44 VL Tridata transducer with dedicated Raymarine ITC-5 interface.

**Wheelhouse**

- 2 x Multifunction Raymarine 12" displays E 125.
- 1 x Raymarine P70R autopilot display with Raymarine EV-1 COMPASS.
- 1 x VHF Raymarine RAY 260E DSC CLASS D.
- 1 x MULTIFUNCTION RAYMARINE A65.
- 1 x Raymarine ACU-300 autopilot.
- 1 x White star BW3/3-142 COMPASS.

**Flybridge**

- 1 x Multifunction Raymarine 9" DISPLAY E 95.
- 1 x Raymarine P70R autopilot display.
- 1 x Zenith BZ1/3-143 compass.
- 1 x Pathfinder open array antenna HD Digital 48" 4KW.
- 1 x Raystar GPS antenna RS130.
- 1 x I70 analogue rudder display.
- 1 x Multifunction Raymarine A65.
- 1 x VHF Raymarine RAY 260E repeater.
- Roll bar
- 1 x Raymarine VHF antenna.
- Emergency helm station

**Communication system**

- Phone system with phone outlets in the following areas (PABX central unit and telephones are not included):
- - Master cabin;
- -Guest cabins;
- Maneuvering Intercom system with five stations:
- -Wheelhouse
- -Salon;
- -VIP cabins;
- -Captain's cabin.



32 METRI

YEAR  
2022LENGTH  
32.00 m

VAT NOT PAID | WITHOUT OPTIONS

By request

- -Control unit in wheelhouse;
- - Loudspeaker in the maneuvering area on bow;
- - Loudspeaker and earphones in engine room.

**Entertainment system**

- (Due to the continuous updating on the TVs and hi-fi field, the following entertainment system package may change at any time).

**Salon:**

- 40" LED TV Samsung UE40F8000
- Blue Ray player Sony BDPS590
- n.1 Promar PMS66 speaker

**Master cabin:**

- 32" LED TV Samsung UE32F6800
- Bose Lifestyle V35 – black -
- n.4 Promar PMS6 speakers

**VIP cabin (2):**

- 26" LED TV Samsung UE26EH4500
- n.2 Promar PMS6 speakers

**Guest cabins (2):**

- 22" LED TV Samsung UE22ES5400

- -Control unit on the flybridge;
- - Loudspeaker in aft cockpit.

- Ceiling pivoting system
- Bose Lifestyle V35 – black –
- n.4 Promar PMS6 speakers

- Blue Ray player Sony BDPS590
- n.1 Promar PMS66 speaker

- Blue Ray/CD/DVD player Yamaha E750

32 METRI

YEAR  
2022LENGTH  
32.00 m

VAT NOT PAID | WITHOUT OPTIONS

By request

- Blue Ray/CD/DVD player Yamaha E750

- n.2 Promar PMS6 speakers

**Crew mess:**

- Boss CD/DVD player

- n.2 Promar PMS6 speakers

**Crew cabins (3):**

- Boss CD/DVD player

- n.2 Promar PMS5 speakers

**Wheelhouse:**

- Boss M3.6 CD player

- n.2 Promar PMS5 speakers

**Aft cockpit:**

- Two JL 7" loudspeakers linked to salon stereo system, through an independent BOSE SA-3 amplifier with BOSE remote control

**Bow area:**

- Two JL 7" loudspeakers linked to salon stereo system, through an independent BOSE SA-3 amplifier with BOSE remote control

**Flybridge:**

- Four JL 7" loudspeakers linked to salon stereo system, through an independent BOSE SA-3 amplifier with BOSE remote control

**Fire alarm and safety system**

- Fifteen portable extinguishers in all the areas of the yacht as follows:
- - nr. 1 2kg powder extinguishers,
- Fire extinguisher system for the main engines:

- - nr. 3 2kg CO2 extinguishers,
- - nr. 11 1kg powder extinguishers.

32 METRI

YEAR  
2022LENGTH  
32.00 m

VAT NOT PAID | WITHOUT OPTIONS

By request

- - Manual control station, placed inside a cabinet located on aft portside of superstructure.
- - Connection to the electrical system for emergency stop of engines and generators and emergency switch-off of engine room fans/extractors and electrical pump for fuel transfer
- - Lower deck lobby
- - Galley
- - Main deck foyer

**Fuel system**

- One GRP day tank (2,400 lt – 633 gals) and two GRP storage tanks (9,600 lt – 2,534 gals)
- Fuel filling operation is carried through fuel fillers positioned on each side of the superstructure.
- Manual fuel pump (Gianneschi Excelsior 2) with a capacity of 24 l/min (6.3 gals/min), to transfer fuel among fuel tanks in emergency.
- AISI 304 piping.

**Black and grey water tanks**

- One GRP gray/black water tank, with a maximum capacity of 1,500 lt (396 gals) to collect water from showers and sinks, galley, washer/dryer, WCs and fan coil drip trays.
- Electrical pump 220V with 42 lt./min. (11 gals/min) max. flow rate.

- - Shut off of the ventilation and extraction ducts in engines room.
- - Shut off of the fuel valve at the day tanks.
- Fire extinguisher system: smoke detectors are placed in the following areas:
  - - Engine room area (2)
  - - Salon/dining area (2)
  - - Crew corridor
  - - Wheelhouse
- Each tank is provided with breather pipe and electric sensor for level monitoring.
- Fuel levels and their alarms are visible in wheelhouse and on the main electrical panel.
- Reversible electric pump (Gianneschi CP30 C1) with a capacity of 105 l/min (27,7 gals/min), to transfer fuel among fuel tanks. Controls on main electrical panel and on monitoring system in raised pilot house.
- Duplex RACOR filters on engines type 75/1000 MA
- Single RACOR filters on generators type 500 MA
- N.4 secondary collecting tanks (Johnson Pump cod. J09-13384) to collect the grey waters from heads and fancoil drip trays. Viking Power 32 pump to transfer the grey waters to the main tank.



32 METRI

YEAR  
2022LENGTH  
32.00 m

VAT NOT PAID | WITHOUT OPTIONS

By request

- Copper piping in engine room and PVC piping in the other areas of the yacht.

**Bilge system**

- The bilge system is made up by two parts: the main system, centralized with an automatic electric pump and a manifold, and a secondary one, with dedicated suctions in each compartment.

**Main bilge system**

- Centralized system with suction in each compartment connected to the main manifold positioned in engine room.
- Emergency suction in engine room connected to one of the main engines sea water intakes.

**Secondary bilge system**

- 24 V electrical pumps in engine room and in the bilges under the accommodation, maximum capacity 57 lt/min (14.5 gals/min).

**Fresh water system**

- System can be fed via a structural tank with a capacity of 2,000 lt (528 gals), via a shore connection, or via a water maker with nominal capacity of 180 lt./h. (Idromar MCJ3).
- N.2 Water heaters with 80 lt (21 gals) maximum capacity.
- One 24V fresh water spare pump (not installed) is supplied.
- Pressfitting piping in engine room and multilayer/pressfitting piping in the other areas of the yacht.

**Sea water system**

- 220 V electrical pump (Gianneschi ACM331-B), maximum capacity 140 lt/min (37 gals/min)

- Copper piping in engine room and PVC piping in the other areas of the yacht.

- High level sensors in each compartment with alarms in the wheelhouse.

- Plug for the shore connection in the aft.

- Two electrical pumps (one 220V and one 24V, model Gianneschi Jet4, capacity: 80 l/min – 21 gals/min) positioned in engine room pump water from tank to all users: washbasins, sinks, showers, electrical appliances, aft platform shower and washing deck hose.

- WC system is Tecma type, working with fresh water.

- One 220V fresh water spare pump (not installed) is supplied.

32 METRI

YEAR  
2022LENGTH  
32.00 m

VAT NOT PAID | WITHOUT OPTIONS

By request

- Four seawater intakes in bronze and two seawater intakes in fiberglass with valves and filters: two for general utilities, one (in fiberglass) for each main engine and one for each generator.
- Sea water fire system with electric pump (Gianneschi ACM331-B), 220V, 140 lt./min., (37 gals/min.) max. flow rate, placed in engine room, and emergency manual pump (Gianneschi Excelsior 5), 60 lt./min max. flow rate. The pumps are connected to two fire hoses located on main deck, bow and aft.

**Air conditioning, venting and extractor system**

- Veco air conditioning 192.000 b.t.u. – water recirculation
- - Salon: 2 x 17,000 BTU
- - Galley: 1 x 17,000 BTU
- - Master cabin: 2 x 13,000 BTU
- - Starboard guest cabin: 1 x 9,000 BTU
- - Port guest cabin: 1 x 9,000 BTU
- - Starboard VIP cabin: 1 x 13,000 BTU
- - Port VIP cabin: 1 x 13,000 BTU
- - Aft crew cabin: 1 x 4,500 BTU
- - Captain cabin: 1 x 4,500 BTU
- Engine room venting system through two electric fans (220V) and two electric
- Air extractor for the technical area on aft.
- Galley hood and galley extractor.

- Fire main pump, air conditioning cooling pump and watermaker are connected to the two sea water intakes for general utilities.
- Part of main engines cooling water is used to cool the gear box and the raisers for gas discharge.
- The fire pump is also used for chain washdown.
- CuNi 90/10 or Cunipress piping.

- Fancoils spread in all the following areas with separate control:
- - Dining area: 2 x 17,000 BTU
- - Wheelhouse: 1 x 24,000 BTU + 1 x 9,000 BTU
- - Master head: 1 x 9,000 BTU
- - Starboard guest head: duct from the cabin
- - Port guest head: duct from the cabin
- - Starboard VIP head: duct from the cabin
- - Port VIP head: duct from the cabin
- - Bow crew cabin: 1 x 3,000 BTU
- Centralized air extraction system for all the heads through two extractors.
- extractors (220 V) in order to guarantee good air circulation.
- Air extractor for the batteries area.

32 METRI

YEAR  
2022LENGTH  
32.00 m

VAT NOT PAID | WITHOUT OPTIONS

By request

**Main engines and generators exhaust system**

- Main engines exhaust ducts are made in AISI 316 for the wet part and AISI 304 for the dry part, and are insulated with proper composite material.
- Each diesel generator exhaust system will have a muffler and a gas/water separator.
- Raisers in AISI 316 for the engines exhaust cooling.
- Generators exhausts ducts in rubber.

**Electro-hydraulic system**

- One electro-hydraulic unit in the aft technical area for rudders, working at 24V and 220V.
- Two PTO mounted on gear boxes for the bow thruster pumps.
- One electro-hydraulic unit in the aft technical area for trim tabs, working at 24V.
- One electro-hydraulic unit in the aft technical area for gangway, garage door and launching/recovering system for tender, working at 24V and 220V.

**Insulation**

- Engine room bow bulkhead:
  - – Mapflex
  - – Bulkhead metal finishing inside the engine room
  - – Double layer of 130kg/m3 rock wool
  - – Isover ultimate MPA66
- Engine room ceiling (in way of deck penetrations):
  - – Mapflex
- Engine room aft bulkhead:
  - – Bulkhead metal finishing inside the engine room
  - – Double layer of 130kg/m3 rock wool
- – Double layer of 130kg/m3 rock wool
- – Isover ultimate MPA66
- Engine room ceiling:
  - – Mapflex
  - – Ceiling metal finishing inside the engine room
  - – Single layer of 130kg/m3 rock wool
  - – Ceiling metal finishing inside the engine room
  - – Double layer of 130kg/m3 rock wool
- Engine room hullsides:



**32 METRI**YEAR  
**2022**LENGTH  
**32.00 m**

VAT NOT PAID | WITHOUT OPTIONS

**By request**

- – Bulkhead metal finishing inside the engine room
- – Fonomap
- External area of the engine room air extractor ducts:
- Master head ceiling:
  - – Soundflex
  - – Isover ultimate MPA66
  - – Isover ultimate MPA66
- Master cabin hullsides:
- Guest cabins and heads hullsides:
- Guest cabins and heads ceilings:
  - – Soundflex
  - – Isover ultimate MPA66
- – Fonomap 213/1 003
- Galley bow bulkheads:
  - – Soundflex
  - – Soundflex
  - – Isover ultimate MPA66
  - – Isover ultimate MPA66
- Main deck sides:
- Wheelhouse ceiling:

- Bulkhead between engine room entrance and salon:
- – Bulkhead metal finishing inside the engine room entrance
- – Double layer of 130kg/m3 rock wool
- – Isover ultimate MPA66
- Master head hullsides:
- Master cabin ceiling:
  - – Soundflex
  - – Isover ultimate MPA66
  - – Isover ultimate MPA66
- – Isover ultimate MPA66
- VIP cabins hullsides:
- VIP cabins ceilings:
  - – Soundflex
  - – Isover ultimate MPA66
- Galley (fridge area):
- Galley hullside:
- Main deck ceilings:
  - – Soundflex
  - – Isover ultimate MPA66

32 METRI

YEAR  
2022LENGTH  
32.00 m

VAT NOT PAID | WITHOUT OPTIONS

By request

- – Isover ultimate MPA66

- Wheelhouse sides:

**Safety equipment**

- Two auto-inflatable life rafts for eight people on flybridge.
- Fourteen life jackets.

**Miscellaneous**

- Two mooring hooks.
- Two 2m (6'6") chains (diam.: 10mm).
- Eight F6 fenders with line (diam.: 14 mm.).
- Two 15m. (50') floating lines.
- Two buoys with 10m floating line.
- Owner's manual.

**DecorSalon and dining area**

- All furniture in light wood and mahogany wood.
- Decorative panels on the bow bulkhead in wallpaper and mahogany wood.
- Ceiling in sanded oak.
- Wooden flooring between salon and dining area and next to the cockpit door.
- Accessories in chrome finishing.
- Ottoman upholstered in fabrics with two trays in lacquered wood.

- – Soundflex

- – Isover ultimate MPA66

- Two life rings, with emergency light.
- Portable extinguishers.

- Two 27,5m (90'2") mooring lines (diam.: 30mm.).
- One 70m (229'8") towing line (diam.: 30mm.).
- One box of emergency rockets.
- Two stainless steel redance (diam.: 32mm.).
- English labeling in engine room and technical areas.

- Panels in leather or fabrics and mahogany wood.
- Sides in lacquered wood.
- Sliding doors to pantry and main deck foyer in mahogany wood.
- Carpet flooring in salon and dining area.
- Three sofas and two armchairs.

32 METRI

YEAR  
2022LENGTH  
32.00 m

VAT NOT PAID | WITHOUT OPTIONS

By request

- Coffee table in lacquered wood.
- Dining chairs in fabrics.
- Wooden venetian blinds at the windows, with electric mechanism.
- LED spotlights on ceiling.

**Raised pilot house**

- All furniture in sanded oak, leather, lacquered wood and stainless steel.
- Ceiling in light wood and leather.
- Dashboard in lacquered wood with surroundings in leather.
- Wheel in leather.
- Handrails and fiddles in chrome finishing.
- Wooden staircase steps to flybridge.
- Staircase steps to main deck foyer in backlit onyx.

**Main deck foyer**

- Bulkheads in light wood and mahogany.
- Furniture in light wood and mahogany.
- Doors in mahogany and light wood.
- wood, mahogany handrail, and floating steps in backlit onyx.
- Cabinet for air conditioning in light wood and mahogany.
- LED spotlights.

- Dining table with base in lacquered wood and top in sanded oak.
- Aft curtain in fabrics.
- Ceiling above dining area in lacquered wood with spotlights.

- Windows and windscreen frames in leather.
- L-shaped sofa in leather or fabrics.
- Dashboard panels in painted aluminum.
- Leaning bar in stainless steel with leather cushion.
- LED spotlights, LED navigation light and LED chart light.
- Carpet flooring.

- Window panels in lacquered wood.
- Ceiling in light wood and mahogany.
- Staircase to lower deck and raised pilothouse with balustrade in lacquered
- Additional handrail in stainless steel and leather upholstery for staircase to lower deck.
- Wooden venetian blind, manually operated.



32 METRI

YEAR  
2022LENGTH  
32.00 m

VAT NOT PAID | WITHOUT OPTIONS

By request

- Carpet flooring.

**Day head**

- Top in marble.
- Sink cabinet in mahogany with accessories in stainless steel.
- Accessories in chrome finishing.
- Wooden flooring.

**Master cabin and closet**

- Bulkheads in light wood and mahogany.
- Furniture in light wood, lacquered wood, and mahogany.
- Accessories in chrome finishing.
- Two club chairs in leather or fabrics.
- Ceiling in leather, fabrics and mahogany.
- Venetian blinds with electric mechanism in the cabin, venetian blind, manually operated, in front of the closet.
- LED spotlights on the ceiling
- LED courtesy lights on the staircase to the head.
- Staircase to the head in mahogany with antiskid finishing.

**Master head**

- Top in marble.

- Bulkheads in light wood and mahogany.
- Ceiling in lacquered wood.
- LED spotlights on the ceiling.

- Window panels in lacquered wood.
- Panels above headboard in wall-fabrics.
- TV furniture in mahogany.
- Headboard and bedrim in leather with perimeter in mahogany.
- Doors in mahogany or sanded oak.
- Separate blackout curtains, manually operated.
- Two lamps above the nightstands.
- Hanging bars with light in the closet.
- Floor in carpet and mahogany.

32 METRI

YEAR  
2022LENGTH  
32.00 m

VAT NOT PAID | WITHOUT OPTIONS

By request

- Sink cabinet in mahogany with integrated towel bar in stainless steel.
- Bulkheads in light wood and mahogany.
- Shower box in glass with stainless steel frame.
- Shower bench in teak.
- Venetian blinds, manually operated.
- Marble flooring.

**Lower deck lobby and staircase**

- Bulkheads in light wood, mahogany and leather.
- Storage cabinet doors in mahogany.
- Handrail in stainless steel.
- Carpet flooring.

- Accessories in chrome finishing.
- Storage cabinets with shelves in lacquered wood.
- Shower bulkheads in teak, laminated material and marble.
- Ceiling in lacquered wood.
- LED spotlights
- Shower grating in teak.
- Staircase to lower deck and raised pilothouse with balustrade in lacquered wood, mahogany handrail, and floating steps in backlit onyx.
- Ceiling in leather and lacquered wood.
- Doors in light wood and mahogany.