



YACHTS FOR SALE

**27 METRI**

YEAR  
**2022**

LENGTH  
**26.78 m**

  
**AZIMUT**  
YACHTS  
MONTENEGRO

27 METRI

YEAR  
2022

LENGTH  
26.78 m

VAT NOT PAID | WITHOUT OPTIONS

By request

Length overall	26.78 m
Beam overall	7.00 m
Draft	1.93 m
Material	Carbon Fiber   GRP
Cabines	4 / 5 + 2 crew
Head compartments	4 + 2 crew
Engine	2 x MAN R V12 - 1900 hp
Fuel capacity	9500 l
Water capacity	2000 l
Max speed	28.00 knots
Cruising speed	24.00 knots
Range	360 nm
Location	Italy

The company is not liable for validity of the information provided by the yacht-owner (images, specification of the yacht, list of equipment installed, its operability, engine hours, legal aspects). Actual engine hours are indicated at the moment of initial information placement and gets further periodically updated. Detailed information and characteristics will be provided on buyer's request and indicated in the contract.





Exterior Azimut Grande 27METRI

Exterior Azimut Grande 27METRI







Exterior Azimut Grande 27METRI

Exterior Azimut Grande 27METRI







Exterior Azimut Grande 27METRI



Exterior Azimut Grande 27METRI





Aft beach club

Sunbathing area on aft fly







Dining area on the flybridge

Bar on flybridge







Dining area in cockpit

Cockpit







Dining area in cockpit

Cockpit







Salon

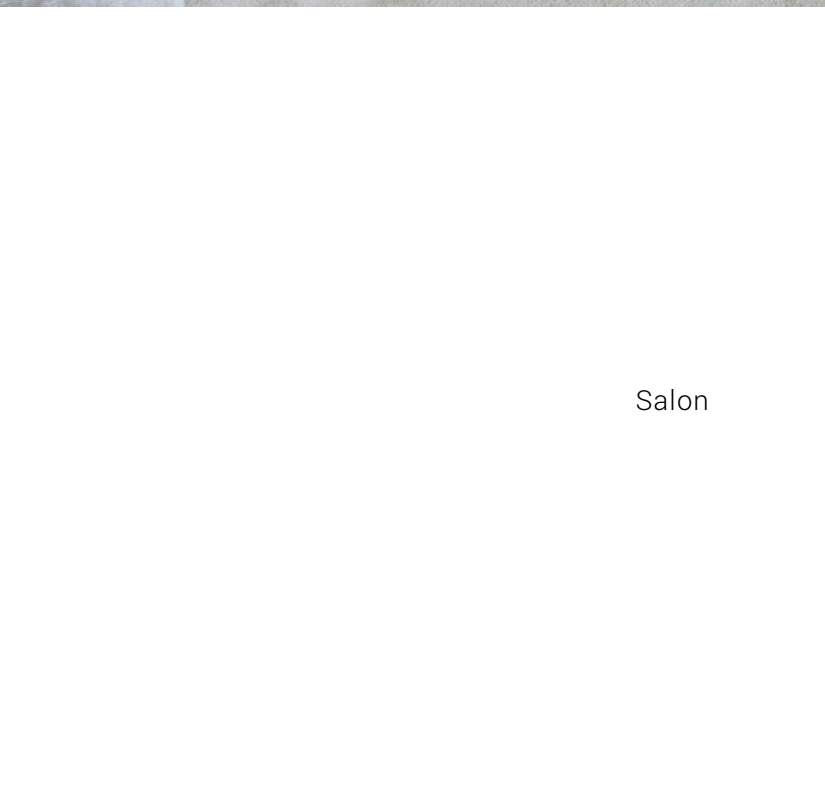
Salon







Salon



Salon







Salon

Salon







Dinette in salon

Galley







Owner's cabin on the main deck

Owner's cabin on the main deck







Dressing table in owner's cabin

Owner's cabin on the main deck







Owner's cabin on the main deck

Owner's cabin / Owner's head







Owner's head

Owner's head







Stairs to lower deck

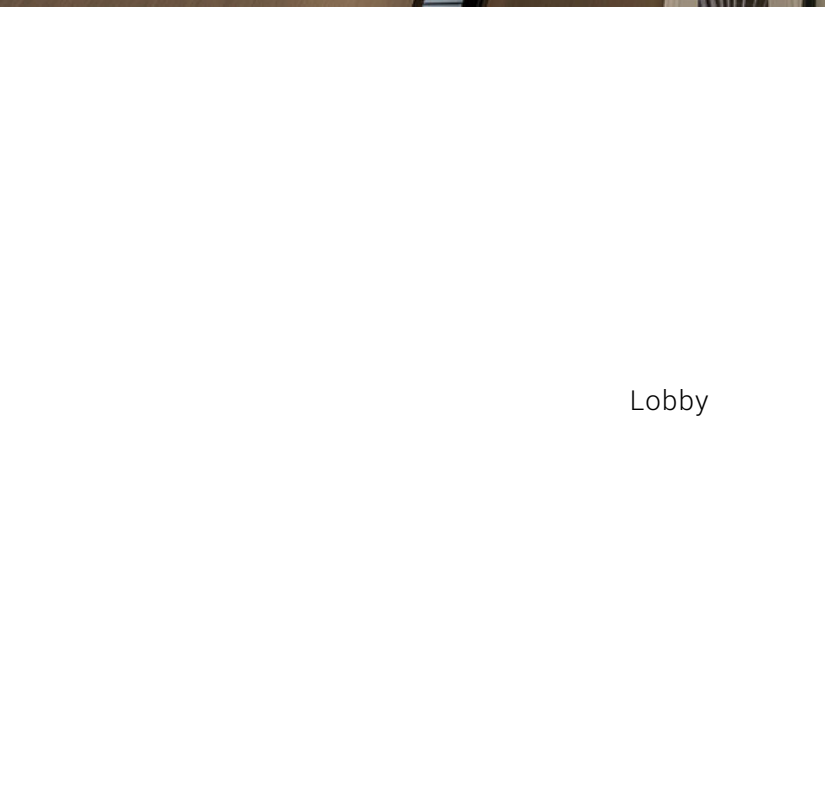
Stairs to lower deck







Lobby



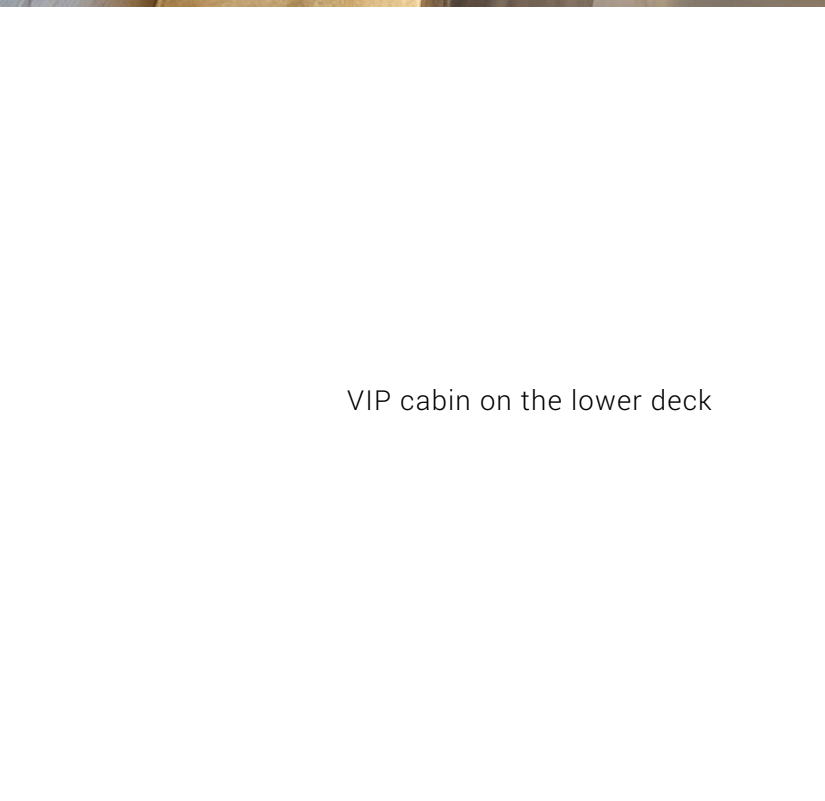
Lobby







VIP cabin on the lower deck



VIP cabin on the lower deck







VIP cabin on the lower deck

VIP head







VIP head

Guest cabin







Guest cabin

NAVIOP Advanced Monitoring System





# CARBON FIBER. THINK BIG

## CARBON TECH

Carbon Tech Generation

Carbon Tech Generation

## Grande 27METRI

CARBON TECH

Grande  
COLLECTION

Carbon fiber is the design choice to provide increased volumes and extended surfaces within same weight ranges, granting excellent levels of static and dynamic stability.

Carbon Fiber Hybrid Carbon Glass

Deckhouse	Carbon Fiber
Deck	Hybrid Carbon Glass
Flydeck	Carbon Fiber
Upper FDW Part Flydeck	Carbon Fiber
Radar Arch	Carbon Fiber
Hard Top (opt)	Carbon Fiber
Platform	Carbon Fiber





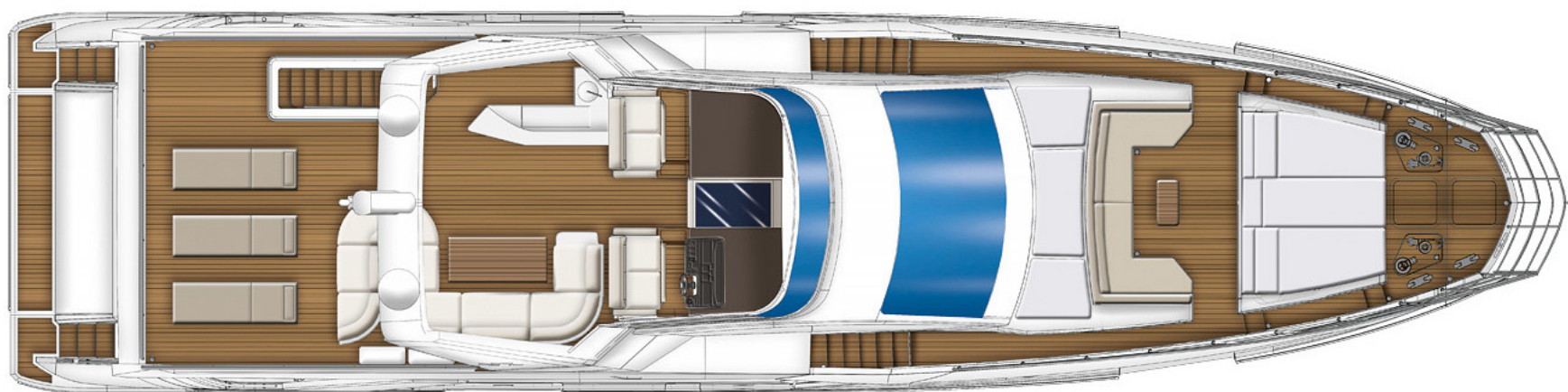


Humphree Automatic Trim System

EPS on main helm

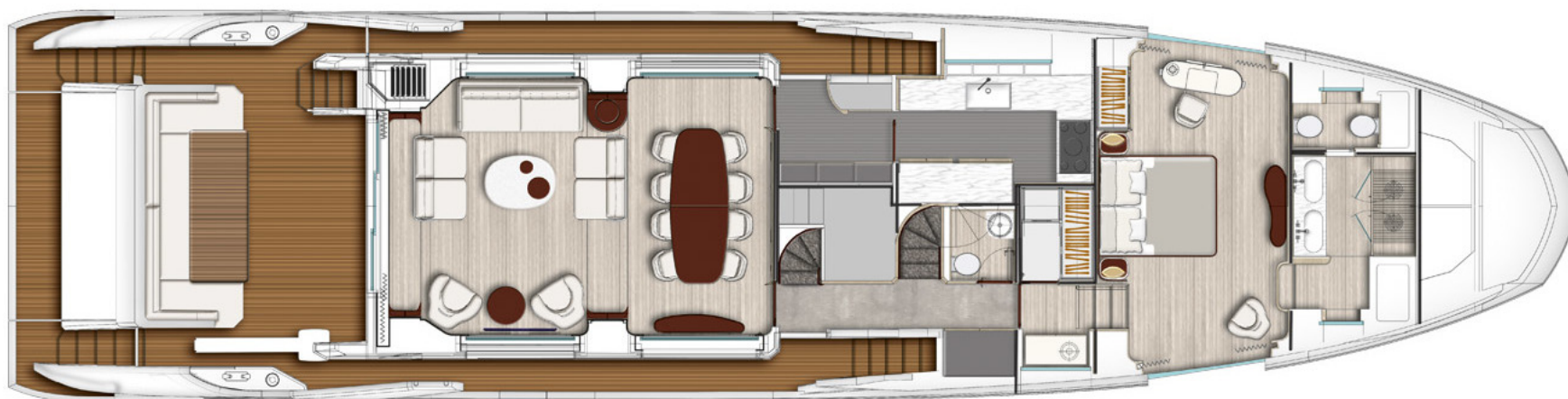






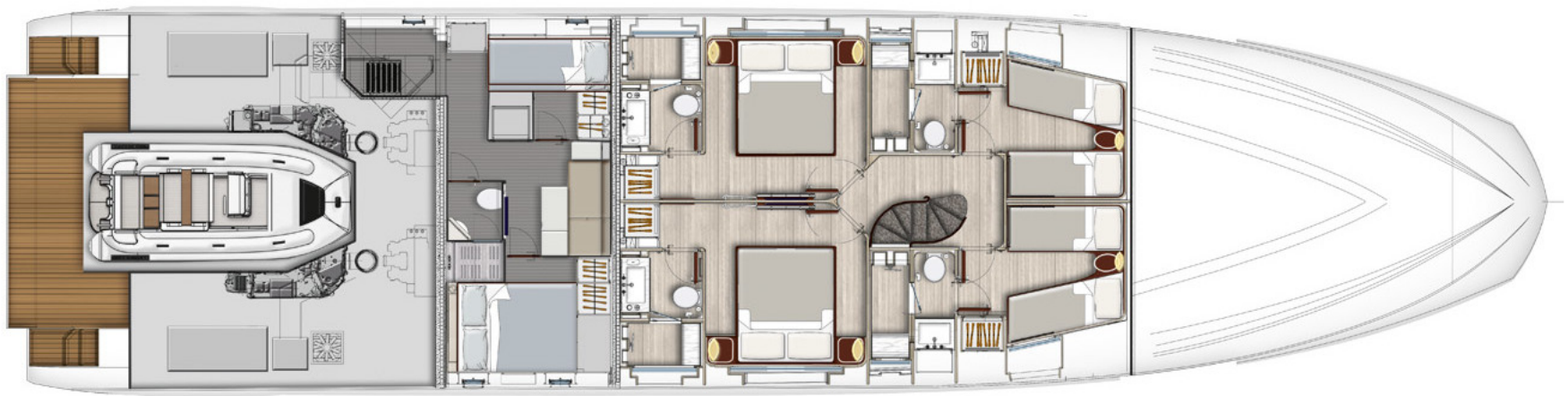
Flybridge



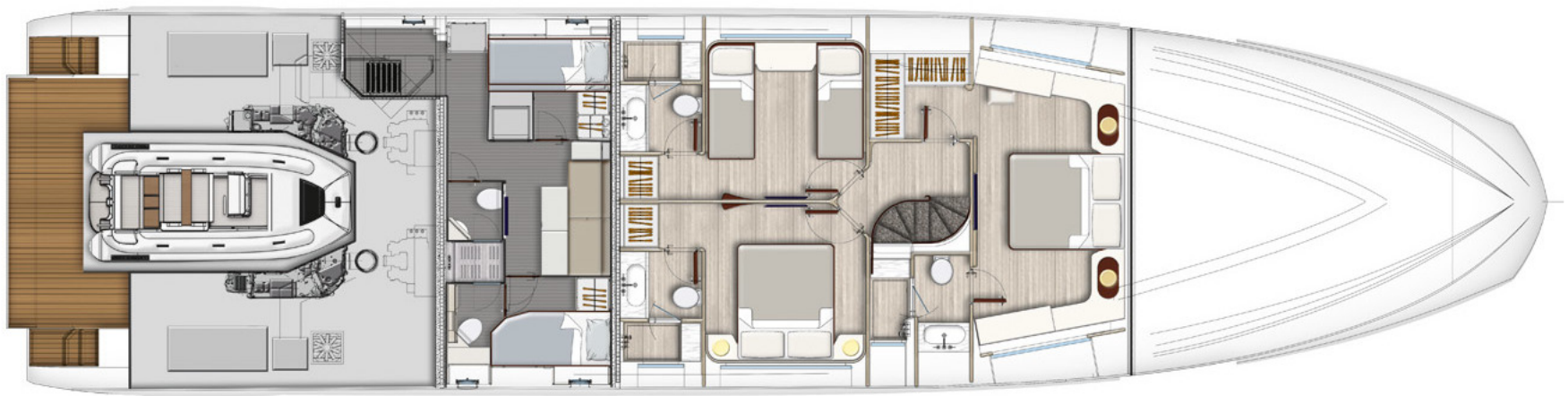


Main deck





Lower deck (5 cabins = 4 on the lower deck + master on main)



Lower deck (4 cabins = 3 on the lower deck + master on main)



27 METRI

YEAR  
2022

LENGTH  
26.78 m

VAT NOT PAID | WITHOUT OPTIONS

By request

SPECIFICATIONS

Gross tonnage	145 t	Length overall	26.78 m
Beam overall	7.00 m	Draft	1.93 m
Material	Carbon Fiber   GRP	Passenger capacity	16
Berths	8 / 10 + 3 crew	Cabines	4 / 5 + 2 crew
Head compartments	4 + 2 crew	Engine	2 x MAN R V12 - 1900 hp
Fuel capacity	9500 l	Water capacity	2000 l
Holding tank capacity	850 l	Grey water capacity	850 l
Max speed	28.00 knots	Cruising speed	24.00 knots
Range	360 nm	Displacement	92.96 t
Dry displacement	75.90 t	Interior designer	Achille Salvagni
Exterior styling & concept	Stephano Righini		

The company is not liable for validity of the information provided by the yacht-owner (images, specification of the yacht, list of equipment installed, its operability, engine hours, legal aspects). Actual engine hours are indicated at the moment of initial information placement and gets further periodically updated. Detailed information and characteristics will be provided on buyer's request and indicated in the contract.

27 METRI

YEAR  
2022LENGTH  
26.78 m

VAT NOT PAID | WITHOUT OPTIONS

By request

## STANDART SPECIFICATION

## Flybridge

- Access to flybridge via external stairway, located on port side
- Teak-covered steps leading to flybridge, with one handrail
- Plexiglas flybridge screen with stainless steel frame
- Dining area: one C-shaped sofa with backrest and removable cushions for outdoors
- Flybridge bar cabinet, with:
  - - Fridge
  - - Waste bin
- Control station: starboard seat, with two-seater bench
- Flybridge dashboard consisting of:
  - - Simrad display for:
    - >> monitoring
  - - Steering wheel
  - - Bow thruster controls
  - - Trim tab controls (intruder)
- Scuppers
- Navigation lights
- Anti-slip floor
- External GRP structural stairway
- Flybridge GRP flooring with anti-slip
- Radar arch in composite material with window inserts on external sides
- Fix table (dining area), with fix bases
  - - Sink built into cabinet with retractable water tap
  - - Barbecue with stainless steel protective cover for cabinet door and safety off switch
  - - Top for covering housing appliances, when not used
- Seating area on port side for two people
  - - MAN 7" display for engines
  - >> electronic navigation instruments, BRONZE version
  - - Engine throttles
  - - Communication systems (VHF)
  - - audible alarm controls
  - - 12 V socket
- Light mast
- Manual searchlight

## Bow and side walk aroundsBow



## 27 METRI

YEAR  
2022LENGTH  
26.78 m

VAT NOT PAID | WITHOUT OPTIONS

By request

- Chain locker accessible through hatch, with internal lighting and drainage
- Chain washing system
- Fore hatch (escape route from owner's head)
- Stainless steel handrails and Plexiglas bottle rack built into fore sunbed area
- Protective cover for external cushions
- Teak floor
- Speakers

**Walk arounds**

- Two side lockers (one on each side) in deckhouse bow area
- - port side: pantry / galley
- Refueling plugs on both walk arounds
- Gray water discharge on starboard walk around
- Rubber rub-rail with knurled stainless steel section
- Teak floor
- Shades for side glass panel

**Cockpit and platform/garageCockpit**

- Two accesses (one per side)

- Fender compartment built in the fore peak
- Stainless steel anchor line anti-rubbing protection
- Fore sunbed area with removable cushions in fabric for outdoors
- Sofa built in the GRP structure, with backrest, equipped with lockers and removable cushions
- Four electric windscreen wipers
- Scuppers

- Two manual side sliding doors giving access to:
- starboard side: foyer
- Fresh water filling plug on each walk around
- Black water outlet on port walk around
- GRP side boarding gates
- Pulpit with handrail Ø 40 mm (1.57 in), thickness 3 mm (0.12 in) and stanchions Ø30mm(1.2in)

27 METRI

YEAR  
2022LENGTH  
26.78 m

VAT NOT PAID | WITHOUT OPTIONS

By request

- One C-shaped sofa (in dining area) with backrest, in central position, built in the deck, equipped with lockers and removable cushions
- Protective cover for external cushions
- Cockpit's bar cabinet, positioned towards the starboard side, composed of:
  - - Icemaker
  - - Cover top
  - Teak floor
- Gangway extensible system, three positions, maximum capacity 150 kg (330.7 lb) operated through 24 V DC electro- hydraulic control unit

**Platform/garage**

- Garage access pivoting hatch, in GRP with teak finish, having the following dimensions:
  - open: 3811 x 2555 mm (12' 6" x 8' 4.6")
- Cockpit external access steps in GRP with steps covered in teak
- External shower head, on starboard side
- Teak floor
- Foldable manual swimming ladder, on port side inside the garage
- INSTALLABLE TENDER (OPT):
  - - MAXIMUM DIMENSIONS OF TENDER - FLYBRIDGE: 3.30 x 1.70 m (10' 10" x 5' 7") - LIFT PAYLOAD EXCLUDING GRP, TEAK AND LADDER: 1000 kg (2204.6 lb) OPEN - DAVIT PAYLOAD: 500 kg (1102.3 lb)

- Fix teak table (in dining area) with fixed bases
- Saloon access door made in steel with tempered glass. This is composed of three foldaway sliding flat panels, which open towards the starboard side.
- Scuppers
  - - Sink built into cabinet with retractable water tap
  - - Waste bin
- Engine room access, through watertight hatch and teak finish
- Two stainless steel flybridge support poles, Ø 90 mm (3.54")
- closed: 3811 x 760 mm (12' 6" x 2' 6")
- Platform hatch, rated capacity 1000 kg (2204.6 lb), supplied at 230 V AC.
- Two stainless steel boarding gates
- Two stainless steel handrails
- Extractable emergency manual swimming ladder, on starboard side
- Starboard side locker with hatch
  - - MAXIMUM DIMENSIONS OF TENDER - GARAGE: 4.50 x 2.00 m (14' 9" x 6' 6.7")



27 METRI

YEAR  
2022LENGTH  
26.78 m

VAT NOT PAID | WITHOUT OPTIONS

By request

- - RECOMMENDED TENDER - GARAGE: WILLIAMS DJ445
- - NOTES: with the following features: collapsible windscreen, removable steering wheel, deflatable bow (the mini-compressor must be purchased with the dinghy)

- - RECOMMENDED TENDER, FLYBRIDGE: Pirelli J33

#### Wheelhouse

- Located on the half deck raised from the main deck.
- - internal ladder located in the foyer (starboard side)
- The wheelhouse includes:
  - - storage cabinet, aft, starboard side
  - - Carpeted floor
  - - LED technology lighting
  - - MAN 7" display for engines
  - >> electronic navigation instruments, BRONZE version
  - - Engine throttles
  - - magnetic compass
  - - audible alarm controls
  - 12 V socket
  - 24 V / 230 V electric panel, located aft, port side
  - Two-seater sofa, placed longitudinally, on port side of the wheelhouse

- The wheelhouse is accessible through:
  - - sliding companion on the flybridge (direct connection between internal wheelhouse and flybridge external wheelhouse)
  - - adjustable squab with stainless steel structure and padded cushion
  - - Leather-covered steering wheel
  - - lacquered ceilings, mullions, and window carters
- Internal dashboard consisting of:
  - - Simrad display for:
    - >> monitoring
  - - Communication systems (VHF)
  - - Bow thruster controls
  - - Trim tab controls (intruder)
  - Adjustable air conditioning outlet
  - Emergency panel
  - Flybridge access ladder, placed at the center of the yacht

#### Pantry

The company is not liable for validity of the information provided by the yacht-owner (images, specification of the yacht, list of equipment installed, its operability, engine hours, legal aspects). Actual engine hours are indicated at the moment of initial information placement and gets further periodically updated. Detailed information and characteristics will be provided on buyer's request and indicated in the contract.

27 METRI

YEAR  
2022LENGTH  
26.78 m

VAT NOT PAID | WITHOUT OPTIONS

By request

- Located on port side of the main deck, this area is accessible through:
- - side service sliding door connecting to external port walk around
- - Low storage cabinets located on yacht center side, for storage (see general plans)
- - Top above the storage cabinets, to be used as a resting or work surface
- - LED technology lighting

**Galley**

- Located on port side, the access is through concealed sliding door located forward of the pantry. This layout allows full isolation of this area from the saloon and dining area reserved for the owner and his guests.
- Stainless steel sink with faucets
- 76 l (2.68 cu.ft) oven
- Flooring in vinyl
- Storage wall units on port bulwark
- Sockets

**Day toilet**

- Located in the foyer (starboard side of the main deck), just forward of the stairs leading to the cabins.
- Mixer tap
- Mirror

- - sliding door for direct access to saloon and dining area
- The pantry includes:
- - Storage cabinet for crockery located at the bulwark
- - Wooden flooring
- - Air conditioning outlet grating

- The galley is composed of:
- 419 l (14.8 cu.ft) refrigerator + 247 l (8.7 cu.ft) freezer
- Extractor hood
- Four-burner induction range
- Composite material worktop
- LED technology spotlights
- Air conditioning outlet grating

- It is composed of:
- Washbasin
- Toilet



# 27 METRI

YEAR  
**2022**

LENGTH  
**26.78 m**

VAT NOT PAID | WITHOUT OPTIONS

**By request**

- Synthetic teak floor
- Air intake fan
- Head accessories

- LED technology lighting
- Socket

## Saloon / Dining room

- It is composed of:
- Two opposed two-seater sofas, on port side
- Two armchairs on starboard side
- Carpet floor in the dining area
- Ceiling lamp in the dining area
- Air conditioning control panel
- Saloon area with full-height panoramic window on starboard side
- Eight chairs
- Side venetian blinds
- One low storage cabinet located on port side near the central door
- Lacquered ceiling
- - pantry / galley (port side)

- One three-seater sofa, placed longitudinally on port side
- Table
- Carpet floor in the saloon area
- Ceiling-mounted recessed spotlights with dimmer and LED technology
- Sockets
- Dining area with full-height panoramic window on port side
- Dining table
- Air conditioning outlet grid built in the internal furnishing
- Saloon door curtain in fabric
- One storage cabinet located on starboard side of the dining area
- Two sliding doors located forward, for access to:
- - foyer/ owner's area / guests' area / wheelhouse (starboard side)

## Owner's cabin

- The full-beam owner's cabin is composed of:

The company is not liable for validity of the information provided by the yacht-owner (images, specification of the yacht, list of equipment installed, its operability, engine hours, legal aspects). Actual engine hours are indicated at the moment of initial information placement and gets further periodically updated. Detailed information and characteristics will be provided on buyer's request and indicated in the contract.

27 METRI

YEAR  
2022LENGTH  
26.78 m

VAT NOT PAID | WITHOUT OPTIONS

By request

- Side entry to cabin via small corridor
- Portlight in entrance compartment
- Headboard
- Two reading lights
- Fix side windows on each side of the cabin, full height
- Main lighting with dimmer, LED technology
- Direct access to head, through passage on starboard side
- Venetian blinds
- Lacquered and wood ceiling
- Sockets
- Wardrobe on port side

- Walk-in wardrobe with wardrobes equipped with hanger bar, internal lighting, chest of drawers, full-height mirror with concealed sliding door
- Double bed at the center of the yacht, with foldaway bed base and locker Access to service compartment under the bed
- Mattress, pillows and bedspread
- Two bedside tables with drawer
- Chest of drawers, forward of the owner's bed
- LED technology courtesy lighting
- Full length mirror
- Wood-upholstered bulwarks
- Carpeted floor
- Air conditioning system control panel

**Owner's head**

- Full-beam, located forward of the owner's cabin. It is composed of:
- Central shower enclosure with:
  - - shower walls covered in marble and synthetic teak
  - - thermostatic mixer
  - - soap holders
  - - suction grating
- independent access from owner's cabin
- - glass access door
- - removable grating
- - hand-held and ceiling-mounted shower head
- - watertight spotlights



27 METRI

YEAR  
2022LENGTH  
26.78 m

VAT NOT PAID | WITHOUT OPTIONS

By request

- Double washbasin with quartzite top
- Storage drawer under the washbasin
- Compartment separated by a sliding door on port side, for toilet
- Direct lighting with cockpit ceiling-mounted recessed spotlights with LED technology
- Venetian blinds
- Sockets
- Emergency escape hatch in fore sunbed area

- Mirrors
- Side cupboard with storage space
- Lighting with LED ceiling light above washbasins
- Four openable portlights
- Synthetic teak floor
- Head accessories

**Lobby**

- The below deck corridor is composed of:
- Wooden steps
- Upholstery on bulwark in wood essence
- LED technology lighting
- Storage compartment under the ladder

- Ladder leading to the main deck
- Lacquered ceiling
- Carpeted floor
- Ladder steps lighting

**Starboard side guest cabin**

- It is composed of:
- Mattress, pillows and bedspread
- Two bedside tables with drawer
- Lacquered ceiling

- Double bed placed transversally on bulwark, with foldaway bed plane and locker below, headboard
- Two reading lights
- One wardrobe with hanger bar and shelves

27 METRI

YEAR  
2022LENGTH  
26.78 m

VAT NOT PAID | WITHOUT OPTIONS

By request

- Upholstery on bulwark in wood essence
- Panoramic fixed window with built-in portlight
- Carpeted floor
- Headboard light
- Sockets

- Full length mirror
- Venetian blind
- LED technology lighting
- Direct access to head
- Air conditioning system control panel

**Starboard guest head**

- It is composed of:
- Faucets
- Shower enclosure with:
  - - thermostatic mixer
  - - synthetic teak grating
- LED lighting
- Venetian blind
- Head air extraction system
- Openable round portlight
- Washbasin with quartzite top
- WC
  - - glass door
  - - recessed ceiling-mounted shower head - hand-held shower head
  - - soap holders
- Cupboard above washbasin with mirror doors
- Synthetic teak floor
- Head accessories
- Socket

**Port side guest cabin**

- It is composed of:
- Mattresses, pillows, bedspreads
- Two fixed single beds



27 METRI

YEAR  
2022LENGTH  
26.78 m

VAT NOT PAID | WITHOUT OPTIONS

By request

- Two reading lights
- One wardrobe with hanger bar and shelves
- Lacquered ceilings
- Full length mirror
- Venetian blind
- LED technology lighting
- Direct access to head
- Air conditioning system control panel

**Port guest head**

- It is composed of:
- Faucets
- Shower enclosure with:
- - thermostatic mixer
- - synthetic teak grating
- LED lighting
- Venetian blind
- Head air extraction system
- Openable round portlight

- One bedside table with drawer
- Wall units on the bulwark
- Upholstery on bulwark in wood essence
- Panoramic fixed window with built-in portlight
- Carpeted floor
- Headboard light
- Sockets

- Washbasin with quartzite top
- WC
- - glass door
- - recessed ceiling-mounted shower head - hand-held shower head
- - soap holders
- Cupboard above washbasin with mirror doors
- Synthetic teak floor
- Head accessories
- Socket

**VIP cabin**

The company is not liable for validity of the information provided by the yacht-owner (images, specification of the yacht, list of equipment installed, its operability, engine hours, legal aspects). Actual engine hours are indicated at the moment of initial information placement and gets further periodically updated. Detailed information and characteristics will be provided on buyer's request and indicated in the contract.

27 METRI

YEAR  
2022LENGTH  
26.78 m

VAT NOT PAID | WITHOUT OPTIONS

By request

- Located at the fore end of the lower deck, accessible through a small corridor, located on port side of the lobby's fore zone.

- Mattress, pillows and bedspread
- Two bedside tables with drawer
- Chest of drawers
- Lighting with recessed LED spotlights
- Two fixed panoramic windows
- Two wooden Venetian blinds
- Lacquered and wood ceiling
- Lacquered/fabric-upholstered headlining
- LED courtesy lights
- Sockets

**VIP head**

- It is composed of:
- Faucets
- Shower enclosure with:
  - - thermostatic mixer
  - - removable grating

- It is composed of:
- Double bed at the center of the yacht, with foldaway bed plane and locker below, headboard
- Two reading lights
- Wardrobe on port side with hanger bar and internal lighting
- Two wall units with storage above side panoramic windows
- Two LED wall lights on headboard
- Two openable round portlights built-in the panoramic windows
- Direct access to head
- Wooden/fabric upholstered bulwarks
- Carpeted floor
- Air conditioning system control panel

- Washbasin with quartzite top and riser
- WC
  - - glass door
  - - built-in ceiling-mounted shower head - hand-held shower head



27 METRI

YEAR  
2022LENGTH  
26.78 m

VAT NOT PAID | WITHOUT OPTIONS

By request

- - soap holders
- LED lighting
- Openable round portlight
- Synthetic teak floor
- Head accessories

- - and watertight spotlight
- Cupboards above washbasin with mirror doors
- Venetian blind
- Head air extraction system
- Socket

**Crew roomCrew area**

- The crew area is accessible through a side door located on port side walk around. Through this access it is also possible to reach the engine room It is composed of:

- shared dinette. Both cabins have:
- Wardrobe
- Air conditioning system control panel
- LED lighting
- The area shared by the two cabins includes:
- Drawer-type fridge
- Storage compartment

- commander's cabin on starboard side, with single bed
- crew cabin, port side, with two bunk beds
- Carpeted floor
- Chest of drawers
- Socket
- Mattress, pillows and bedspread
- Dinette
- Washer-dryer

**Crew head**

- The crew area is provided with double head with shared shower.
- Each head is composed of:

- The commander can access the head directly from his cabin, while the crew can access the head through the door located in the shared area.

27 METRI

YEAR  
2022LENGTH  
26.78 m

VAT NOT PAID | WITHOUT OPTIONS

By request

- Toilet
- One washbasin
- Head accessories
- LED lighting
  - - grating
  - - LED lighting

- Wall unit with mirror
- One faucet
- Socket
- Shared shower with:
  - - shower head with flexible pipe
  - - access from the two adjacent heads, through two independent doors

**Electric systemMain characteristics**

- Shore-powered power supply
- AC electric panel: Installed on fore bulkhead of the engine room
- Emergency control panel: Installed in the wheelhouse
- Onboard voltages:
  - - 24 V DC from battery set
- DC electric panel: Installed on fore bulkhead of the engine room
- Auxiliary electric panel: Installed in the wheelhouse
- Battery cut-out/emergency/fire extinguishing system control panel: located in the cockpit
  - - 230V - 50 Hz AC
  - - 12 V DC from battery set and AC/DC voltage reducer

**Galvanic current insulation**

- Zinc anodes

**Generator**

- Two single phase generators - 28 kW/230 V AC-50 Hz for EU system
- Remote start up
- Soundproofing box



27 METRI

YEAR  
2022LENGTH  
26.78 m

VAT NOT PAID | WITHOUT OPTIONS

By request

**Shore power sockets**

- EU two 3P 63 A sockets connected to two isolation transformers, 15 kW each

- The AC power sources terminate on the main electric panel in the engine room, provided with a voltmeter and ammeter for the 230 V power supply. The AC power sources are protected by suitably sized fuses, and introduced into the network by means of remote control switches.

**Batteries**

- Services: twelve 95 Ah - 12 V DC batteries
- Generator: two 95 Ah - 12 V DC batteries
- Engine start-up battery charger: one Master volt 30 Ah - 24 V

- Engines: six 95 Ah -12 V DC batteries
- Service battery charger / service backup: two Master volt 80 Ah - 24 V
- Genset start up battery charger: one Master volt 10 Ah - 12 V

**Lights and sockets**

- 230 V AC sockets for main utility power supply, EU type
- Internal lighting: 24 V LED-type, with dimmer

- USB sockets
- External lighting: 24 V LED-type (no dimmer)

**Electronic navigation instrumentsBRONZE version**

- Hull transducer
- Wheelhouse
- - one SIMRAD VHF RS90
- Flybridge
- - one SIMRAD VHF RS90

- - one SIMRAD through transducer DST800
- - three SIMRAD NSS-16 Evo 2 multifunction displays
- - one SIMRAD GOFREE WIFI wireless module
- - two SIMRAD NSS-16 Evo 2 multifunction displays

# 27 METRI

YEAR  
**2022**

LENGTH  
**26.78 m**

VAT NOT PAID | WITHOUT OPTIONS

**By request**

- - one SIMRAD IS40 automatic pilot
- Radar arch antennas:
- For a detailed list of alternative/additional equipment available, please refer to the Optionals price list

- - one SIMRAD OP10 automatic pilot key- board
- one SIMRAD BROADBAND 4G 36 Nm radar aerial

## **Bilge system**

- The system is divided into two lines, with the following characteristics:
    - - two in the engine room (fore and aft)
    - - one (central) forward of the gray / black water tank
  - Each electric pump can be controlled either manually or automatically.
    - two in engine room
    - two at the bow
  - The secondary bilge system is connected in parallel to the fire extinguishing and chain washing system, therefore in case of engine room pump fault, it is possible to operate special three-way valves and use the fore (chain wash) pump(s).
  - The bilge system is also equipped with an emergency bilge system for the engine room, through bypass on the engine seawater intake: this system allows sucking the water from the engine room using the cooling pump of the main engines.
- Main bilge system composed of six automatic and independent pumps located in each watertight compartment:
    - - two (one on each side) next to the diesel tank
    - - one (central) in the fore service compartment (below owner's tray) and controlled through microswitches
  - Secondary or auxiliary bilge system, composed of six suction points located as follows:
    - two on fuel tank side (one on each side)
  - Each suction point is connected through flexible piping to a manual valve and a main manifold located in the engine room, from where it is possible to select one or more selector switches for emptying the relevant bilge.
  - A second electric pump (connected in parallel to the electric bilge pump) operating as a backup
  - can be connected through three-way valves in case of main pump fault.

## **Fire extinguishing system**



27 METRI

YEAR  
2022LENGTH  
26.78 m

VAT NOT PAID | WITHOUT OPTIONS

By request

- System manual activation control in the cockpit
- One 106-liter (3.74 cu.ft) gas extinguisher in the engine room with nozzles located above the engines
- The system operates as follows:
  - it is possible to use either the chain washing pump located at the bow or the auxiliary bilge pump located in the engine room (one as a replacement for the other in case of fault) as salt water hose supply pump.

**Fuel system**

- Two structural GRP diesel tanks, 4750 l (1254 US.liq.gal.) each, located centrally and longitudinally forward of the engine room bulkhead, total 9500 l (2508 US.liq.gal.)
- Two local electronic fuel level indicators (one on each tank)
- Two MAN diesel filters for engines
- Four tank breathers on bulwarks
- Remote generator diesel shut-off via 12 V solenoid valve
- Possibility of leveling diesel from one tank to the other, using an automatic pump

**Fresh water system**

- 2000 l (528 US.liq.gal.) structural GRP tank under fore tray
- Water pressure pump unit located under the cabin access corridor's floor, with double power supply (230 V AC - 50/60 Hz and 24 V DC) with electronic control and expansion tank
- Level sensor with electronic gage in wheelhouse

- System indicators/reset on internal and flybridge dashboards and also in the crew room
- Two hoses located in the compartment under the cockpit's ladder and in the chain locker at the bow
- Closing the valves on fuel delivery lines to engines and generators

- Four electronic fuel level sensors (two on each tank) monitored by means of indication on internal wheelhouse and flybridge
- Two engine double RACOR settling filters
- Two filters for generator set
- Remote engine diesel shut-off via 24 V solenoid valve
- Two refueling plugs located on walk arounds (one plug on each side)
- Possibility of refueling both tanks from a single refueling plug, by means of a system of manual valves located in the crew room

- Two water filling plugs located on the fore part of walk arounds (one plug on each side)
- Two water heaters, 80 l (21.12 US.liq.gal.) each, in the fore service compartment
- Fresh water toilet flushing

27 METRI

YEAR  
2022LENGTH  
26.78 m

VAT NOT PAID | WITHOUT OPTIONS

By request

- System that can be isolated by ACORN manifolds
- The system can be supplied through the onboard water pressure pump or from shore (OPT) Utilities supply: hot/cold water is distributed through a network supplied by the water pressure group. The hot water (heated by the water heater) is kept circulating in the system through a special dedicated pump.

**Black water system**

- Structural GRP tank, 850 l (224.5 US.liq.gal.) located at the center of the yacht forward of the diesel tank
- 50 l/min (13.2 US.liq.gal./min) macerator pump
- Tank collection of all toilet discharges
- Two anti-odor filters

**Gray water system**

- Structural GRP tank, 850 l (224.5 US.liq.gal.) located at the center of the yacht forward of the diesel tank
- Four gray water collection trays for automatic transfer from utilities to main tank
- Suction point on starboard walk around for emptying the tank from shore

**Seawater system**

- Engine cooling system: includes one sea- water intake for each engine with filter and 4" ball valve for cooling the following equipment:

- Provision for desalination system
- All utilities are supplied with hot and cold water, except for the engine room.

- Level sensor with gage in wheelhouse
- Tank emptying through electric pump manually controlled from the internal wheelhouse
- Suction point on port walk around for emptying the tank from shore
- TECMA toilet
- Two tank breathers on bulwarks

- Level sensor with automatic/manual pump control and alarm in the wheelhouse
- One 50 l/min (13.2 US.liq.gal./min) macerator pump
- Two tank breathers on bulwarks

27 METRI

YEAR  
2022LENGTH  
26.78 m

VAT NOT PAID | WITHOUT OPTIONS

By request

- Engines
- Thru-hull fitting
- Generator cooling system: includes one seawater intake for generator with filter and 1 1/2" ball valve

**Ventilation/extraction**

- Forced head ventilation: with 24 V DC extractors
- - two fans for forced air intake through air ducts located on deckhouse side (inner side of walk arounds) and provided with water separator.

**Other systems**

- Intruder system composed of:
  - - two servo units
  - - two control panels (one on each wheelhouse
  - - two rudder tillers with casings
  - - two electro-hydraulic control units
- Aft pivoting hatch, 230 V AC, maximum capacity 1000 Kg (2204.6 lb)

**Air conditioning system**

- Marine gears
- Raiser
- Air conditioning cooling system: one 1 1/2" seawater intake with filter and ball valve
- Chain washing pump / firefighting system / secondary bilge: two seawater intakes with filter and 1 1/2" valve for supplying chain washing pump located at the bow and secondary bilge pump located in the engine room.

- Engine room:
  - - four extractors located abaft the engine room, with extraction duct that conveys the air outside through an opening on hull bulwark.

- - two intruders, 1100 mm (43.3 in)
- - one electronic control unit
- Steering system composed of:
  - - two hydraulic cylinders
- Gangway system: extendible, 3 positions, maximum capacity 150 Kg (330.7 lb), operated through 24 V DC electro- hydraulic control unit.



## 27 METRI

YEAR  
2022LENGTH  
26.78 m

VAT NOT PAID | WITHOUT OPTIONS

By request

- Air conditioning type: The system is of the thermally-treated water circulation type, with fancoils located in various rooms

- Distribution:

- - Owner's cabin: two fancoils AP8 (12.500 BTU)
- Galley: one fancoil AP8 (12.500 BTU)
- Saloon: two fancoils AP8 (12.500 BTU) - VIP cabin: two fancoils AP5 (9.200 BTU)
- - Starboard guest cabin: one fancoil AP5 (9.200 BTU)
- - Crew cabin and crew dinette: one fan- coil AP3 (6.200 BTU)

- Compressor unit in engine room, total 180,000 BTU with inverter technology
- One seawater pump
- - Wheelhouse: three fancoils of which two AP5 (9,200 BTU) and one AP10 (16,000 BTU)
- Owner's head: one fancoil AP3 (6.200 BTU)
- Dining: two fancoils AP8 (12.500 BTU)
- Port guest cabin: one fancoil AP5 (9.200 BTU)
- - Commander's cabin: one fancoil AP1 (4.480 BTU)
- Each area has its own control panel making it independent

**Equipment**

- One telescopic boat hook
- Fender lines: 24 m (78' 9")
- Eight fenders
- One Owner's manual
- One wooden boat model
- One set of stainless steel cutlery
- One set of glasses
- Two bags with logo for storing the manuals
- One stainless steel scheduled maintenance kit
- Six mooring lines
- Two anchor chain stoppers
- eight black fender covers
- One AZIMUT document folder
- One AZIMUT warranty service booklet
- One set of porcelain plates
- Four floating keyrings
- One remote control holder with logo

The company is not liable for validity of the information provided by the yacht-owner (images, specification of the yacht, list of equipment installed, its operability, engine hours, legal aspects). Actual engine hours are indicated at the moment of initial information placement and gets further periodically updated. Detailed information and characteristics will be provided on buyer's request and indicated in the contract.

27 METRI

YEAR  
2022

LENGTH  
26.78 m

VAT NOT PAID | WITHOUT OPTIONS

By request

---

- One pin wrench for locking stainless steel pins

- One cover for flybridge cushions, flybridge cockpit instruments, and cockpit