



YACHTS FOR SALE

Azimut 78

YEAR
2020

LENGTH
23.64 m



YEAR
2020LENGTH
23.64 m

VAT NOT PAID

Azimut 78**By request**

Length overall	23.64 m
Beam overall	5.75 m
Draft	1.77 m
Material	Carbon fiber+ GRP
Cabines	4 + 1
Head compartments	4 + 1
Engine	3 x VOLVO IPS 1200 (900 HP) / 3 x VOLVO IPS 1350 (1000 HP)
Fuel capacity	5000 l
Water capacity	1100 l
Max speed	31.00 knots
Cruising speed	27.00 knots
Range	340 nm
Location	Italy

The company is not liable for validity of the information provided by the yacht-owner (images, specification of the yacht, list of equipment installed, its operability, engine hours, legal aspects). Actual engine hours are indicated at the moment of initial information placement and gets further periodically updated. Detailed information and characteristics will be provided on buyer's request and indicated in the contract.



Exterior Azimut 78

Exterior Azimut 78





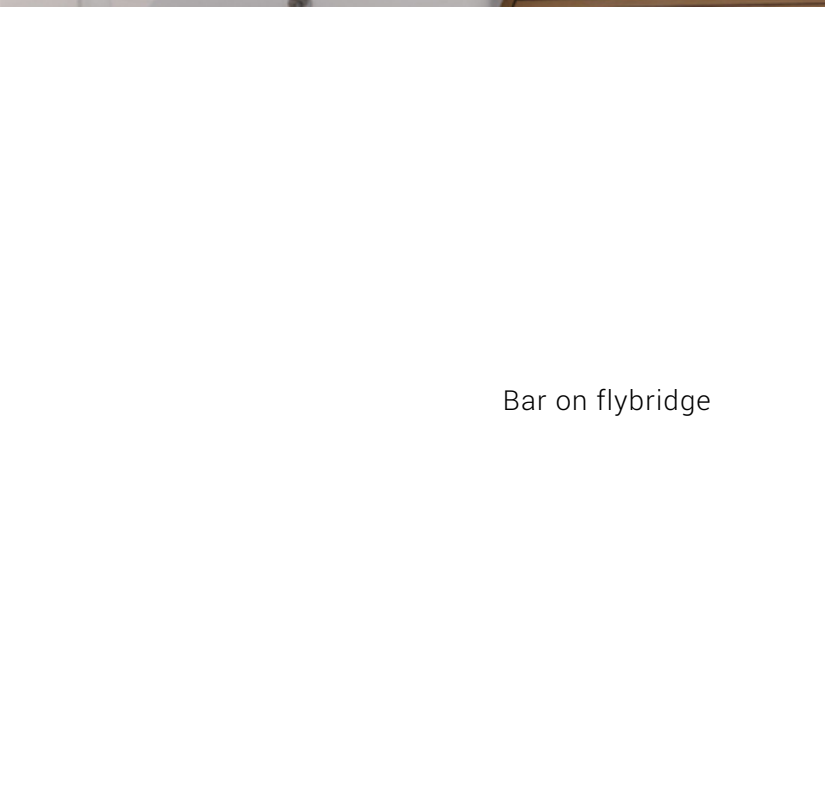
Exterior Azimut 78

Flybridge





Dining area on flybridge



Bar on flybridge





Lounge area on aft fly

Lounge area on bow





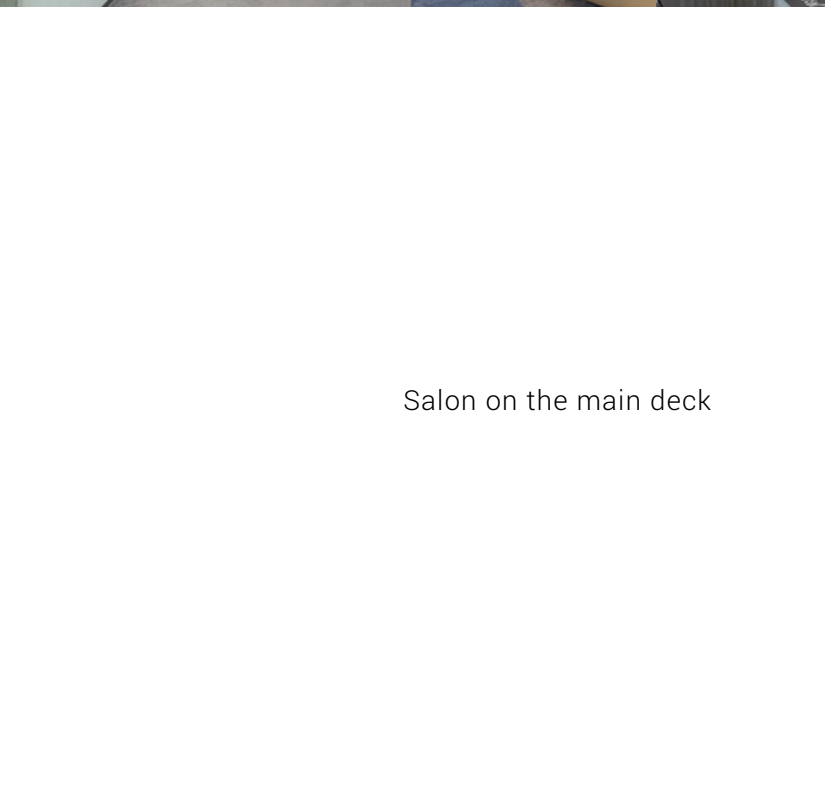
Dining area in cockpit

Cockpit





Salon on the main deck

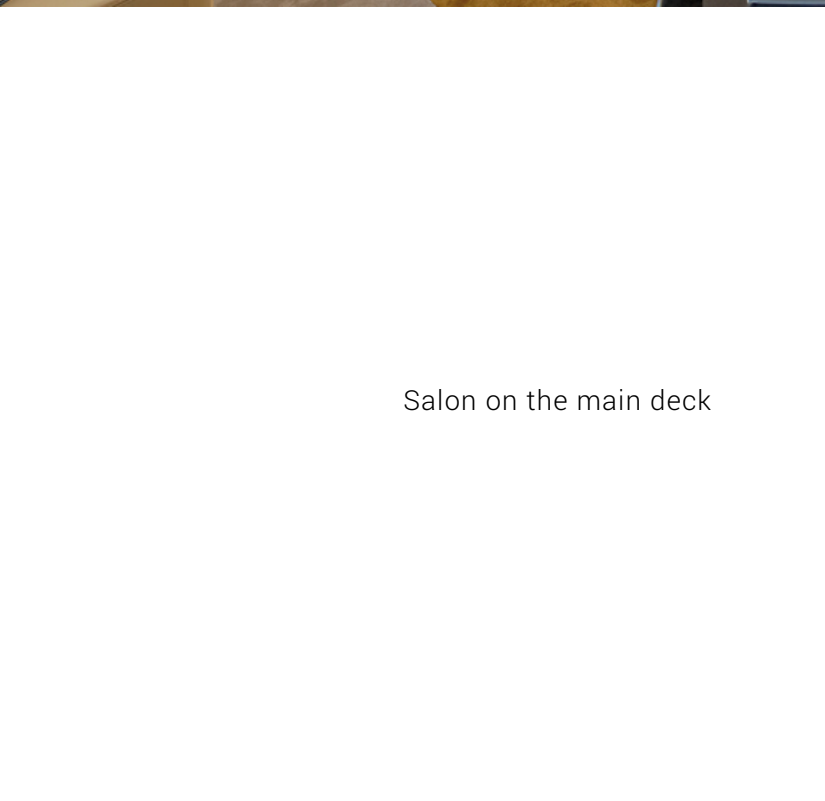


Salon on the main deck





Salon on the main deck



Salon on the main deck





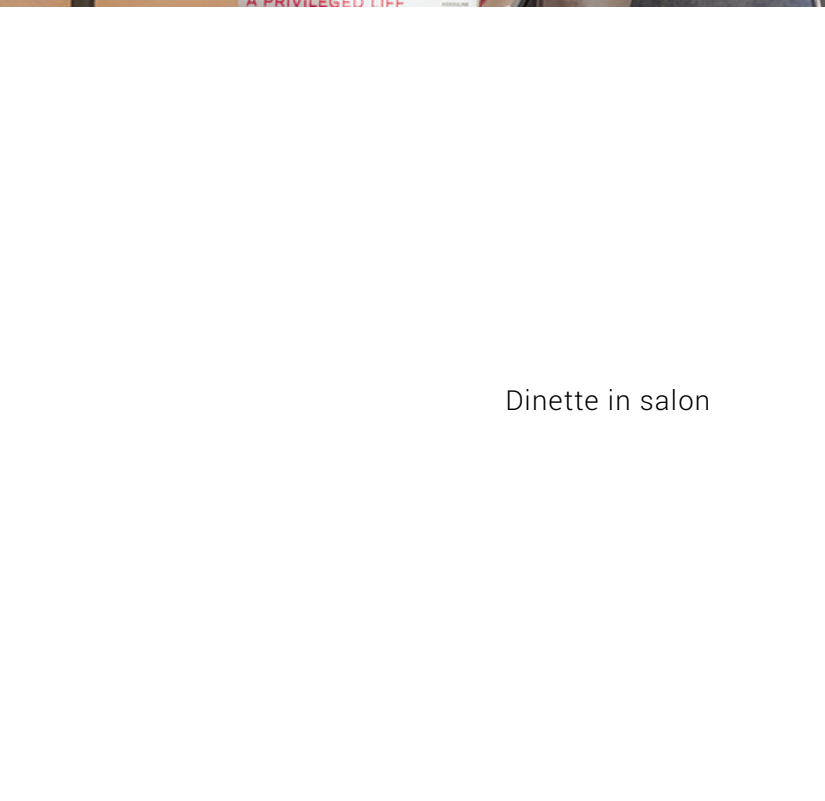
Salon on the main deck

Salon on the main deck





Salon on the main deck

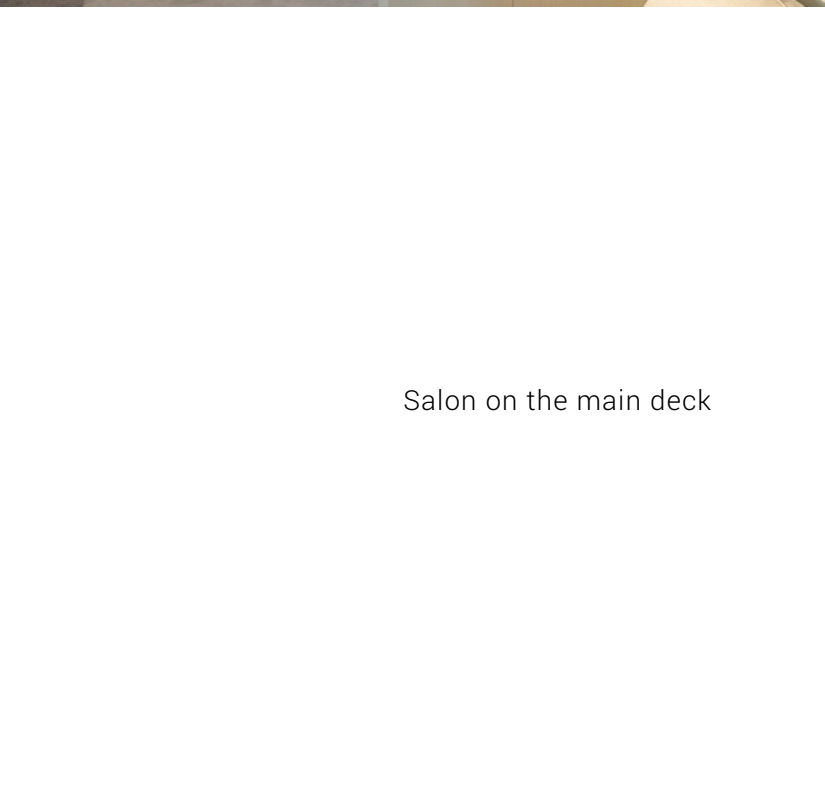


Dinette in salon





Salon on the main deck



Salon on the main deck





Main helm station

Galley





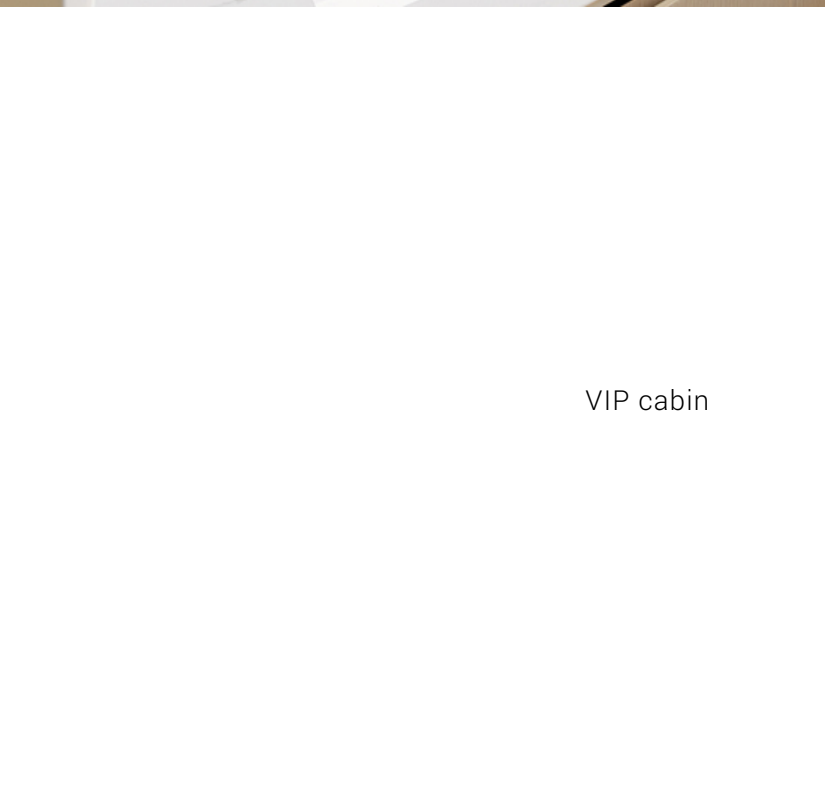
Owner's cabin

Owner's cabin





Owner's head



VIP cabin





Guest cabin on starboard side



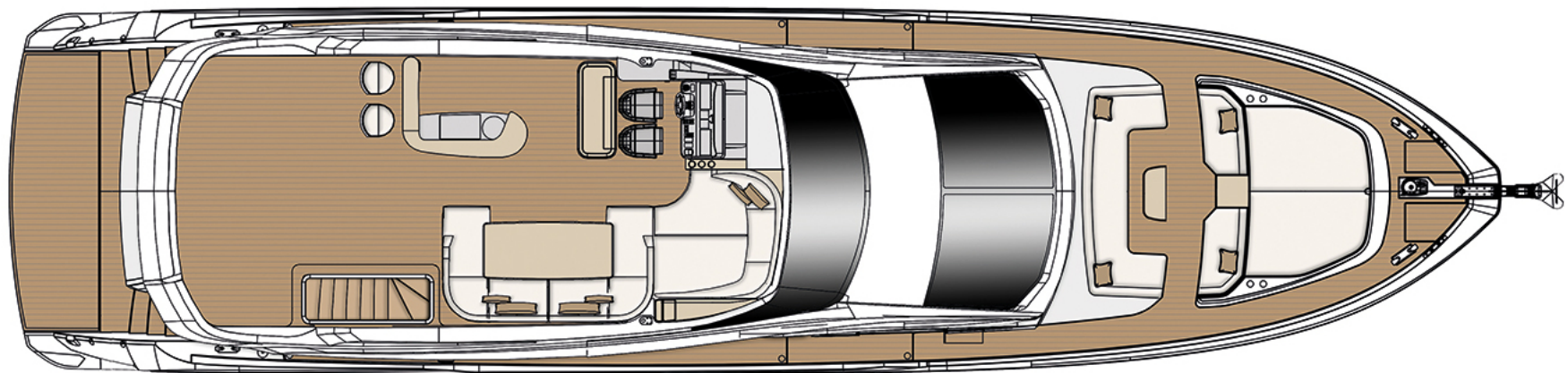
Guest cabin on portside



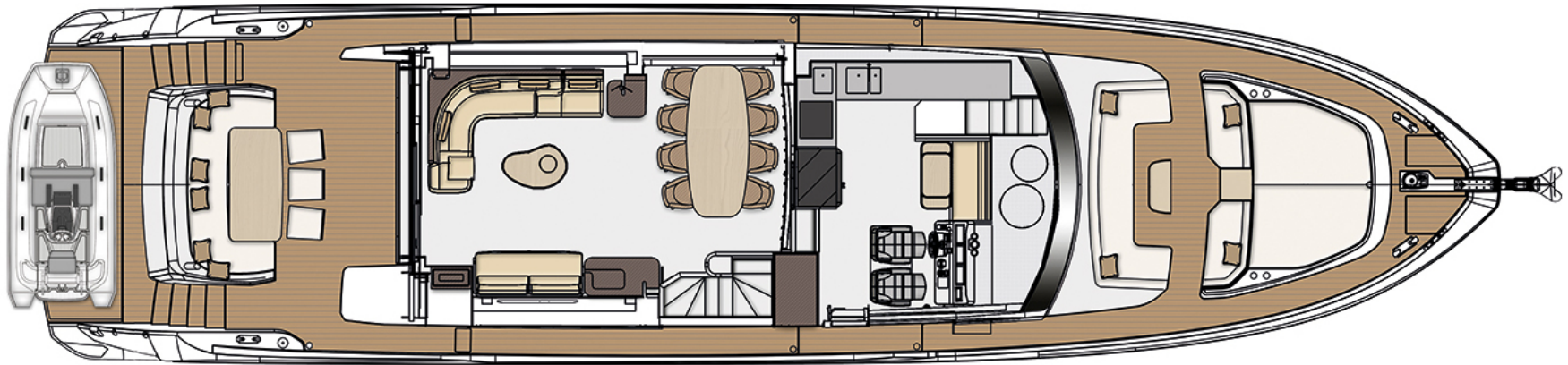
Guest head

Crew cabin

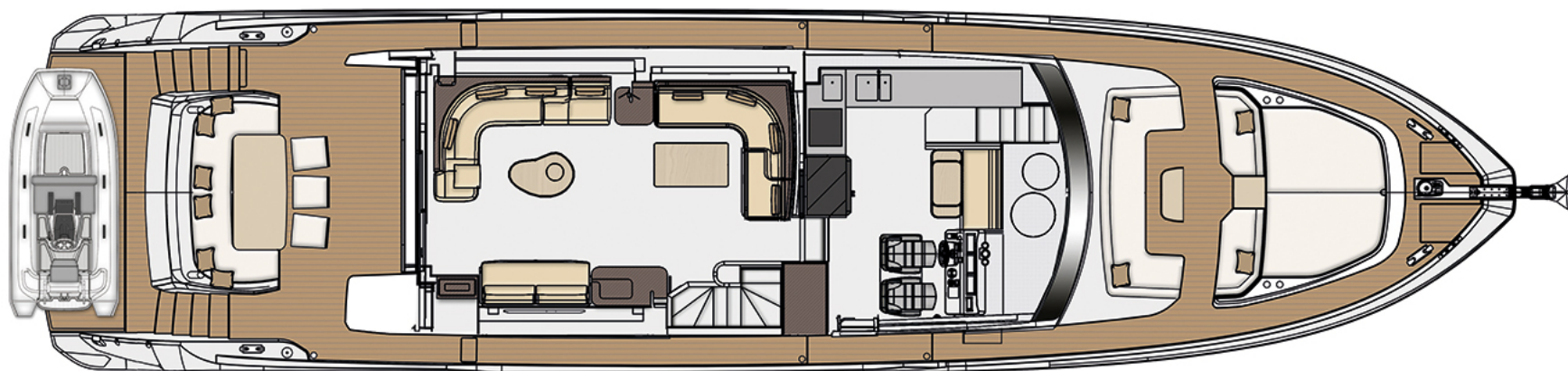




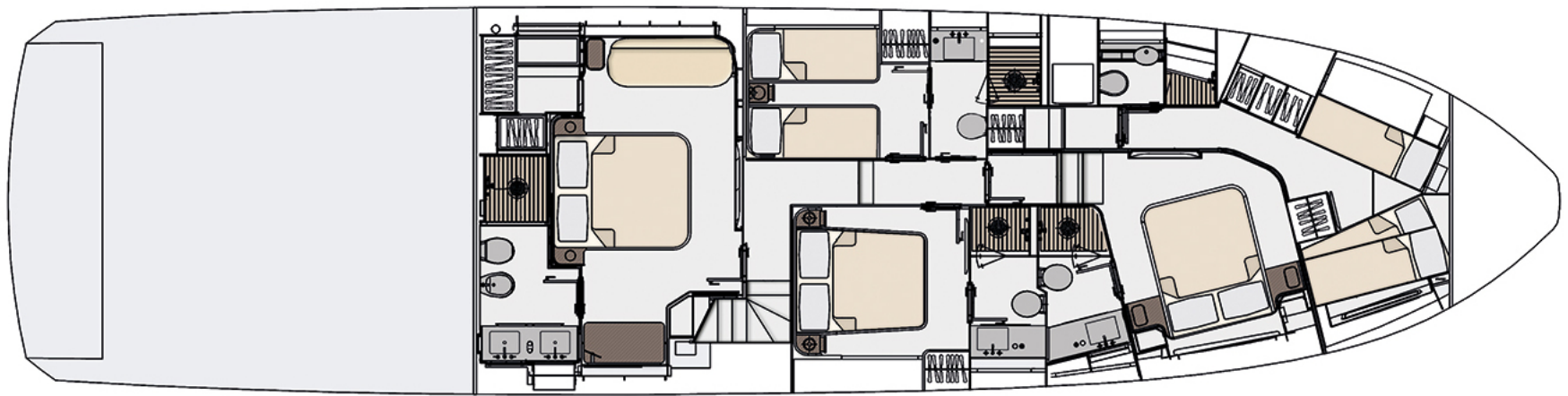
Flybridge



Main deck



Main deck LOUNGE version



Lower deck

YEAR

LENGTH

VAT NOT PAID

2020

23.64 m

By request

Azimut 78

SPECIFICATIONS

Length overall	23.64 m	Beam overall	5.75 m	
Draft	1.77 m	Material	Carbon fiber+ GRP	
Passenger capacity	16	Berths	8 + 2/3	
Cabines	4 + 1	Head compartments	4 + 1	
Engine	3 x VOLVO IPS 1200 (900 HP) / 3 x VOLVO IPS 1350		Fuel capacity	5000 l
Water capacity	1100 l	Holding tank capacity	450 l	
Grey water capacity	450 l	Max speed	31.00 knots	
Cruising speed	27.00 knots	Range	340 nm	
Displacement	57.97 t	Interior designer	Achille Salvagni Architetti	
Exterior styling & concept	Alberto Mancini			

The company is not liable for validity of the information provided by the yacht-owner (images, specification of the yacht, list of equipment installed, its operability, engine hours, legal aspects). Actual engine hours are indicated at the moment of initial information placement and gets further periodically updated. Detailed information and characteristics will be provided on buyer's request and indicated in the contract.

Azimut 78

YEAR
2020

LENGTH
23.64 m

VAT NOT PAID
By request

ADDITIONAL OPTIONS

Advance Package

- Additional Kohler generator 20,5Kw
- Dècor Upgrade
- Extra conduits
- Miele appliances (upgrade for oven and cooktop)
- Watermaker predisposition (salt water - fresh water - electrical)
- Black Water Tank Washing System
- Electric searchlight with additional control on second helm
- Grey Water Tank Washing System
- Shore water connection
- Mesh covers for windows

Additional optionsMain system

- 3 x VOLVO IPS 1350 (1000 hp) upgrade
- Seakeeper Stabilizer NG26
- Bow thruster 11.4 kW

Exterior

- Bow sun shade with removable carbon fiber poles for sunbathing area and sitting area
- Cockpit awning (automatic)
- Dimmer lights on fly
- Teak on flybridge deck
- Flybridge hatch
- Nr. 2 exterior teak stools for flybridge bar
- Bow table in teak
- Co-pilot seat on fly
- Hard top
- Upgraded standard external cushions in Batyline (specify code)
- Lounge furniture on aft fly (two love seats in Batyline) with coffee table
- Underwater lights under sponsons (2X2) and transom (3) Oceanled S3124S

Interior

- Dimmer lights for interiors (master cabin, VIP, guests cabin)

Azimut 78

YEAR
2020

LENGTH
23.64 m

VAT NOT PAID

By request

- Lacquered electric blue inserts on forward salon bulkhead
- Co-pilot seat in main helm
- Toilet with bidet faucet feature in master head
- Wooden floor in helm station
- Wooden floor in main deck

Appliances

- Icemaker on fly
- Barbecue on fly bar top
- Winecooler in galley

Electronics

- Garmin AIS 800
- Video Cameras in engine room, cockpit and flybridge

- Third bed in crew cabin
- Mosquito net for portholes
- Toilet with bidet faucet feature in VIP and guest cabins
- Wooden floor in lower deck hallway

- Washer and dryer in crew cabin (two separate units)
- Dishwasher

- Volvo Glass Cockpit Gold Package: Flybridge: 2 x Volvo Glass Cockpit 8616xsv 16" multitouch MFD with sonar, GRID 20 Remote Controller, GHS 11i Wired VHF Handset with Active Speaker, VHF Antenna, GPS 19x, Garmin GMR Open Array Radar; Main helm station: 2 x Volvo Glass Cockpit 8616xsv 16" multitouch MFD with sonar, GRID 20 Remote Controlle, Volvo Autopilot, DST 800 Transducer Speed, Depth & Temp, Chart Reader, GHS 11i Wired VHF Handset with active speaker, VHF 315i, GMS 10 HUB Ethernet.

The company is not liable for validity of the information provided by the yacht-owner (images, specification of the yacht, list of equipment installed, its operability, engine hours, legal aspects). Actual engine hours are indicated at the moment of initial information placement and gets further periodically updated. Detailed information and characteristics will be provided on buyer's request and indicated in the contract.



Azimut Yachts Montenegro

Montenegro, Tivat, Porto Montenegro,
Tara Building, office T4

+382.69.237.700

www.azimutyachts.me

We provide full legal support of transactions, assistance in preliminary technical survey, shipping to the required region, insurance, crew selection and hiring and vessel registration in all main registers.

Motor yacht Azimut 78: viewing, inspection, sea trial and transaction are carried out under MYBA terms.