



YACHTS FOR SALE

Azimut S7

YEAR
2023

LENGTH
21.37 m


AZIMUT
YACHTS
MONTENEGRO

Azimut S7

YEAR
2023

LENGTH
21.37 m

VAT EXCLUDED
By request

Length overall	21.37 m
Beam overall	5.30 m
Draft	1.69 m
Material	GRP Carbon
Cabines	4 + 1 Crew
Head compartments	3 + 1 Crew
Engine	3 x VOLVO PENTA D13 - IPS 1050 - 800 hp
Fuel capacity	3800 l
Water capacity	1000 l
Max speed	35.00 knots
Cruising speed	28.00 knots
Range	290 nm
Location	Italy

The company is not liable for validity of the information provided by the yacht-owner (images, specification of the yacht, list of equipment installed, its operability, engine hours, legal aspects). Actual engine hours are indicated at the moment of initial information placement and gets further periodically updated. Detailed information and characteristics will be provided on buyer's request and indicated in the contract.



Exterior Azimut S7

Exterior Azimut S7





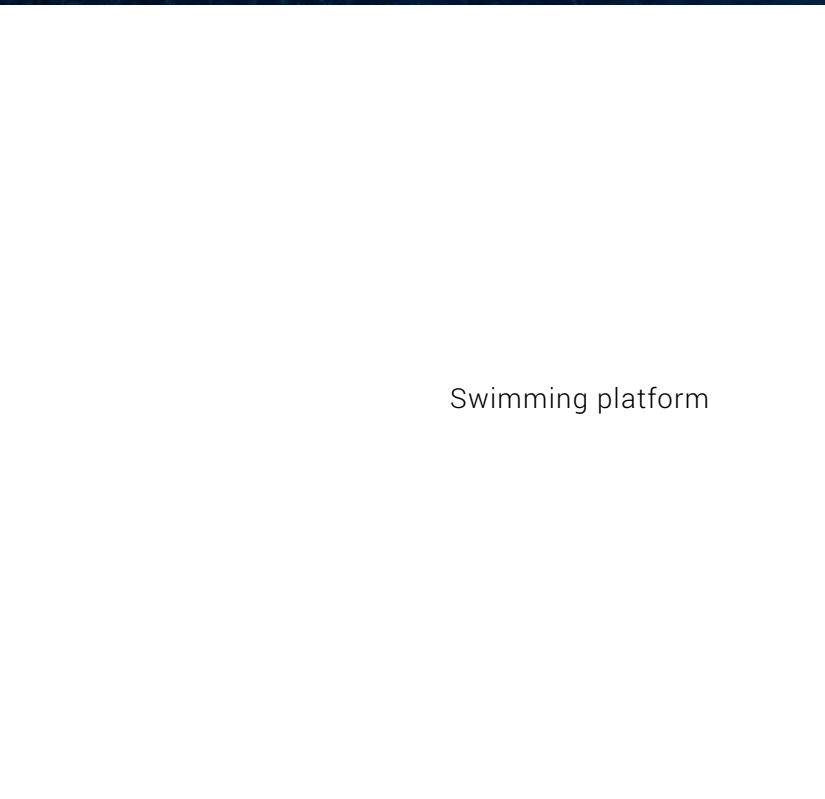
Exterior Azimut S7



Exterior Azimut S7



Aft sunbathing area



Swimming platform





Sunbathing area on bow



Lounge area on bow



Lounge area on bow. Bimini tent (option)



Carbon radar mast



Sport Flybridge (only for yachts version Sport Fly)

Helm station on flybridge





Sunbathing area on aft flybridge



Steps from cockpit to flybridge



Wet bar in cockpit



Cockpit



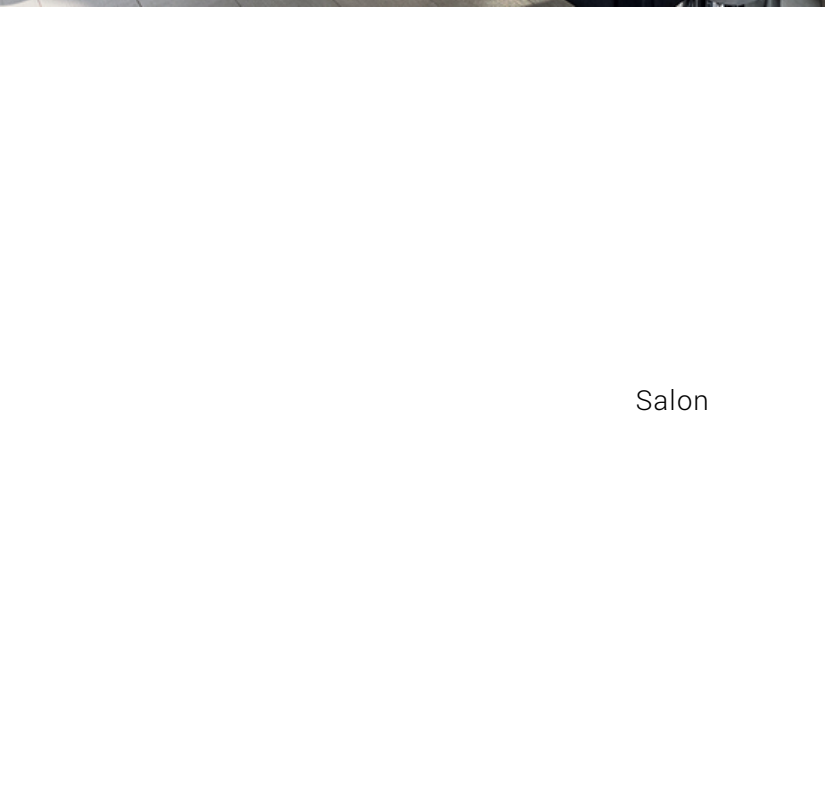
Cockpit and salon

Salon





Salon



Salon





Salon

Hard top with sliding section (only for the yacht
version Coupe)





Main helm station

Galley





Steps to lower deck

Steps to lower deck





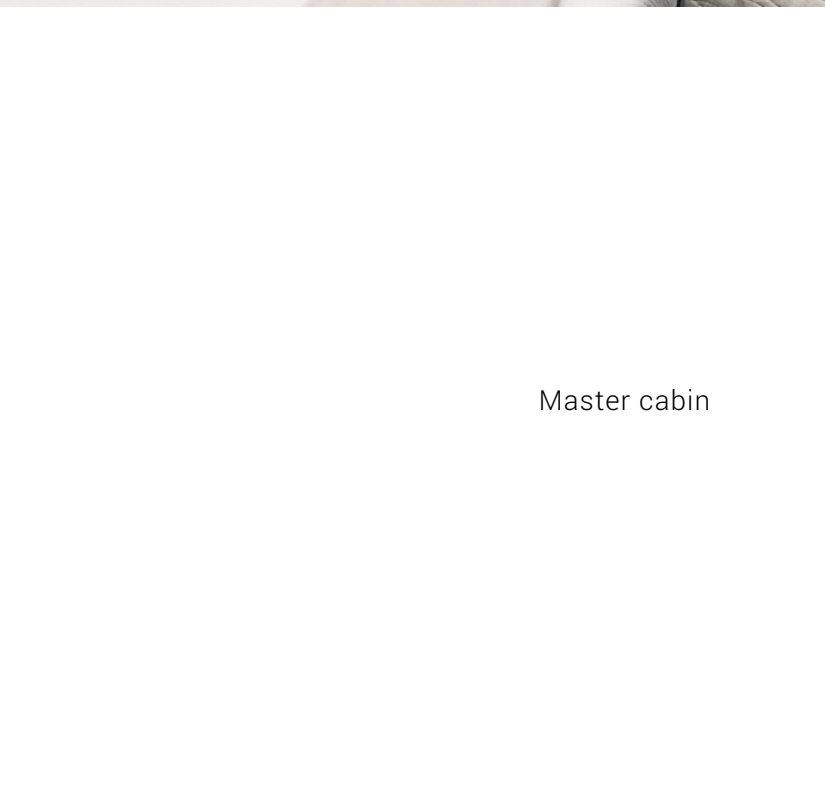
Master cabin

Master cabin





Master cabin



Master cabin





Master wardrobe

Master head





VIP cabin

VIP head





Guest cabin

Guest head





Crew cabin

Carbon Tech Generation. Think Big

S7

CARBON TECH

S
COLLECTION

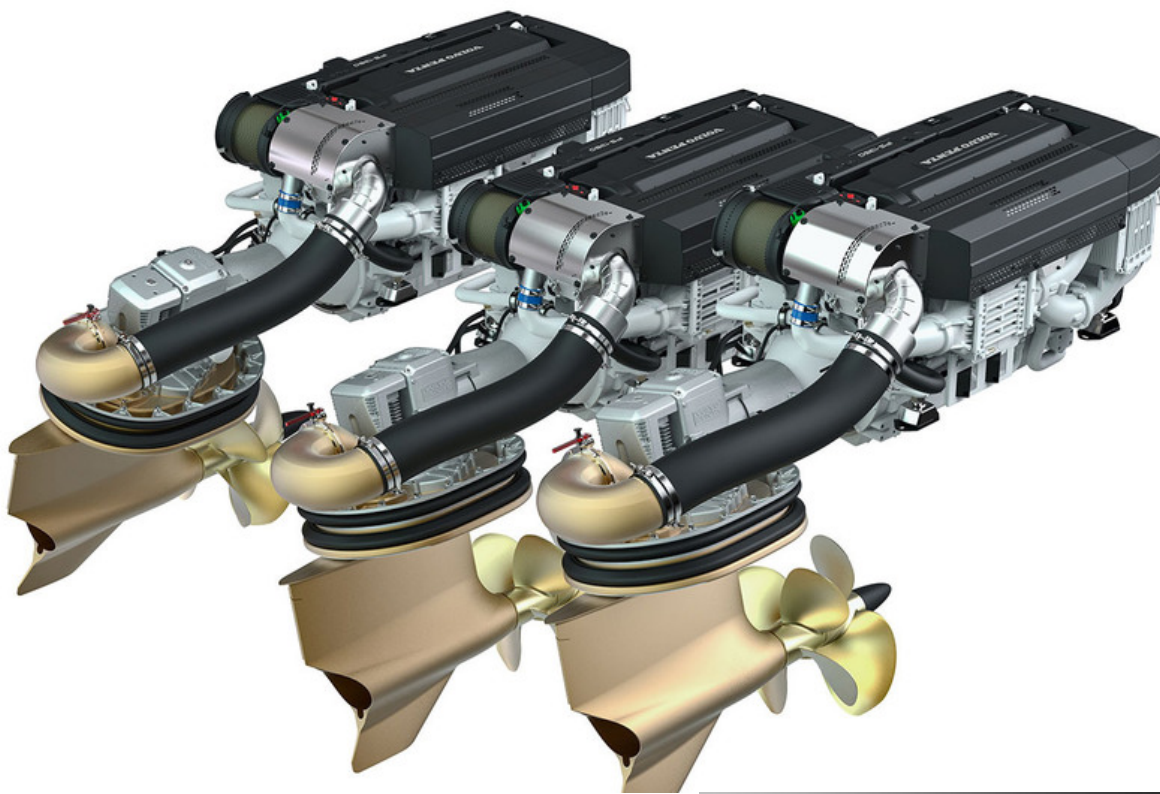
Carbon fiber is the design choice to provide increased volumes and extended surfaces within same weight ranges, granting excellent levels of static and dynamic stability.

Carbon Fiber

Deckhouse	☆
Deck	
Flydeck	☆
Upper FDW Part Flydeck	☆
Radar Arch/ Mast*	☆
Platform	☆

* Sport-fly version

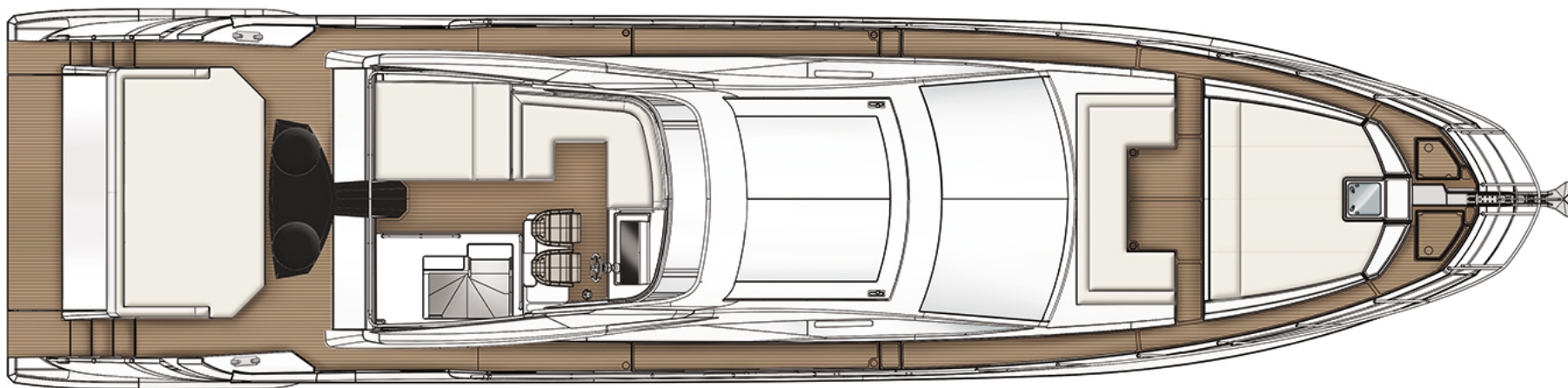




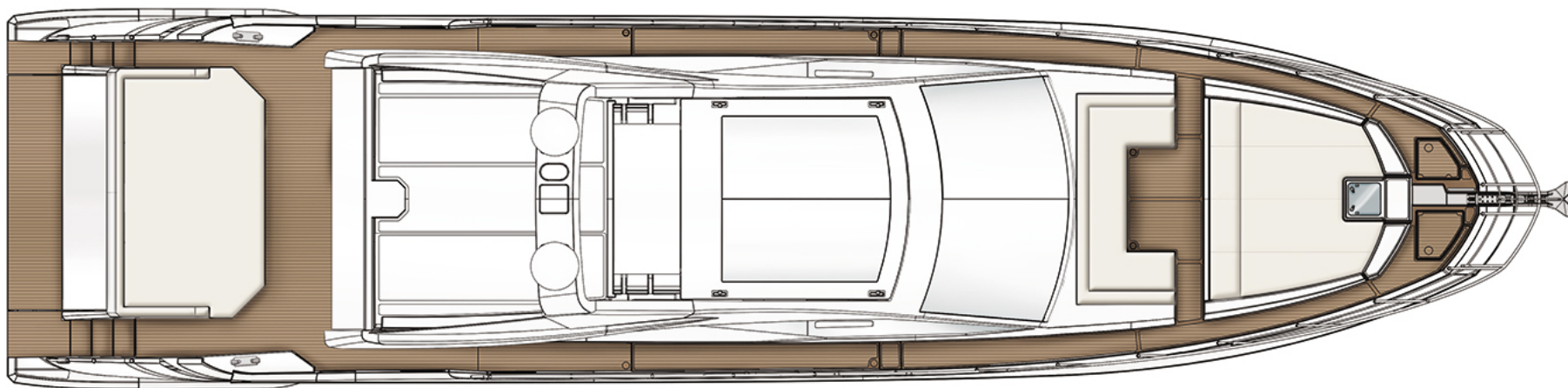
Triple IPS propulsion

Active Trim Control (ATC)

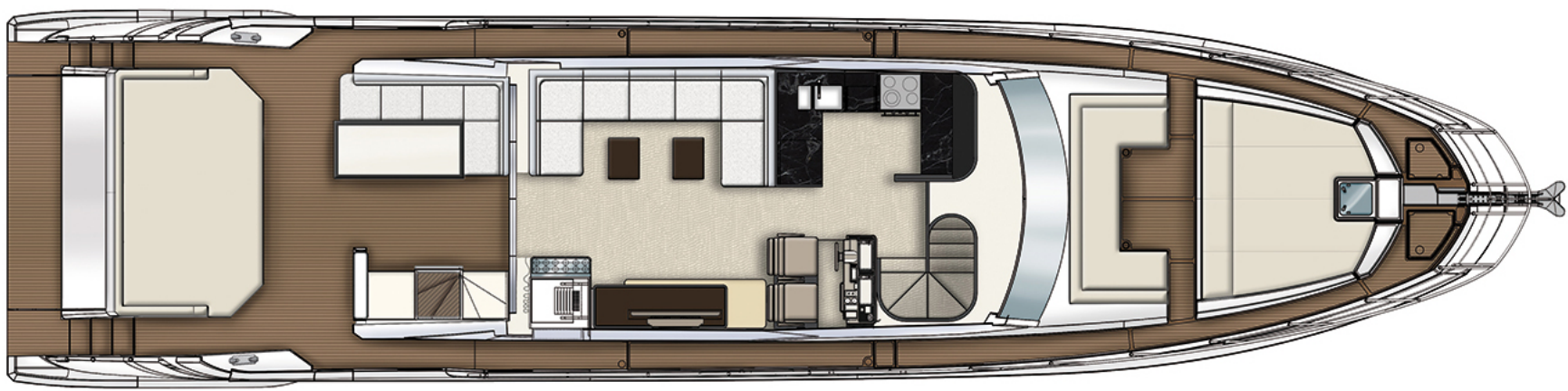




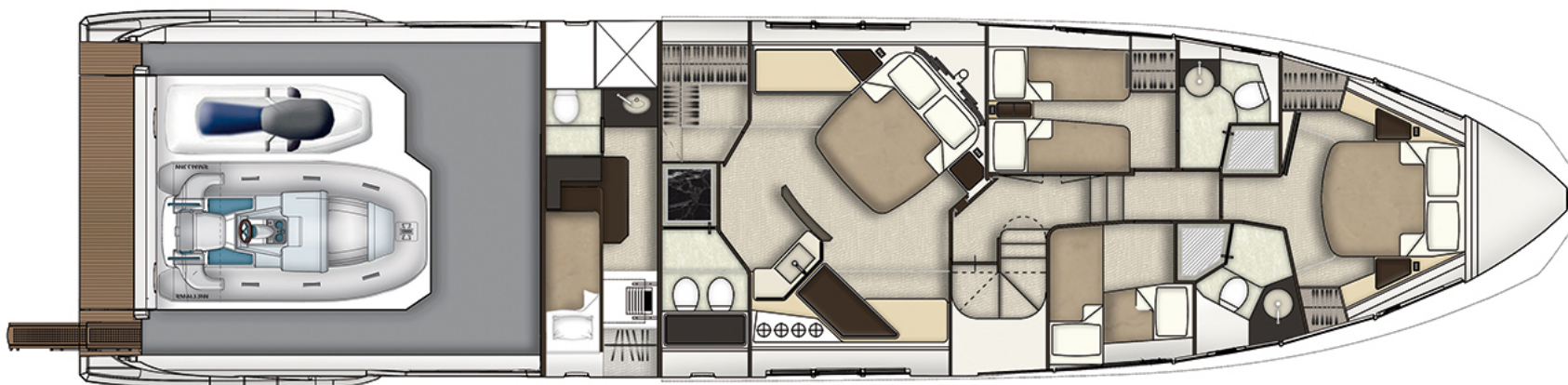
Sport Fly Version



Coupe Version (Hard top)



Main Deck



Lower Deck

Azimut S7

YEAR
2023

LENGTH
21.37 m

VAT EXCLUDED
By request

SPECIFICATIONS

Length overall	21.37 m	Beam overall	5.30 m
Draft	1.69 m	Material	GRP Carbon
Passenger capacity	14	Berths	8 + 2 Crew
Cabines	4 + 1 Crew	Head compartments	3 + 1 Crew
Engine	3 x VOLVO PENTA D13 - IPS 1050 - 800 hp	Fuel capacity	3800 l
Water capacity	1000 l	Holding tank capacity	350 l
Grey water capacity	200 l	Max speed	35.00 knots
Cruising speed	28.00 knots	Range	290 nm
Displacement	45.40 t	Interior designer	Francesco Guida
Exterior styling & concept	Stefano Righini		

The company is not liable for validity of the information provided by the yacht-owner (images, specification of the yacht, list of equipment installed, its operability, engine hours, legal aspects). Actual engine hours are indicated at the moment of initial information placement and gets further periodically updated. Detailed information and characteristics will be provided on buyer's request and indicated in the contract.

Azimut S7

YEAR
2023

LENGTH
21.37 m

VAT EXCLUDED

By request

ADDITIONAL OPTIONS

- Advance Package
- Hydraulic ladder in stainless steel and teak connecting transom to swim platform when lowered
- Dishwasher
- Cockpit docking station
- Hi-lo system for TV in salon (TV not included)
- Hauling-launching system for jetski
- Winecooler in salon
- Domotic lights in saloon
- Garmin AIS
- Garmin Gold package
- Barbecue in cockpit
- Backlight logo
- Teak on fly
- Wc Tecma in crew head
- Wc Tecma in guest head
- Upgrade standard external cushions in Batyline fabric
- Wooden floor in saloon
- Seakeeper NG18
- Dinette sofa on fly with cabon look table
- Telescopic gangway
- Motorized shore power cord reel
- Underwater lights (n.3 on transom and n.2 on sides, one for each side)
- Spreader lights on aft fly
- Bow thruster
- Predisposition for SAT TV Antenna
- Ice maker in cockpit furniture
- Painted hull and gunwhale
- Luxury lights package for interior
- Washer and dryer (two separate units)
- Refrigerator for cockpit furniture (below stairs to flybridge deck)
- Copilot seat at main helm
- Electric bimini on fly
- Wc Tecma in master head
- Wc Tecma in VIP head
- Cockpit table with carbon finishing top
- Copilot seat on fly
- Safe in master cabin
- Foredeck lounge with convertible bench/sunbed in Batyline fabric

The company is not liable for validity of the information provided by the yacht-owner (images, specification of the yacht, list of equipment installed, its operability, engine hours, legal aspects). Actual engine hours are indicated at the moment of initial information placement and gets further periodically updated. Detailed information and characteristics will be provided on buyer's request and indicated in the contract.

Azimut S7

YEAR
2023

LENGTH
21.37 m

VAT EXCLUDED
By request

-
- Furniture on fly with barbecue and fridge
 - Additional furniture in master head
 - Stainless steel anchor
 - Luxury lights package for exterior
 - Bow sunshade with carbon poles
 - Galley top statuarietto quartz
 - Cockpit awning (electric)
 - Chest drawer and armchair in master cabin
 - N.2 empty domes
 - Audio Video package SMART
 - Teak on side decks
 - Barkley carpet in lower deck (stairs, corridor and cabins)

Azimut S7

YEAR
2023

LENGTH
21.37 m

VAT EXCLUDED
By request

STANDART SPECIFICATION

Sunbed area (Flybridge)

- Accessible from cockpit, through ladder
- "C" shaped dinette on instrument board side with cushion protection covers
- Plexiglas flybridge screen with stainless steel frame
- Plexiglass two-sector hatch with aluminum frame and stainless steel rails
- Instrument support mast consisting of carbon base, antenna support mast in matt black painted steel
- - Horn, anchor winch, chain washing pump, MUTE and flybridge light activation switches
- - Volvo Penta maneuvering joystick with joystick driving
- - Second VHF station
- - 12V socket
- S7 logo, placed outside, one per side
- Helm seat with seat cover
- Non-slip floor
- Side plexiglas with steel moldings
- Stainless steel handrails / grabrails
- Dashboard consisting of:
 - - BRONZE PACKAGE electronic instrumentation (chartplotter with integrated monitoring system and water temperature, depth, speed, and chain length reading)
 - - Volvo Penta engine handles with single lever, automatic interceptors and LOW SPEED system
 - - Adjustable steering wheel
 - - engine control instrumentation on Volvo 7" display with built-in automatic pilot and trip computer
- Dashboard cover

Bow / walkaroundsBow

- 40 kg galvanized steel Delta anchor
- Double hatch giving access to chain locker with drainage and fenders compartment; fiberglass doors with gas pistons
- Anchor winch and chain washing pump controls
- Stainless steel anchor line anti-rubbing protection
- Bow hatch (emergency exit) from VIP cabin on fore sunbed area
- Stainless steel anchor roller
- Galvanized chain, diameter 10 mm, length 75 m
- 2000W/24V anchor winch
- Chain washing pump
- 2 oval stainless steel cleats

Azimut S7

YEAR
2023LENGTH
21.37 m

VAT EXCLUDED

By request

- Fore sunbed area cushions with cushion covers and steel glass racks (4)
- Windscreen wiper system

Walk arounds

- Stainless steel pulpit
- Fiberglass boarding gates
- Refueling and water filling plugs, black water suction points on walk arounds
- Semi-automatic watertight side door leading down to crew cabin on starboard side of superstructure

Cockpit and platformCockpit

- Can be accessed from outside via the gangway and from the stern platform via 2 connecting stairways
- - 2T-head cleats
- - 2 1500W/24V mooring winches with recessed controls under the mooring stations
- Aft sunbed cushions with cushion covers
- Cockpit ceiling-mounted LED lighting + dimmer
- External bar cabinet in fiberglass with sink and barbecue
- Engine room access ladder
- 2 port and starboard below cleat lockers with controls for manual bilge pump and activation of engine room fire extinguishing system (only starboard side)

- Bow dinette cushions with cushion covers
- Side net window and windscreen covers

- Rubber rub-rail with knurled stainless steel section
- Walkarounds with anti-slip floor
- Tempered glass side windows of deckhouse bonded to GRP structure
- 2 amidship stainless steel cleats on washboard
- Azimut logo, placed on side air intakes, one per side

- Steel aft gates (2)
- Mooring stations with:
- - 2 stainless steel chocks
- Lockers under the sunbed area
- Stairway leading to sunbed area with steel structure and teak steps partially integrated in the cockpit cabinet
- Ceiling-mounted watertight loudspeakers
- Cockpit hatch leading to the engine room, inserted in the generator unloading fix hatch on floor board
- Emergency panel-battery cut-out with controls for: battery cut-out (service, engine and generator)

The company is not liable for validity of the information provided by the yacht-owner (images, specification of the yacht, list of equipment installed, its operability, engine hours, legal aspects). Actual engine hours are indicated at the moment of initial information placement and gets further periodically updated. Detailed information and characteristics will be provided on buyer's request and indicated in the contract.

Azimut S7

YEAR
2023

LENGTH
21.37 m

VAT EXCLUDED

By request

- 2 central below cleat lockers with lines storing compartment
- Cockpit floor in teak

Platform

- Access from cockpit via 2 fiberglass stairways with teak steps
- 2 cleats for mooring the tender
- Garage pivoting hatch operated through electro-hydraulic mechanism with rotating actuators:
 - - hydraulic block in 3 positions: 1. door closed / 2. door horizontal / 3. door completely open for launch.
- Teak decking and platform in closed position
- Manual foldaway swimming ladder installed on starboard side
- - GARAGE DIMENSIONS: 3 m x 3 m
- - JET SKI: SEA DOO SPARK

Wheelhouse

- Internal dashboard consisting of:
 - - BRONZE PACKAGE electronic navigation instrumentation (chartplotter with integrated monitoring system and water temperature, depth, speed, and chain length reading)
- - Volvo Penta engine handles with single lever, automatic interceptor and LOW SPEED system

- 2 port and starboard below cleat lockers with shore power socket
- Saloon entrance door with steel fix frame, doors in painted aluminum and tempered glass, 4 panels of which 3 mobile and completely foldable to the right
- 2 stainless steel grabrails leading down to stern platform
- Fold-away electro-hydraulic gangway (starboard side) made of 316 L stainless steel and teak grating, 2.9 m long, lifting capacity of 150 kg.
 - - maximum capacity of door when closed: 300 kg (max. load on platform)
 - - maximum capacity of door when open: 435 kg (tender or jet ski +1 person to move it)
- Bathing platform, with door open, with dimensions 1.5m x 3.2m (4.8 sgsm) and anti-slip floor
- Shower with hot and cold mixer tap
- INSTALLABLE TENDER:
 - - TENDER: WILLIAMS TurboJet 325
- - Engine control instrumentation on Volvo 7" display with built-in automatic pilot and trip computer
- - Communication systems (VHF)
- - Magnetic compass

The company is not liable for validity of the information provided by the yacht-owner (images, specification of the yacht, list of equipment installed, its operability, engine hours, legal aspects). Actual engine hours are indicated at the moment of initial information placement and gets further periodically updated. Detailed information and characteristics will be provided on buyer's request and indicated in the contract.

Azimut S7

YEAR
2023

LENGTH
21.37 m

VAT EXCLUDED
By request

- - Volvo Penta maneuvering joystick with joystick driving
- - Horn, anchor winch, chain washing pump, windscreen wipers, windshield washers, engine battery parallel, and MUTE activation switches
- - Emergency panel
- Storage under helm seats

Saloon / Dinette and Galley

- Carpeted floors
- Storage cabinet on starboard side
- Electro-hydraulically operated panoramic roof window and electric control
- LED lighting

Galley

- Positioned on port side
- Lapitec worktop
- Ceramic glass 4-hob range and silicone pot holder
- Extraction hood on range with external extraction
- Drawer-type fridge 190 l

Corridor

- Central corridor leading down to lower deck with carpeted floor
- Grabrails

- - USB socket
- - Adjustable air conditioning outlets (x2)
- - Adjustable leather-covered steering wheel
- Electrically adjustable helm seat
- Electrically openable window
- "C" shaped sofa on port side with 2 transformable coffee tables/dining table
- Glass racks display case on starboard side
- Saloon side blinds
- Saloon doorblind
- Wooden flooring
- 1 steel double sink
- Electrically openable window
- Microwave oven + grill 20 l
- Drawer-type freezer 95 l under the helm seat storage cabinet
- LED lighting

The company is not liable for validity of the information provided by the yacht-owner (images, specification of the yacht, list of equipment installed, its operability, engine hours, legal aspects). Actual engine hours are indicated at the moment of initial information placement and gets further periodically updated. Detailed information and characteristics will be provided on buyer's request and indicated in the contract.

Azimut S7

YEAR
2023

LENGTH
21.37 m

VAT EXCLUDED
By request

- Wall storage

Owner's cabin

- Located midship
- Mattress, pillows and bedspread
- Upholstered headboard
- Rectangular side windows with 6 sectors and 1 rectangular openable portlight each side
- LED lighting
- Provision for TV system on curved bulkhead in front of the bed
- Separate walk-in wardrobe containing chest of drawers, hanger bar, and shelves
- Carpet flooring (wood floor in front of the washbasin)
- Sink cabinet behind the curved bulkhead in front of the bed, with sink under the top, steel blender, screen mirror, marble washbasin top, and storage cabinet under the washbasin

Owner's head

- TECMA toilet
- Shower with slide bar and ceiling showerhead
- Floors and bulkhead upholstery in wood essence
- 1 openable round portlight with Venetian blinds
- Chrome head accessories

Starboard side guest cabin

- Manually openable double bed; storage underneath
- Wood essence furniture
- Bedside tables, one of which with storage
- 2 chest of drawers on starboard bulwark
- 2 headboard wall lights
- Courtesy lights
- Access to owner's head from aft door, starboard side
- Manual side Venetian blinds
- Shower enclosure with glass door, metal laminated bulkheads and grating
- Cabinet in wood essence and lacquered behind toilet
- LED lighting
- 1 air extractor
- A/C outlet

The company is not liable for validity of the information provided by the yacht-owner (images, specification of the yacht, list of equipment installed, its operability, engine hours, legal aspects). Actual engine hours are indicated at the moment of initial information placement and gets further periodically updated. Detailed information and characteristics will be provided on buyer's request and indicated in the contract.

Azimut S7

YEAR
2023

LENGTH
21.37 m

VAT EXCLUDED
By request

- 2 single beds, placed at"L"
- Wood essence furniture
- 1 wardrobe with hanger bar and shelves
- shelf on the bulwark
- 1 wall light for upper bed, 1 night light for lower bed
- Panoramic window with openable built-in portlight
- Carpeted floor

Port side guest cabin

- 2 single beds
- Wood essence furniture
- 1 wardrobe on bulwark
- 1 shelf on the bulwark
- Underbed locker
- LED lighting
- Access to head
- Carpeted floor
- Escape hatch on ceiling

Port guest head

- Access from port guest cabin and from corridor

- Mattresses, pillows
- Upholstered headboard
- 2 wall units with lacquered door
- Storage under bottom bed
- LED lighting
- Provision for TV system
- Venetian blind

- Mattresses, pillows
- Wooden headboard
- 2 wall units with lacquered door
- 1 bedside table for both beds
- 2 wall lights
- Panoramic window with openable built-in portlight
- Provision for TV system
- Venetian blind

The company is not liable for validity of the information provided by the yacht-owner (images, specification of the yacht, list of equipment installed, its operability, engine hours, legal aspects). Actual engine hours are indicated at the moment of initial information placement and gets further periodically updated. Detailed information and characteristics will be provided on buyer's request and indicated in the contract.

Azimut S7

YEAR
2023

LENGTH
21.37 m

VAT EXCLUDED
By request

- TECMA toilet
- Openable mirror for access to storage units
- Storage unit under washbasin
- Shower with slide bar
- Lacquered access door interior
- Wood essence floor
- 1 openable round portlight with Venetian blinds
- Chrome head accessories

VIP cabin

- Manually openable double bed; storage underneath
- Wood essence furniture
- 1 wardrobe on starboard side and 1 on port side
- 2 shelves on bulwark (1 per side)
- LED lighting
- Hatchway for exiting fore sunbed area above central ceiling
- Provision for TV system
- Venetian blinds

VIP head

- Access from VIP cabin

- Sink under the top with steel blender
- Washbasin top in marble
- Shower enclosure with glass door and grating
- Matt and gloss wood essence furniture
- Metal laminate-covered bulkheads
- LED lighting
- 1 air extractor
- A/C outlet
- Mattress, pillows
- Fabric and wood essence headboard
- wall units with lacquered doors (1 per side)
- 2 headboard wall lights
- Panoramic windows on both sides with 2 round openable built-in portholes (1 per side)
- Access to head
- Carpeted floor

The company is not liable for validity of the information provided by the yacht-owner (images, specification of the yacht, list of equipment installed, its operability, engine hours, legal aspects). Actual engine hours are indicated at the moment of initial information placement and gets further periodically updated. Detailed information and characteristics will be provided on buyer's request and indicated in the contract.

Azimut S7

YEAR
2023

LENGTH
21.37 m

VAT EXCLUDED
By request

- TECMA toilet
- Openable mirror for access to storage units
- Storage unit under washbasin
- Shower with slide bar
- Laminate-covered bulkheads
- LED lighting
- 1 air extractor
- A/C outlet

Crew room

- Access from starboard walk around, via semiautomatic pantograph door on deckhouse.
- Single bed
- Mattresses, pillows
- Storage compartment against head bulkhead
- Openable portlight and fabric blind
- Sink cabinet with storage under the top
- Escape through opening in saloon display case

Crew head

- TECMA toilet
- Openable portlight and fabric blind

- Sink under the top with stainless steel blender
- Washbasin top in marble
- Shower enclosure with glass door and grating
- Wood essence furniture
- Wood essence floor
- 1 openable round portlight with Venetian blinds
- Chrome head accessories

- Stairs leading down to crew room
- Second foldaway bed
- Wardrobe on starboard bulwark
- Laminated floor
- Laminated furniture
- Grabrails

- Shower with slide bar and grating

The company is not liable for validity of the information provided by the yacht-owner (images, specification of the yacht, list of equipment installed, its operability, engine hours, legal aspects). Actual engine hours are indicated at the moment of initial information placement and gets further periodically updated. Detailed information and characteristics will be provided on buyer's request and indicated in the contract.

Azimut S7

YEAR
2023

LENGTH
21.37 m

VAT EXCLUDED
By request

- Head accessories

Electric systemMain characteristics

- Onboard voltages:
 - - 24V DC from battery set
 - Main electric panel located in crew cabin and engine room:
 - - 230V
 - - 24V
 - Dimmers for light switches in saloon and cockpit.
- - 230V-50Hz AC
- - 12V DC
- - 24V
- Distribution electric panel located in the saloon:
 - - 230V
- Junction boxes are installed in all areas.

Cathodic Protection System

- Zinc anodes
- Volvo ACP (Active Corrosion Protection system)

Generator

- 17 kW generator in the engine room

Shore power sockets

- 2 x 230V, 50A shore power sockets
- The AC power sources are controlled from the main electric panel, with a digital multimeter for the 230V network. The power sources are protected by fuses and their introduction in the network is made by a pushbutton panel or the monitoring system.

Batteries

- Services: 8 AGM 90Ah 24V batteries
- Engines: 4 AGM 90Ah 24V batteries
- Generator: 1 70Ah 12V battery for generator
- 1 80Ah 24V battery charger for service battery set
- 1 30Ah 24V battery charger for engine battery sets

The company is not liable for validity of the information provided by the yacht-owner (images, specification of the yacht, list of equipment installed, its operability, engine hours, legal aspects). Actual engine hours are indicated at the moment of initial information placement and gets further periodically updated. Detailed information and characteristics will be provided on buyer's request and indicated in the contract.

Azimut S7

YEAR
2023

LENGTH
21.37 m

VAT EXCLUDED
By request

- 112Ah 12V battery charger for generator battery sets

Lights and sockets

- AC sockets: 230V for main utility power supply, EU type
- 24V LED lighting

- DC sockets: 12V cigarette lighter type and USB

Electronic navigation instruments

- For STD equipment, see the paragraphs on "Sunbed area" and "Wheelhouse"

- For a detailed list of alternative/additional equipment available, please refer to the Optionals price list

Bilge system

- 5 x 24V automatic motor pumps, located: in engine room (3), in crew room (1) and aft of the owner's cabin (1)

- 5 bilge level alarms
- 3 manual pumps: 2 in engine room, and 1 in owner's cabin

Fire extinguishing system

- Seafire system consisting of 1 FD 1500 M extinguisher, automatic engine switch off control unit, audible alarm, and control panel

Fuel system

- 2 aluminum fuel tanks, total capacity 3800 lt
- 1 electronic diesel level indicators
- Double diesel filters for each engine
- 2 refueling plugs on walk arounds (1 per side)

- 2 vents on bulwark
- 1 mechanical diesel level gage
- 1 filter for generator
- Remote diesel shut-off (engine and generator) via 24V solenoid valve

Fresh water system

- 1000 l stainless steel tank

The company is not liable for validity of the information provided by the yacht-owner (images, specification of the yacht, list of equipment installed, its operability, engine hours, legal aspects). Actual engine hours are indicated at the moment of initial information placement and gets further periodically updated. Detailed information and characteristics will be provided on buyer's request and indicated in the contract.

Azimut S7

YEAR
2023

LENGTH
21.37 m

VAT EXCLUDED
By request

- Water refilling on starboard walkaround
- 1 tank vent on the bulwark
- 1 water heater, 80 l
- Hot/cold water line: distributed via network supplied by water pressure pump or shore connection.
- Provision for water maker

Black water system

- 1 350-liter polyethylene tank
- 2 bulwark tank vents with anti-odor filter
- Tanks suction point on starboard walk around
- Tank washing system with fresh water

Gray water system

- 1 200-liter polyethylene tank
- 2 tank vents on bulwark
- Manual/automatic tank draining

Seawater system

- Engine cooling system: dynamic seawater intakes in keel with anti-block valve on each engine.
- Chain washing pump: 1 seawater intake with valve

- Level sensor
- 1 water pressure pump with electronic control
- Stern water intake
- System that can be isolated by ACORN manifolds
- Toilet fresh water supply

- Level sensor
- Pump for discharging tanks into sea with manual control
- Outboard discharge
- Tecma toilet (with macerator pump). All toilets discharge into a tank

- Internal and external utilities water discharge in central collection tank
- Level sensor
- Tank washing system with fresh water

- Generator cooling system: seawater intakes with filter and valve
- Air conditioning cooling system: seawater intakes with filter and valve

The company is not liable for validity of the information provided by the yacht-owner (images, specification of the yacht, list of equipment installed, its operability, engine hours, legal aspects). Actual engine hours are indicated at the moment of initial information placement and gets further periodically updated. Detailed information and characteristics will be provided on buyer's request and indicated in the contract.

Azimut S7

YEAR
2023

LENGTH
21.37 m

VAT EXCLUDED
By request

Ventilation/extraction

- Head ventilation: with 24V extractors
- Engine room: natural ventilation, forced extraction with one extractor per side
- 2 axial fans in the engine room for air recirculation
- Separator filters

Other systems

- Gas discharge system:
- Hydraulic system:
- - 24V electro-hydraulic pump for pivot garage door
- Engine exhaust: built in the POD
- - Water/fumes separator for generator with side exhaust
- - 24V electro-hydraulic pump for gangway
- - 24V electro-hydraulic pump for openable roof

Air conditioning system

- CONDAR.IA water-based system
- 1 seawater pump with relevant intake
- - Saloon and Dinette: 74000 BTU
- - VIP cabin and head: 12500 BTU
- - Starboard side guest cabin: 6200 BTU
- Each cabin has its own control panel making it independent
- 1 compressor in crew cabin, 120000 total BTU and inverter
- Fan coils distribution:
- - Owner's cabin and head: 18400 BTU
- - Port side guest cabin and head: 9200 BTU
- - Crew room: 9200 BTU

Equipment

- 2 telescopic boat hooks
- 24 m fender lines
- 8 fenders
- 1 Owner's Manual
- 6 anchor lines
- 1 anchor chain stopper
- 8 black fender covers

The company is not liable for validity of the information provided by the yacht-owner (images, specification of the yacht, list of equipment installed, its operability, engine hours, legal aspects). Actual engine hours are indicated at the moment of initial information placement and gets further periodically updated. Detailed information and characteristics will be provided on buyer's request and indicated in the contract.

Azimut S7

YEAR
2023

LENGTH
21.37 m

VAT EXCLUDED
By request

- 1 AZIMUT document holder
- 1 AZIMUT warranty service booklet
- 1 set of china plates
- 1 set of stainless steel cooking pans
- 1 clock with glossy brass case
- 4 floating key-rings
- 1 remote control holder(with logo)
- 1 pin wrench for locking stainless steel pins
- 1 wooden model of the boat
- 1 stainless steel cutlery service
- 1 set of glasses
- 5 sets of towels (with logo)
- 1 barometer with glossy brass case
- 1 bag (with logo)for strong the manuals
- 1 routine maintenance kit for steel

The company is not liable for validity of the information provided by the yacht-owner (images, specification of the yacht, list of equipment installed, its operability, engine hours, legal aspects). Actual engine hours are indicated at the moment of initial information placement and gets further periodically updated. Detailed information and characteristics will be provided on buyer's request and indicated in the contract.